



---

**Public Notice**  
**The Purchasing of Spare Parts for Hydraulic System Stacker Reclaimer (PARKER)**

**1. Scope of Supply**

Purchasing of Spare Parts for Hydraulic System Stacker Reclaimer (PARKER)

**2. Bidding Type**

- Domestic open bidding to select the lowest priced suppliers and evaluated by total price
- The quotation shall be submitted in one sealed envelope containing both the priced and unpriced proposals, addressed to Procurement Team, F&A Division PT. KPJB

**3. Requirement for Qualification of Bidder**

It is mentioned in document of INVITATION TO BID, Bidding Schedule of The Purchasing of Spare Parts for Hydraulic System Stacker Reclaimer (PARKER), Attachment 5.

**4. Aanwijzing will be held on 10.00 WIB, 9 December 2025 (via Zoom Application)**

Topic: RFQ K18940 of The Purchasing of Spare Parts for Hydraulic System Stacker Reclaimer (PARKER)

Time: Dec 9, 2025 10:00 AM Jakarta

Join Zoom Meeting

<https://us06web.zoom.us/j/81668401545?pwd=KGehtMkRryDpPgDJ4NlqQ4OYui9ya.1>

Meeting ID: 816 6840 1545

Passcode: 949813

**5. Bid Closing date and Time on 11.00 WIB, 18 December 2025**

**6. Invitation to Bid (ITB) and Additional Information**

- Invitation to Bid (ITB) document copy or soft file is available in website PT. KPJB ([www.kpjb.co.id](http://www.kpjb.co.id)); or
- Email : [procurement34@kpjb.co.id](mailto:procurement34@kpjb.co.id)

**7. Bid submission**

To : Procurement Team

**Finance & Administration Division (K18940)**

**PT. Komipo Pembangkitan Jawa Bali (KPJB)**

PLTU Tanjung Jati B Unit 3 & 4,

Desa Tubanan, Kecamatan Kembang,

Kabupaten Jepara, Jawa Tengah, Indonesia 59453

Tel : 0291-4270493, Fax : 0291-4270601



**8. Procedure for Submission Bid Document**

- The bidding document shall be submitted in a sealed envelope by registered mail or direct submission after KPJB security's check not later than the bid closing date and time.
- Document title shall be marked in the envelope as "The Purchasing of Spare Parts for Hydraulic System Stacker Reclaimer (PARKER)"



[Home](#)

[Products](#) ▾

[Help & Support](#)

[Home](#) / [Products](#) / [Valves](#) / [Check Valves](#) / [Colorflow Check Valve – C Series](#) / [9C1600S65](#)

## Colorflow Check Valve – C Series

Part #: 9C1600S65



Parkers Colorflow C series hydraulic check valves offer superior construction and versatility with a variety of materials, sizes and ports. These one-way check valves are used in hydraulic and pneumatic applications in the mobile & industrial markets.

[View Series Page](#) ☰ [View Catalog\(s\)](#) 📄 [Share / Email](#) ➦ [Print](#) 🖨

### Technical Specifications

Maximum Operating Pressure:	5000	Cracking Pressure:	65 psi
Configuration:	In-line	Body Material:	Steel
Function:	Check	Flow Direction:	Free Flow in one direction shut-off in reverse
Connection Type:	BSPP	Seal Material:	Nitrile
Media:	Hydraulic Oil	Connection Size:	1"
Flow Direction:	Free Flow in one Direction	Maximum Flow Rate:	151 L/min
Maximum Operating Temperature:	250	Maximum Operating Pressure:	3000 psi
Minimum Operating Temperature:	-40	Maximum Operating Temperature:	400 °F, 205 °C
Mounting Type:	In-line	Minimum Operating Temperature:	-40 °F, -40 °C
Actuation Type:	Mechanical	Mounting Type:	Inline
Flow Rate:	40 g/min, n/a	Brand:	Colorflow
Connection Size:	1 inch	Media:	Hydraulic
Configuration:	Inline	Body Material:	Steel
Actuation Type:	Mechanical	Cracking Pressure (psi):	65
Connection Type:	BSPP	Maximum Flow Rate (gpm):	40
Function:	Mechanical	Seal Material:	N/A

⚠ California Residents: Prop-65 Warning

⚠ Safety Warning

### Item Information



[Home](#)

[Related Documents](#)



[Products](#)

[Help & Support](#)

[Industries](#)

[Where To Buy](#)



[Colorflow In-Line General Purpose Needle Valve – N Series](#)

[In-line Flow Control Valve – F Series](#)

[Colorflow In-Line Precision Needle Valve – MV Series](#)

[Colorflow In-Line Compensated Valve](#)



**Americas**

USA, Canada, Mexico

[cparker@support.parker.com](mailto:cparker@support.parker.com)  
[1-800-272-7537](tel:1-800-272-7537)

**Europe**

[00800 27 27 5374](tel:00800-27-27-5374)

**AOG (Aircraft on Ground)**

[1-949-851-4357](tel:1-949-851-4357)

[+ Company Information](#)

[+ Global Operations](#)

[+ Help & Support](#)

[+ Follow Us :](#)

© PARKER HANNIFIN CORP 2024

**ENGINEERING YOUR SUCCESS.**

[SITE MAP](#) [SAFETY](#) [PRIVACY POLICIES](#) [TERMS AND CONDITIONS](#)



[Home](#)

[Products](#) ▾

[Help & Support](#)

[Industries](#)

[Where To Buy](#)

---



[Home](#)

[Products](#) ▾

[Help & Support](#)

[Industries](#) / [Products](#) / [Valves](#) / [Ball Valves](#) / [Ball Valve Series BVGL & BVGLOCK - Long Female Threads](#) / [BVGT4-1L](#)

[Where To Buy](#) **Ball Valve Series BVGL & BVGLOCK - Long Female Threads**

Part #: BVGT4-1L



BVGL & BVGLOCK series ball valves feature a nickel plated brass body and a chrome plated brass ball and are manufactured with long female threads.

[View Series Page](#) [Share / Email](#) [Print](#)

### Technical Specifications

Handle:	Compact	Product Style:	Female to Female
Thread Size (Inch):	1	Actuation Type:	Manual
Minimum Operating Temperature:	-40 °F, -40 °C	Configuration:	Female to Female
Maximum Operating Temperature:	338 °F, 170 °C	Connection Size:	Varies
Locking Mechanism:	Non-Locking	Function:	Ball Valve
Maximum Operating Pressure:	40 bar, 580 psi	Handle Type:	Compact
Connection Type:	BSPP	Maximum Flow Rate:	n/a
Body Material:	Nickel-Plated Brass	Mounting Type:	Inline
Ball Material:	Chrome-Plated Brass	Operation Type:	On/Off
Seat Material:	PTFE	Orifice Size:	25 mm
Shape:	Inline	Product Type:	Ball Valve
Vented:	No	Seal Material:	PTFE
Thread Size:	BSPP	Flow Diameter (mm):	25

[Safety Warning](#)

### Item Information +

### CAD Drawings + Files +

### Related Documents +



**Productos**

USA, Canada, Mexico  
Help & Support

[cparker@support.parker.com](mailto:cparker@support.parker.com)  
Industries  
1-800-272-7537

**WHERE To Buy**

00800 27 27 5374

AOG (Aircraft on Ground)

1-949-851-4357

+ Company Information

+ Global Operations

+ Help & Support

+ Follow Us:

© PARKER HANNIFIN CORP 2024

**ENGINEERING YOUR SUCCESS.**

[SITE MAP](#) [SAFETY](#) [PRIVACY POLICIES](#) [TERMS AND CONDITIONS](#)



[Home](#)

[Products](#) ▾

[Help & Support](#)

[Industries](#)

[Where To Buy](#)

---



[Home](#)

[Products](#) ▾

[Help & Support](#)

[Home](#) / [Products](#) / [Valves](#) / [Ball Valves](#) / [Ball Valve Series BVGL & BVGLOCK - Long Female Threads](#) / [BVGT4-3/4L](#)

## Ball Valve Series BVGL & BVGLOCK - Long Female Threads

Part #: BVGT4-3/4L



BVGL & BVGLOCK series ball valves feature a nickel plated brass body and a chrome plated brass ball and are manufactured with long female threads.

[View Series Page](#) ☰ [Share / Email](#) ↗ [Print](#) 🖨

### Technical Specifications

Thread Size (Inch):	3/4	Product Style:	Female to Female
Handle:	Compact	Actuation Type:	Manual
Minimum Operating Temperature:	-40 °F, -40 °C	Configuration:	Female to Female
Maximum Operating Temperature:	338 °F, 170 °C	Connection Size:	Varies
Maximum Operating Pressure:	40 bar, 580 psi	Function:	Ball Valve
Locking Mechanism:	Non-Locking	Handle Type:	Compact
Connection Type:	BSPP	Maximum Flow Rate:	n/a
Body Material:	Nickel-Plated Brass	Mounting Type:	Inline
Ball Material:	Chrome-Plated Brass	Flow Diameter (mm):	20
Seat Material:	PTFE	Operation Type:	On/Off
Shape:	Inline	Orifice Size:	20 mm
Vented:	No	Product Type:	Ball Valve
Thread Size:	BSPP	Seal Material:	PTFE

[Safety Warning](#)

### Item Information +

### CAD Drawings + Files +

### Related Documents +



**Americas**

USA, Canada, Mexico  
Help & Support

[cparker@support.parker.com](mailto:cparker@support.parker.com)  
[1-800-777-7537](tel:18007777537)

**Europe**  
Where To Buy

[00800 27 27 5374](tel:0080027275374)

AOG (Aircraft on Ground)

[1-949-851-4357](tel:19498514357)

+ [Company Information](#)

+ [Global Operations](#)

+ [Help & Support](#)

+ [Follow Us :](#)

© PARKER HANNIFIN CORP 2024

**ENGINEERING YOUR SUCCESS.**

[SITE MAP](#) [SAFETY](#) [PRIVACY POLICIES](#) [TERMS AND CONDITIONS](#)



[Home](#)

[Products](#) ▾

[Help & Support](#)

[Industries](#)

[Where To Buy](#)

---

Note: Data may vary by configuration. See CONFIGURATION section.

Cavity	<a href="#">T-2A</a>
Series	<a href="#">2</a>
Capacity	20 gpm
Pilot Ratio	3:1
Maximum Recommended Load Pressure at Maximum Setting	3075 psi
Maximum Setting	4000 psi
Factory Pressure Settings Established at	2 in <sup>3</sup> /min.
Maximum Valve Leakage at Reseat	5 drops/min.
Adjustment - No. of CCW Turns from Min. to Max. Setting	3.75
Operating Characteristic	Semi-restrictive
Reseat	>85% of setting
Valve Hex Size	1 1/8 in.
Valve Installation Torque	45 - 50 lbf ft
Adjustment Screw Internal Hex Size	5/32 in.
Locknut Hex Size	9/16 in.
Locknut Torque	80 - 90 lbf in.
Model Weight	0.63 lb.
Seal kit - Cartridge	Buna: <a href="#">990202007</a>
Seal kit - Cartridge	Polyurethane: <a href="#">990002002</a>
Seal kit - Cartridge	Viton: <a href="#">990202006</a>


[Home](#)
[Products](#)
[Help & Support](#)
[Industries](#)
[Where To Buy](#)
[Home](#) / [Products](#) / [Valves](#) / [Directional Control Valves](#) / [Directional Control Valve - Series D1VW / D1VW\\*EE / D1VW002ENJW](#)

## Directional Control Valve - Series D1VW / D1VW\*EE

Part #: D1VW002ENJW



The D1VW in NG06 (CETOP 03) is an on/off valve which provides high functional limits in combination with a very low, energy-saving pressure drop. It is optionally available with soft shift option or as explosion proof version according to ATEX and IECEx.

[View Series Page](#)
[View Catalog\(s\)](#)
[Share / Email](#)
[Print](#)

### Technical Specifications

Marking:	Standard	Weight:	1.5 kg
Seal Material:	NBR	Maximum Operating Pressure:	350 bar
Operation Type:	Direct	Maximum Operating Temperature:	60 °C
Spool Position:	2 positions, spring offset in position 0, operated in position a	Minimum Operating Temperature:	-25 °C
Input Voltage:	24 VDC	Seal Material:	NBR
Maximum Flow Rate:	80 L/min	For Fluid Type:	Hydraulic Oil According to DIN 51524
Connection Type:	Connector as per EN 175301-803	Function:	3-Way
Solenoid Option:	Standard	Port Connection:	NG06 / CETOP 03
Spool Code:	002	Mounting Position:	Unrestricted, Preferably Horizontal
Mounting Type:	Subplate	Body Material:	Cast Iron
Orifice Size:	na		
Actuation Type:	Solenoid		
Product Series:	Directional Control Valve		

Safety Warning

### Item Information

### CAD Drawings + Files

## Related Documents

## Related Products



Directional Control Valve (8 Watt) - Series D1VW

Directional Control Valve with Inductive Position Control - Series D1VW

Directional Control Valve - Series D1MW

Directional Control Valve - Series D1VW



### Americas

USA, Canada, Mexico

[cparker@support.parker.com](mailto:cparker@support.parker.com)  
[1-800-272-7537](tel:1-800-272-7537)

### Europe

[00800 27 27 5374](tel:00800-27-27-5374)

AOG (Aircraft on Ground)

[1-949-851-4357](tel:1-949-851-4357)

[Company Information](#)

[Global Operations](#)

[Help & Support](#)

[Follow Us :](#)

© PARKER HANNIFIN CORP 2024

ENGINEERING YOUR SUCCESS.

[SITE MAP](#) [SAFETY](#) [PRIVACY POLICIES](#) [TERMS AND CONDITIONS](#)





[Home](#)

[Products](#)

[Support](#)

[Home](#) / [Products](#) / [Valves](#) / [Directional Control Valves](#) / [Directional Control Valve - Series D1VW / D1VW\\*EE / D1VW004CNJW](#)

## Directional Control Valve - Series D1VW / D1VW\*EE

[Where to Buy](#)

Part #: D1VW004CNJW



The D1VW in NG06 (CETOP 03) is an on/off valve which provides high functional limits in combination with a very low, energy-saving pressure drop. It is optionally available with soft shift option or as explosion proof version according to ATEX and IECEx.

[View Series Page](#) [View Catalog\(s\)](#) [Share / Email](#) [Print](#)

### Technical Specifications

Marking:	Standard	Weight:	2.1 kg
Seal Material:	NBR	Maximum Operating Pressure:	350 bar
Spool Position:	3 positions, spring offset in position 0, operated in position a or b	Maximum Operating Temperature:	60 °C
Operation Type:	Direct	Minimum Operating Temperature:	-25 °C
Input Voltage:	24 VDC	Seal Material:	NBR
Maximum Flow Rate:	80 L/min	For Fluid Type:	Hydraulic Oil According to DIN 51524
Connection Type:	Connector as per EN 175301-803	Function:	2-Way
Solenoid Option:	Standard	Port Connection:	NG06 / CETOP 03
Spool Code:	004	Mounting Position:	Unrestricted, Preferably Horizontal
Mounting Type:	Subplate	Body Material:	Cast Iron
Orifice Size:	na		
Actuation Type:	Solenoid		
Product Series:	Directional Control Valve		

### Item Information

### CAD Drawings + Files

### Related Documents

### Related Products



[Home](#)

[Products](#)

[Support](#)

[Industries](#)

[Solutions](#) Directional Control Valve (8 Watt) - Series D1VW

Directional Control Valve with Inductive Position Control - Series D1VW

Directional Control Valve - Series D1MW

Directional Control Valve

[Where to Buy](#)



Parker Hannifin Motion & Control (Shanghai) Co., Ltd.

[CHINA.SOCIALTEAM@PARKER.COM](mailto:CHINA.SOCIALTEAM@PARKER.COM)  
[+86-21-28995000](tel:+86-21-28995000)

+ [Company Information](#)

+ [Global Operations](#)

+ [Help & Support](#)

+ [Follow Us :](#)

© PARKER HANNIFIN CORP 2024

ENGINEERING YOUR SUCCESS.

[SITE MAP](#) [SAFETY](#) [PRIVACY POLICIES](#) [TERMS AND CONDITIONS](#)



[Home](#)

[Products](#)

[Support](#)

[Industries](#)

[Solutions](#)

[Where to Buy](#)

---


[Home](#)
[Products](#)
[Support](#)
[Home](#) / [Products](#) / [Fittings and Quick Couplings](#) / [Hydraulic Couplings](#) / [Test Port and Diagnostic Couplings](#) / [Parker SensoControl Test Points](#) / EMA3/1/4EDCF

## Parker SensoControl Test Points

[Where to Buy](#)

Part #: EMA3/1/4EDCF



The role of Parker SensoControl test points is the monitoring and inspection, and also sampling, of high, low and vacuum systems. They are used for venting cylinders and hydraulic installations.

[View Series Page](#) [View Catalog\(s\)](#) [Share / Email](#) [Print](#)

### Technical Specifications

Product Style:	Test point with threaded connection M16x2	Connection Size:	M12x1.5 to M52x2.0, G 1/8 to G 1/2
Product Series:	n/a	Tube Outside Diameter:	6-42
Connection 1 Type:	Male BSP	Maximum Operating Temperature:	250 °C (Steel), 482 °F (Steel), 400 °C (Stainless Steel), 752 °F (Stainless Steel)
Connection Thread Size:	G 1/4	Maximum Operating Pressure:	160 to 400, 2321 to 5802, 16 to 40
Connection 1 Tube Outside Diameter:	n/a	Minimum Operating Temperature:	-40 °F (Steel), -40 °C (Steel), -60 °C (Stainless Steel), -76 °F (Stainless Steel)
Connection 2 Type:	n/a	Application:	Agriculture Equipment, Fuel Transfer, Hydraulics, Manufacturing Equipment, Marine, Material Handling, Mobile Equipment, Automotive Process, Oilfield, Chemical Transfer, Packaging, Transportation, Construction Equipment
Connection 2 Tube Outside Diameter:	n/a	Connection Type:	Bite Type, Soft Seal Bite Type
Materials of Construction:	Steel	Specifications Met:	DIN, ISO 8434
Primary Seal:	ED-Seal	Shape:	Test Point Fitting with Pin-lock, Straight Test Point Fitting with Pin-lock, Test Point Fitting with Pin-lock for Cones, Test Point High Pressure Hose with Pin-lock, Test Point Pressure Gauge Connector with Pin-lock, Test Point with Threaded Connection
Seal Material:	NBR		
Length:	n/a		
Optional Accessories:	n/a		
Connection 1 Size:	Male Metric, Male BSP, Pin-Lok, n/a, 24° Cone End, 24° Cone Swivel Nut Connection, Female BSP		
Connection 2 Size:	n/a, 24° Cone End		

### Item Information



[Home](#)

[Related Documents](#)



[Products](#)



**Parker Hannifin Motion & Control (Shanghai) Co., Ltd.**  
**Solutions**

[CHINA.SOCIALTEAM@PARKER.COM](mailto:CHINA.SOCIALTEAM@PARKER.COM)

[+86 21 2899 5000](tel:+862128995000)

[+ Company Information](#)

[+ Global Operations](#)

[+ Help & Support](#)

[+ Follow Us :](#)

© PARKER HANNIFIN CORP 2024

**ENGINEERING YOUR SUCCESS.**

[SITE MAP](#) [SAFETY](#) [PRIVACY POLICIES](#) [TERMS AND CONDITIONS](#)



[Home](#)

[Products](#)

[Support](#)

[Industries](#)

[Solutions](#)

[Where to Buy](#)

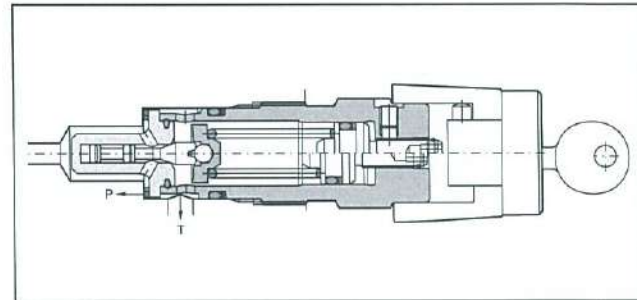
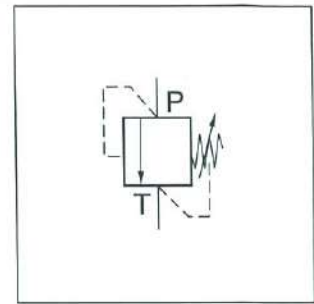
---

The direct operated pressure relief valve series EVSA is a seated type valve for screw-in mounting. It is available in two sizes and three pressure stages.

**Function**

When the pressure in port P exceeds the setting pressure the cone opens to port T and thus limits the pressure in port P to the adjusted level.

The integrated damping spool prevents pressure fluctuations in the transition region. The pressure is set by the adjusting screw, which is locked by the clamping screw. The setting can optionally be secured by a cylinder lock.



**4**

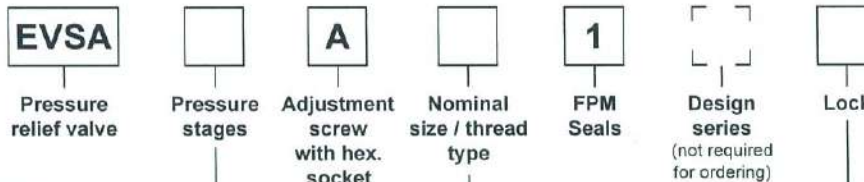
**Features**

- Seated type valve
- Screw-in mounting
- 3 pressure stages
- 2 adjustment modes:
  - screw with hexagon socket
  - cylinder lock

**Note**

The spring must be unloaded when the EVSA is screwed out of the manifold.

**Ordering code**



Code	Pressure stages
<b>064</b>	<b>up to 64 bar</b>
<b>160</b>	<b>up to 160 bar</b>
<b>315</b>	<b>up to 315 bar</b>

Code	Lock
<b>omit</b>	<b>-</b>
<b>Z</b>	<b>Cylinder lock</b>

Code	Nominal size
<b>06</b>	<b>NG06, M28x1.5</b>
<b>10</b>	<b>NG10, M35x1.5</b>

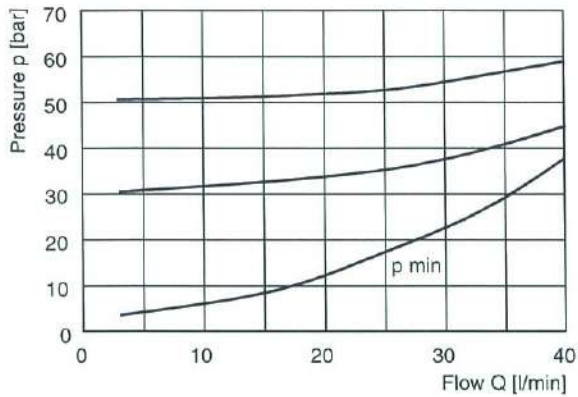
**Bold letters =  
Short-term availability**

**Technical data**

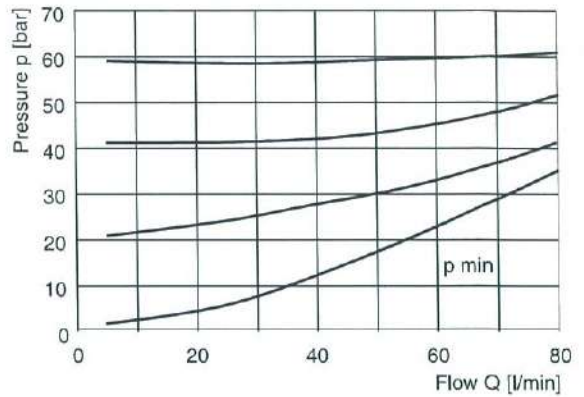
General		Direct operated relief valve, seated type	
Nominal size		NG06	NG10
Interface		Screw-in mounting	
Mounting position		unrestricted	
Ambient temperature	[°C]	-20...+60	
MTTF <sub>D</sub> value	[years]	150	
Weight	[kg]	0.3	0.45
Hydraulics		Port P 315, Port T depressurized	
Max. operating pressure	[bar]	64, 160, 315	
Pressure stages	[bar]	40 (NG06), 80 (NG10)	
Nominal flow	[l/min]	Hydraulic oil according to DIN 51524	
Fluid		-20...+70	
Fluid temperature	[°C]	20...400	
Viscosity permitted	[cSt] / [mm²/s]	30...80	
Viscosity recommended	[cSt] / [mm²/s]	ISO 4406; 18/16/13	
Filtration			

**$\Delta p/Q$  performance curves**

**NG06 pressure stage 64 bar**



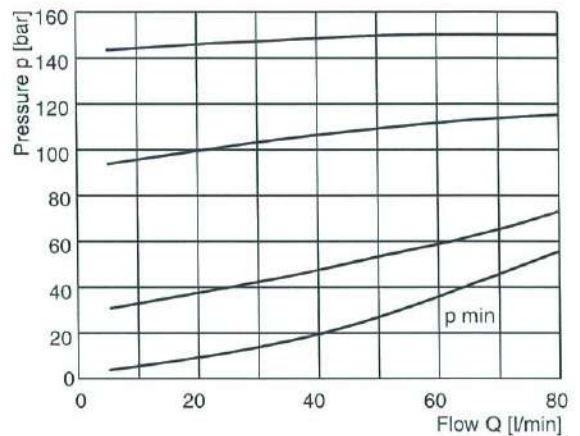
**NG10 pressure stage 64 bar**



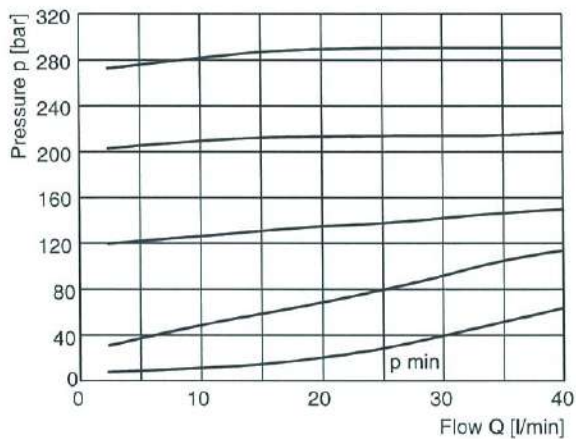
**NG06 pressure stage 160 bar**



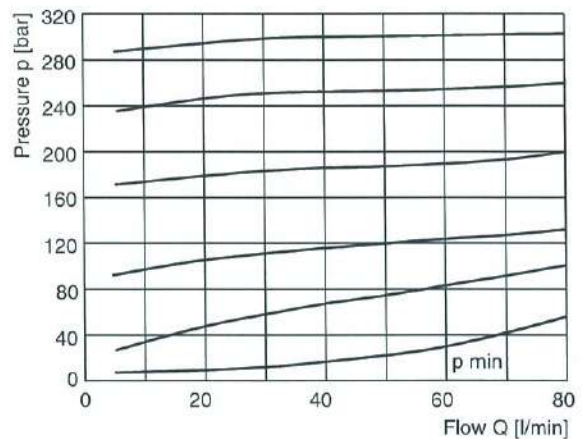
**NG10 pressure stage 160 bar**



**NG06 pressure stage 315 bar**



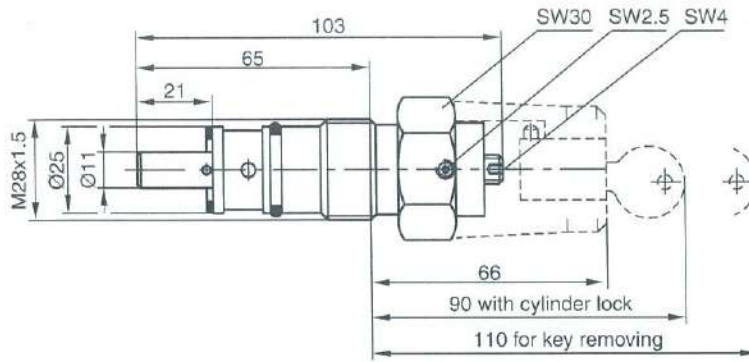
**NG10 pressure stage 315 bar**



All characteristic curves measured with HLP46 at 50 °C.

**4**

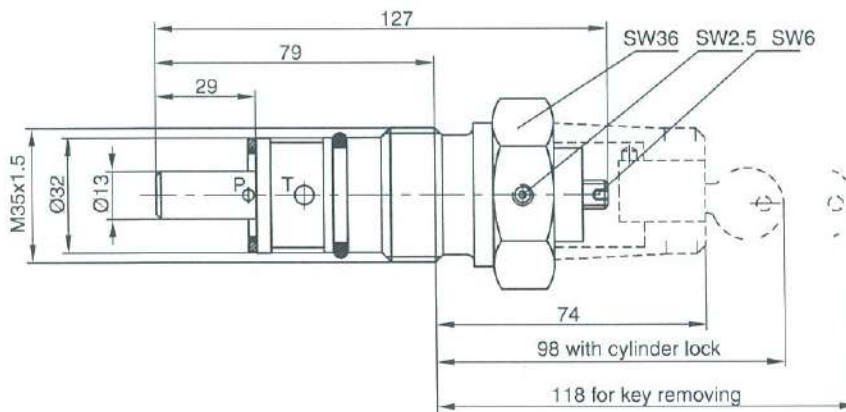
**NG06**



○ Kit  
**SK-EVSA0613**

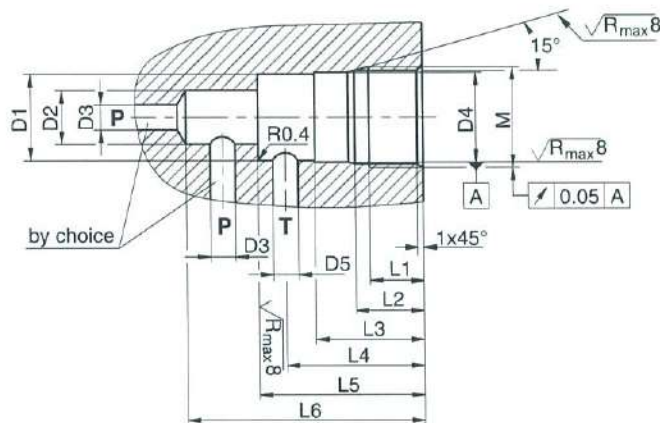
**4**

**NG10**



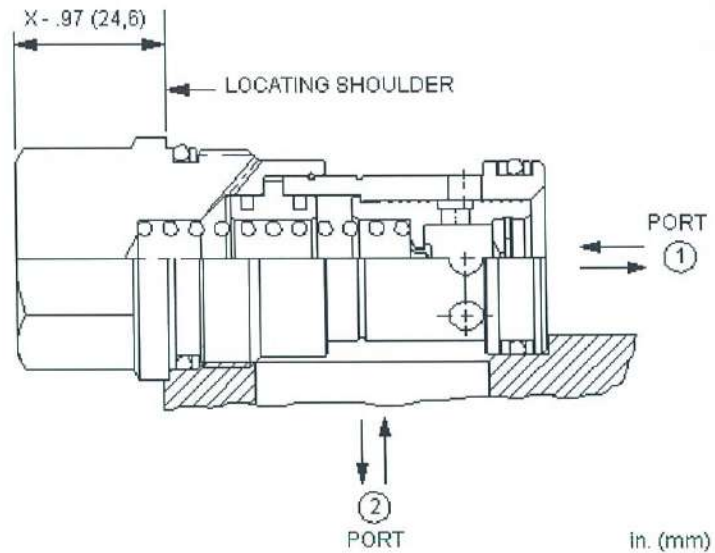
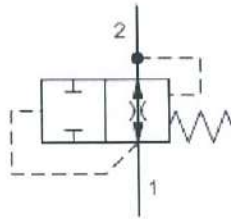
○ Kit  
**SK-EVSA1013**

**Installation dimensions**



Tightening torque [Nm] ±5 %		
Pressure stages	NG06	NG10
064, 160	50	100
315	80	150

Size	M	D <sub>1</sub>	D <sub>2</sub>	D <sub>3</sub>	D <sub>4</sub>	D <sub>5</sub>	L <sub>1</sub>	L <sub>2</sub>	L <sub>3</sub>	L <sub>4</sub>	L <sub>5</sub>	L <sub>6</sub>
NG06	M28 x 1.5	Ø24.8	Ø15	Ø6.8	Ø25 <sup>H9</sup>	Ø6.8	15	19	30	35	45	65
NG10	M35 x 1.5	Ø31.8	Ø18.5	Ø10	Ø32 <sup>H9</sup>	Ø10	18	23	35	41 - 46	52	80



Flow fuse cartridges are used to maintain the position of a hydraulic actuator in the event of a hose or line break. The valve allows flow to and from the actuator but closes instantly if flow from the actuator exceeds the setting of the valve. NOTE: Because the valve responds so rapidly, it is sensitive to any transient flow above the valve setting.

**TECHNICAL DATA**

NOTE: DATA MAY VARY BY CONFIGURATION. SEE CONFIGURATION SECTION.

Cavity	T-16A
Series	3
Capacity	25 gpm
Maximum Operating Pressure	5000 psi
Maximum Valve Leakage at 110 SUS (24 cSt)	4 in <sup>3</sup> /min. @1000 psi
Valve Hex Size	1 1/4 in.
Valve Installation Torque	150 - 160 lbf ft
Seal kit - Cartridge	Buna: 990016007
Seal kit - Cartridge	Polyurethane: 990016002
Seal kit - Cartridge	Viton: 990016006
Model Weight	1.02 lb.

**CONFIGURATION OPTIONS**

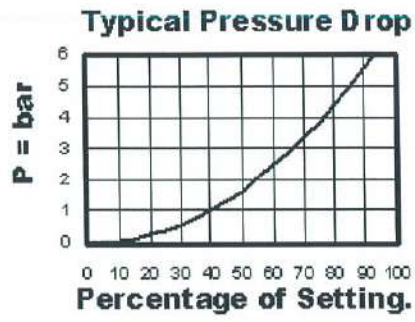
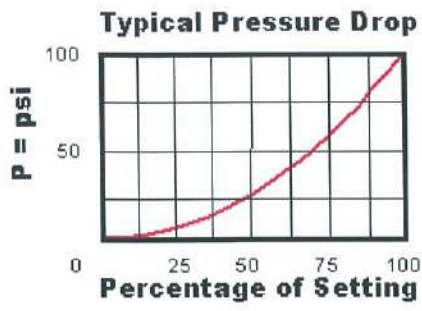
Model Code Example: FQGAXAN

CONTROL	(X) SETTING RANGE	(A) SEAL MATERIAL	(N) MATERIAL/COATING
X Not Adjustable	A Replaceable Orifice 1 - 25 gpm (4 - 95 L/min.)	N Buna-N V Viton	Standard Material/Coating /AP Stainless Steel, Passivated

**TECHNICAL FEATURES**

- Customer must specify a flow rating. Factory set flow ratings are within +/- 10% of the requested setting.
- Valve closes when flow from port 1 to port 2 exceeds the setting of the valve. Valve resets when pressures at port 1 and port 2 are equal.
- Flow setting should be at least 25% above maximum normal system flow. Customer must specify flow when ordering valve.
- These are spool type valves, therefore there is leakage. Some actuator drift may occur.
- Incorporates the Sun floating style construction to minimize the possibility of internal parts binding due to excessive installation torque and/or cavity/cartridge machining variations.

PERFORMANCE CURVES



✓ More than 30.000+ products

🎧 Personal advice!

📞 Questions? Call +31 (0)10 - 479 15 11

✉ Mail: [info@geeve.com](mailto:info@geeve.com)


[Home](#) > [Filtration & Accessories](#) > [Reservoir equipment](#) > [Spin-On Air Breathers](#) > H00834001

# H00834001



Spin-On Air Breather

**Login to see prices and stocks**

 **Add to Quote**

*Ordered before 3pm, shipped today*

Fast order processing

All products in stock

24/7 Support

Questions? Call +31(0)10 - 479 15 11



Customers rate us **8.4/10** on Kiyoh [🔗](#)

We use cookies to make your experience better. To comply with the new e-Privacy directive, we need to ask for ✕

## HYDRAULICS



[More Information](#)

[Downloads](#)

## More information about H00834001

### Partnumber

H00834001

### Weight (KG)

0.960000

### Country of Manufacture

Great Britain

We use cookies to make your experience better. To comply with the new e-Privacy directive, we need to ask for your consent to use cookies.

**Manufacturer**

Parker Hannifin

**Crossreference Parker**

H00834001

**Brand**

Parker

**Working Temperature**

-20°C to+ 90°C

**Flowrate (L/min)**

1700

**Box Qty**

1

**Customs Tariff Number**

84213985

**Sales Unit**

Piece

---

## Downloads of the H00834001



file [Reservoir Accessories](#) (Size: 8.4 MB)

---

Don't want to miss anything? Subscribe to our newsletter and always be the first to know about our new products and exclusive actions.

---

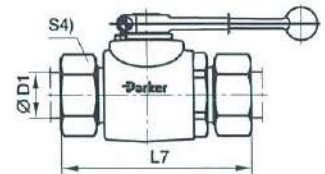
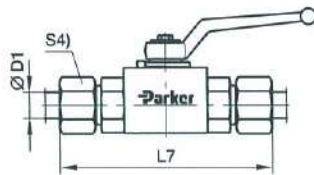
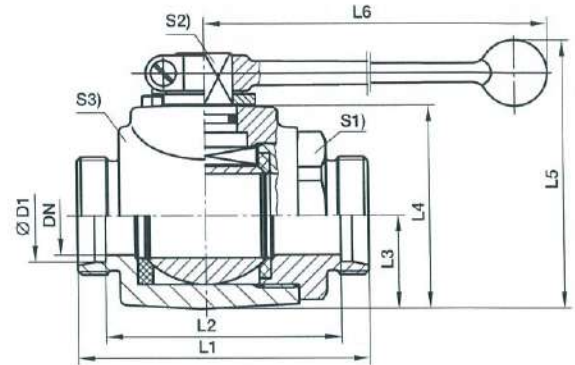
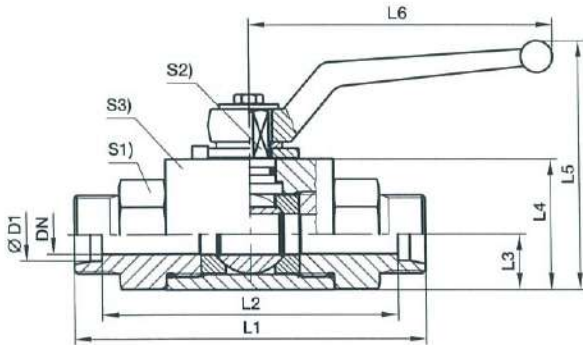
Customers rate us 8.4/10. Based on 41 customer reviews

---

We use cookies to make your experience better. To comply with the new e-Privacy directive, we need to ask for

## KH 2-way ball valve steel

EO 24° cone end / EO 24° cone end



Series	D1 DN	L1	L2	L3	L4	L5	L6	L7	S1	S2	S3	S4	Weight g/1 piece	Order code*	PN (bar) <sup>1)</sup> bronzed		
L <sup>3)</sup>	06	4	67	53	10.0	25	55.0	76	82	19	7	20	14	195	KH06LX	500	
	08	6	67	53	10.0	25	55.0	76	82	19	7	20	17	190	KH08LX	500	
	10	8	75	61	14.5	35	68.0	100	90	24	8	30	19	420	KH10LX	500	
	12	10	75	61	14.5	35	68.0	100	90	24	8	30	22	410	KH12LX	500	
	15	12	83	69	17.0	40	92.0	112	99	30	10	35	27	631	KH15LX	500	
	18	16	82	67	20.0	45	105.0	166	99	36	11	45	32	850	KH18LX	400	
	22	20	99	84	24.0	55	113.0	187	116	41	14	45	36	1210	KH22LX	400	
	28	25	108	93	26.0	60	118.0	187	126	50	14	55	41	1750	KH28LX	400	
	35	25	116	95	26.0	60	118.0	187	138	50	14	55	50	1820	KH35LXDN25	400	
	35	32	121	100	36.5	80	180.5	320	143	60	17	73	50	3158	KH35LX	315	
	42	25	121	99	26.0	60	118.0	187	144	55	14	55	60	1940	KH42LXDN25	400	
	42	40	118	96	42.5	90	190.5	320	141	70	17	85	60	3788	KH42LX	315	
	S <sup>4)</sup>	08	4	73	59	10.0	25	55.0	76	88	19	7	20	19	214	KH08SX	500
		10	6	73	58	10.0	25	55.0	76	90	19	7	20	22	220	KH10SX	500
12		8	77	62	14.5	35	68.0	100	94	24	8	30	24	430	KH12SX	500	
14		10	81	65	14.5	35	68.0	100	100	24	8	30	27	440	KH14SX	500	
16		12	87	70	17.0	40	92.0	112	106	30	10	35	30	649	KH16SX	500	
20		16	90	69	20.0	45	105.0	166	112	36	11	45	36	900	KH20SX	400	
25		20	107	83	24.0	55	113.0	187	131	41	14	45	46	1290	KH25SX	400	
30		25	120	93	26.0	60	118.0	187	146	50	14	55	50	1880	KH30SX	400	
38		25	134	102	26.0	60	118.0	187	163	55	14	55	60	1950	KH38SXDN25	400	
38		32	127	95	36.5	80	180.5	320	156	60	17	73	60	3266	KH38SX	315	

<sup>1)</sup> Pressure shown = item deliverable

<sup>3)</sup> L = light series; <sup>4)</sup> S = heavy series

$$\frac{\text{PN (bar)}}{10} = \text{PN (MPa)}$$

Delivery without nut and ring. Information on ordering complete fittings or alternative sealing materials see page 17.

\*Please add the suffixes below according to the material/surface required.

Order code suffixes			
Material	Suffix surface and material	Example	Standard sealing material (no additional suffix needed)
Steel, bronzed	DIN 50938-FE//A/T4	KH06LX	POM / NBR

### Technical data

---

Connection 2 Tube O.D. (mm)	12
Connection Size	na
Material	Steel DIN 50938-FE//A/T5
Shape	2-way ball valve
Media	Hydraulic Fluids
Optional Accessories	na, Pre-assembled with nut and EO-PSR cutting ring, Pre-assembled with EO-2 functional nut, Pre-assembled with nut and EO-DPR cutting ring
Application	Agriculture Equipment, Automotive Process, Chemical Transfer, Construction Equipment, Fuel transfer, Hydraulic, Manufacturing Equipment, Marine, Material Handling, Mobile Equipment, Oilfield, Packaging, Transportation
Specifications Met	DIN ISO 8434
Diameter Nominal (DN)	10
Connection 1 Tube O.D. (mm)	12
Series	Light
Pre-Installed Optional Accessories	Pre-assembled with nut and EO-PSR cutting ring
Diameter	Nominal: 4.0 to 50 mm
Maximum Operating Pressure	31.5-47.6 MPa, 315-500 bar, 4569-7252 psi
Connection Type	Bite Type, Soft Seal Bite Type

# 63mm Dia. Pressure Gauges

## Specification



**Construction:**

Case: Natural finish stainless steel.  
 Window: Non-splintering clear acrylic glass.  
 Movement: Cu alloy.  
 Dial: White plastic, with pointer stop pin.  
 Pointer: Black plastic.

**Liquid filling:**

Glycerine 99.7%.

**Working pressure:**

Max 75% of the full scale value.

**Process temperature:**

+ 60°C maximum.

**Accuracy:**

1.6% FSD.

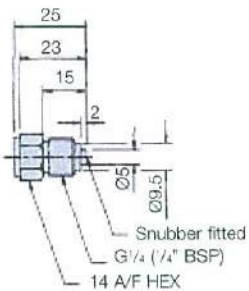
**Wetted parts connector:**

Copper alloy.

**Bourdon tube:**

< 60 bar = Cu alloy, C-type, soft soldered.  
 > 60 bar = Cu alloy, helical type, soft soldered.

### Mounting Stem Detail



Note: It is recommended that all glycerine gauges should be mounted in the vertical position with gauge case relief valve uppermost. Pressure range up to 1000 bar available.

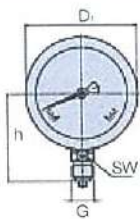
## Ordering Information

### Bottom Connection

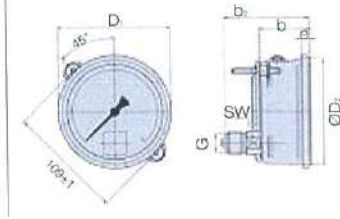
Part number	Supersedes	Pressure range	Connector type
<b>PGB0631010</b>	PGB.0631.010	0-10 bar	G 1/4 Bottom
<b>PGB0631016</b>	PGB.0631.016	0-16 bar	G 1/4 Bottom
<b>PGB0631025</b>	PGB.0631.025	0-25 bar	G 1/4 Bottom
<b>PGB0631040</b>	PGB.0631.040	0-40 bar	G 1/4 Bottom
<b>PGB0631060</b>	PGB.0631.060	0-60 bar	G 1/4 Bottom
<b>PGB0631100</b>	PGB.0631.100	0-100 bar	G 1/4 Bottom
<b>PGB0631160</b>	PGB.0631.160	0-160 bar	G 1/4 Bottom
<b>PGB0631250</b>	PGB.0631.250	0-250 bar	G 1/4 Bottom
<b>PGB0631400</b>	PGB.0631.400	0-400 bar	G 1/4 Bottom
<b>PGB0631600</b>	PGB.0631.600	0-600 bar	G 1/4 Bottom
<b>PGB0631004</b>	PGB.0631.004	0-4 bar	G 1/4 Bottom

## Installation Details

### Bottom Connection



### Panel Mounting (Lower Back)



### Dimensions (mm) Bottom Connection

a	b	D <sub>1</sub>	D <sub>2</sub>	e	G	h	SW	Weight Kg
13	32 ±0.5	68	62	6.5	G 1/4	54 ±1	14	0.21

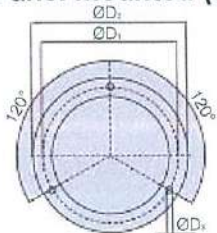
### Dimensions (mm) Panel Mounting (Lower Back)

b	b <sub>1</sub>	D <sub>1</sub>	D <sub>2</sub>	e	G	SW	Weight Kg
32 ±0.5	56 ±1	68	62	6.5	G 1/4	14	0.21

Note 1: Panel cut-out 64.5 ±0.5

Note 2: 13mm on the outside radius required to allow for fixing clamp.

### Panel Mounted (3-hole flange)



Note 1: Gauge dimensions as for panel mounting option above with flange as shown below.

Note 2: Panel cut-out for 3-hole mounting 67±0.3.

### Dimensions (mm)

D <sub>1</sub>	D <sub>2</sub>	D <sub>3</sub>
75	85	3.6

### Panel Mounting

Part number	Supersedes	Pressure range	Connector type
<b>PGC0631010</b>	PGC.0631.010	0-10 bar	G 1/4 Panel
<b>PGC0631016</b>	PGC.0631.016	0-16 bar	G 1/4 Panel
<b>PGC0631025</b>	PGC.0631.025	0-25 bar	G 1/4 Panel
<b>PGC0631040</b>	PGC.0631.040	0-40 bar	G 1/4 Panel
<b>PGC0631060</b>	PGC.0631.060	0-60 bar	G 1/4 Panel
<b>PGC0631100</b>	PGC.0631.100	0-100 bar	G 1/4 Panel
<b>PGC0631160</b>	PGC.0631.160	0-160 bar	G 1/4 Panel
<b>PGC0631250</b>	PGC.0631.250	0-250 bar	G 1/4 Panel
<b>PGC0631400</b>	PGC.0631.400	0-400 bar	G 1/4 Panel
<b>PGC0631004</b>	PGC.0631.004	0-4 bar	G 1/4 Panel
<b>PGC0631600</b>	PGC.0631.600	0-600 bar	G 1/4 Panel

### Panel Mounted (3-hole flange)

Part number	Supersedes	Pressure range	Connector type
<b>PGF0631060</b>	PGF.0631.060	0-60 bar	G 1/4 Panel Flange
<b>PGF0631100</b>	PGF.0631.100	0-100 bar	G 1/4 Panel Flange
<b>PGF0631160</b>	PGF.0631.160	0-160 bar	G 1/4 Panel Flange
<b>PGF0631250</b>	PGF.0631.250	0-250 bar	G 1/4 Panel Flange
<b>PGF0631400</b>	PGF.0631.400	0-400 bar	G 1/4 Panel Flange
<b>PGF0631004</b>	PGF.0631.004	0-4 bar	G 1/4 Panel Flange
<b>PGF0631010</b>	PGF.0631.010	0-10 bar	G 1/4 Panel Flange
<b>PGF0631016</b>	PGF.0631.016	0-16 bar	G 1/4 Panel Flange
<b>PGF0631025</b>	PGF.0631.025	0-25 bar	G 1/4 Panel Flange
<b>PGF0631040</b>	PGF.0631.040	0-40 bar	G 1/4 Panel Flange
<b>PGF0631600</b>	PGF.0631.600	0-600 bar	G 1/4 Panel Flange

Note 1: Part numbers featured with bold highlighted codes will ensure a 'standard' product selection.

Note 2: Alternate displayed part number selection will require you to contact Parker Filtration for availability.

\*Note 3: Any subsequent changes to gauge accuracy will be notified.


[Home](#)
[Products](#)
[Help & Support](#)
[Industries](#)
[Where To Buy](#)
[Home](#) / [Products](#) / [Fittings and Quick Couplings](#) / [Hydraulic Couplings](#) / [Test Port and Diagnostic Couplings](#) / [Parker SensoControl Test Points](#) / [MAVMD1/4MA3CF](#)

## Parker SensoControl Test Points

Part #: MAVMD1/4MA3CF



The role of Parker SensoControl test points is the monitoring and inspection, and also sampling, of high, low and vacuum systems. They are used for venting cylinders and hydraulic installations.

[View Series Page](#)
[View Catalog\(s\)](#)
[Share / Email](#)
[Print](#)

### Technical Specifications

Product Style:	Test point with threaded connection M16x2	Connection Size:	M12x1.5 to M52x2.0, G 1/8 to G 1/2
Product Series:	n/a	Tube Outside Diameter:	6-42
Connection 1 Type:	Female BSP	Maximum Operating Temperature:	250 °C (Steel), 482 °F (Steel), 400 °C (Stainless Steel), 752 °F (Stainless Steel)
Connection Thread Size:	G 1/4	Maximum Operating Pressure:	160 to 400, 2321 to 5802, 16 to 40
Connection 1 Tube Outside Diameter:	n/a	Minimum Operating Temperature:	-40 °F (Steel), -40 °C (Steel), -60 °C (Stainless Steel), -76 °F (Stainless Steel)
Connection 2 Type:	n/a	Application:	Agriculture Equipment, Fuel Transfer, Hydraulics, Manufacturing Equipment, Marine, Material Handling, Mobile Equipment, Automotive Process, Oilfield, Chemical Transfer, Packaging, Transportation, Construction Equipment
Connection 2 Tube Outside Diameter:	n/a	Connection Type:	Bite Type, Soft Seal Bite Type
Materials of Construction:	Steel	Specifications Met:	DIN, ISO 8434
Primary Seal:	Sealing Ring DIN 16258	Shape:	Test Point Fitting with Pin-lock, Straight Test Point Fitting with Pin-lock, Test Point Fitting with Pin-lock for Cones, Test Point High Pressure Hose with Pin-lock, Test Point Pressure Gauge Connector with Pin-lock, Test Point with Threaded Connectio
Seal Material:	NBR		M
Length:	n/a		
Optional Accessories:	n/a		
Connection 1 Size:	Male Metric, Male BSP, Pin-Lok, n/a, 24° Cone End, 24° Cone Swivel Nut Connection, Female BSP		
Connection 2 Size:	n/a, 24° Cone End		

California Residents: Prop-65 Warning

 Safety Warning

## Item Information

## CAD Drawings + Files

## Related Documents

## Related Products



Seamless EO tubes and tube bends

Assembly tools for EO assembly machines

Cutting and bending tools

EO-NIROMONT lubri assembly, flaring ar



### Americas

USA, Canada, Mexico

[cparker@support.parker.com](mailto:cparker@support.parker.com)  
[1-800-272-7537](tel:1-800-272-7537)

### Europe

[00800 27 27 5374](tel:00800-27-27-5374)

AOG (Aircraft on Ground)

[1-949-851-4357](tel:1-949-851-4357)

[Company Information](#)

[Global Operations](#)

[Help & Support](#)

[Follow Us :](#)

© PARKER HANNIFIN CORP 2024

ENGINEERING YOUR SUCCESS.

[SITE MAP](#) [SAFETY](#) [PRIVACY POLICIES](#) [TERMS AND CONDITIONS](#)





[Home](#)

[Products](#) ▾

[Help & Support](#)

[Home](#) / [Products](#) / [Valves](#) / [Valve Terminals](#) / [Controls](#) / [E-Module for Proportional Directional Control Valves - Series PWD00A-400 / PWD00A-400](#)

## E-Module for Proportional Directional Control Valves - Series PWD00A-400

Part #: PWD00A-400



Parker digital amplifier modules series PWD00A-400 combine all necessary functions for the optimal operation of proportional directional control valves without position sensor.

[View Series Page](#) [View Catalog\(s\)](#) [Share / Email](#) [Print](#)

### Technical Specifications

<b>Product Series:</b>	Electronic module	<b>Seal Material:</b>	N/A
<b>Input Voltage:</b>	18 - 30 V DC	<b>For Fluid Type:</b>	N/A
<b>Actuation Type:</b>	N/A	<b>Interface Type:</b>	USB type-B
<b>Mounting Type:</b>	Snap-on mounting	<b>Input Voltage:</b>	18 - 30 VDC
<b>Mounting Position:</b>	Unrestricted	<b>Operating Current:</b>	2.2 A
<b>Body Material:</b>	Polycarbonate	<b>Specifications Met:</b>	IP20 acc. EN 60529; V0 acc. UL 94; EMC EN 50081-2, EN 50082-2
<b>Function:</b>	Operation of proportional DC valves	<b>Electrical Connection:</b>	Screw terminals 0.2 ... 2.5 MM2, disconnectable
<b>Maximum Operating Pressure:</b>	N/A	<b>Cable Type:</b>	1.5 MM2 overall braid shield for supply voltage and solenoids (AWG16); 0.5 MM2 overall braid shield for sensor and signal (AWG20)
<b>Maximum Flow Rate:</b>	N/A	<b>Cable Length:</b>	50 m
<b>Maximum Operating Temperature:</b>	60 °C	<b>Weight:</b>	0.16 kg
<b>Minimum Operating Temperature:</b>	-20 °C		

California Residents: Prop-65 Warning

Safety Warning

### Item Information

### CAD Drawings + Files

### Related Documents



[Home](#)

[Products](#) ▾

[Help & Support](#)

[Industries](#)

[Where To Buy](#)

Direct Operated Proportional  
Directional Control Valve - Series D1FB  
/ D3FB

Pilot Operated Proportional Directional  
Control Valve - Series D31FB / D41FB /  
D91FB / D111FB

Pilot Operated Proportional Reducing  
Valve - Series VMY

E-Module for Proportional  
Control Valves - Series



**Americas**

USA, Canada, Mexico

[cparker@support.parker.com](mailto:cparker@support.parker.com)  
[1-800-272-7537](tel:1-800-272-7537)

**Europe**

[00800 27 27 5374](tel:00800-27-27-5374)

**AOG (Aircraft on Ground)**

[1-949-851-4357](tel:1-949-851-4357)

+ [Company Information](#)

+ [Global Operations](#)

+ [Help & Support](#)

+ [Follow Us :](#)

© PARKER HANNIFIN CORP 2024

ENGINEERING YOUR SUCCESS.

[SITE MAP](#) [SAFETY](#) [PRIVACY POLICIES](#) [TERMS AND CONDITIONS](#)



[Home](#)

[Products](#) ▾

[Help & Support](#)

[Industries](#)

[Where To Buy](#)

---


[Home](#)
[Products](#)
[Help & Support](#)
[Industries](#)
[Where To Buy](#)
[Home](#) / [Products](#) / [Valves](#) / [Cartridge Valves](#) / [Pilot Operated Relief Valves](#) / RAH101S50

## Pilot Operated Relief Valves

Part #: RAH101S50



GLOBAL CORE - Parker's pilot operated relief valves are designed for continuous duty applications featuring great stability with low pressure drop; working with pressures up to 420 bar (6000 psi) and flows up to 400 lpm (106 gpm).

[View Series Page](#)
[View Catalog\(s\)](#)
[Share / Email](#)
[Print](#)

### Technical Specifications

Division:	Hydraulic Systems Division	Configuration:	Pressure Relief
Flow Rate:	30 Gal/min, 113 L/min	Leak Rate:	5 per @ 100 psi (6.8 bar) setting cm <sup>3</sup> /min
Flow Rate:	30 GAL/MIN, 113 L/MIN	Mounting Type:	Screw in cartridge valve
Maximum Inlet Pressure Rating:	5000 PSI, 350 BAR	Cavity Size:	C10-2
Maximum Inlet Pressure Rating:	5000 psi, 350 bar	Function:	Pilot Operated
Pressure Control Range:	200-5000 PSI, 13.8-350 BAR	Operation Type:	Automatic
Adjustment Mechanism:	Screw	For Fluid Type:	Mineral-based or synthetic hydraulic fluids
Pressure Control Range:	200-5000 psi, 13.8-350 bar	Maximum Kinematic Viscosity:	45-2000 SSU (6 to 420 cSt)
Seal Material:	D-Ring (Standard)	Filter Efficiency Rating:	ISO 4406 18/16/13, SAE Class 4
Adjustment Mechanism:	Screw	Valve Material:	All parts steel. All operating parts hardened steel
Seal Material:	D-Ring (Standard)	Installation Torque:	51-55 lb-ft, 69-75 Nm
Maximum Flow Rate:	30 Gal/min, 113 L/min	Operating Temperature:	-35 to +200 °F, -37 to +93 °C
Maximum Operating Pressure:	5000 psi, 350 bar	Maximum Operating Temperature:	+200 °F, +93 °C
Maximum Tank Pressure:	5000 psi, 350 bar	Minimum Operating Temperature:	-35 °F, -37 °C
Standard Setting Pressure:	2500 psi, 172.4 bar	Weight:	0.5 lb, 0.23 kg
Maximum Pressure Setting:	5000 psi, 350 bar	Body Material:	N/A
Pressure Control Sensitivity:	1910 per turn psi, 131.7 per turn bar		
Reseat Pressure:	90% of pressure setting		
Actuation Type:	Pressure Sensing		

California Residents: Prop-65 Warning

Safety Warning

## Item Information

### CAD Drawings + Files

### Related Documents

### Related Products

Pilot Operated Relief Valve with Free Reverse Check

Pressure Relieving Proportional Valve

Cartpak Bodies

Standard I



#### Americas

USA, Canada, Mexico

[cparker@support.parker.com](mailto:cparker@support.parker.com)

[1-800-272-7537](tel:1-800-272-7537)

#### Europe

[00800 27 27 5374](tel:00800-27-27-5374)

AOG (Aircraft on Ground)

[1-949-851-4357](tel:1-949-851-4357)

[Company Information](#)

[Global Operations](#)

[Help & Support](#)

[Follow Us :](#)

© PARKER HANNIFIN CORP 2024

ENGINEERING YOUR SUCCESS.

[SITE MAP](#) [SAFETY](#) [PRIVACY POLICIES](#) [TERMS AND CONDITIONS](#)




[Home](#)
[Products](#)
[Help & Support](#)
[Industries](#) / [Products](#) / [Valves](#) / [Cartridge Valves](#) / [Direct Acting Relief Valves](#) / RDH082S50

## Where To Buy

# Direct Acting Relief Valves

Part #: RDH082S50



GLOBAL CORE - Parker's direct acting relief valves are available in several cavity sizes and are designed for continuous duty applications with pressures up to 420 bar (6000 psi) and flows up to 200 lpm (53 gpm).

[View Series Page](#)
[View Catalog\(s\)](#)
[Share / Email](#)
[Print](#)

## Technical Specifications

<b>Division:</b>	Hydraulic Systems Division	<b>Actuation Type:</b>	Pressure Sensing
<b>Flow Rate:</b>	8 Gal/min, 30 L/min	<b>Configuration:</b>	Pressure Relief
<b>Flow Rate:</b>	8 GAL/MIN, 30 L/MIN	<b>Leak Rate:</b>	5 @ 75% Crack Pressure drops/min, 0.33 @ 75% Crack Pressure cm <sup>3</sup> /min
<b>Maximum Inlet Pressure Rating:</b>	5500 PSI, 380 BAR	<b>Mounting Type:</b>	Screw in cartridge valve
<b>Maximum Inlet Pressure Rating:</b>	5500 psi, 380 bar	<b>Cavity Size:</b>	C08-2
<b>Pressure Control Range:</b>	500-5000 PSI, 34.5-350 BAR	<b>Function:</b>	Direct Acting
<b>Adjustment Mechanism:</b>	Screw	<b>Operation Type:</b>	Automatic
<b>Seal Material:</b>	D-Ring (Standard)	<b>For Fluid Type:</b>	Mineral-based or synthetic hydraulic fluids
<b>Pressure Control Range:</b>	500-5000 psi, 34.5-350 bar	<b>Maximum Kinematic Viscosity:</b>	45-2000 SSU (6 to 420 cSt)
<b>Adjustment Mechanism:</b>	Screw	<b>Filter Efficiency Rating:</b>	ISO 4406 18/16/13, SAE Class 4
<b>Seal Material:</b>	D-Ring (Standard)	<b>Valve Material:</b>	All parts steel. All operating parts hardened steel
<b>Maximum Flow Rate:</b>	8 Gal/min, 30 L/min	<b>Installation Torque:</b>	32-36 lb-ft, 43-49 Nm
<b>Maximum Operating Pressure:</b>	5500 psi, 380 bar	<b>Operating Temperature:</b>	-35 to +200 °F, -37 to +93 °C
<b>Maximum Tank Pressure:</b>	5000 psi, 350 bar	<b>Maximum Operating Temperature:</b>	+200 °F, +93 °C
<b>Standard Setting Pressure:</b>	2500 psi, 172.4 bar	<b>Minimum Operating Temperature:</b>	-35 °F, -37 °C
<b>Maximum Pressure Setting:</b>	5000 psi, 350 bar	<b>Weight:</b>	0.4 lb, 0.18 kg
<b>Pressure Control Sensitivity:</b>	787 per turn psi, 54 per turn bar	<b>Wire Mesh Screen Included:</b>	N/A
<b>Reseat Pressure:</b>	85% of pressure setting	<b>Body Material:</b>	N/A

[Safety Warning](#)

## Item Information



[Home](#)

[Related Documents](#)



[Help & Support](#)

[Related Products](#)

[Industries](#)

[Where To Buy](#)

[Direct Acting Differential Area Relief Valves](#)

[Direct Acting Cross-Over Relief Valves](#)

[Cartpak Bodies](#)

[Standard I](#)



**Americas**

USA, Canada, Mexico

[cparker@support.parker.com](mailto:cparker@support.parker.com)  
[1-800-272-7537](tel:1-800-272-7537)

**Europe**

[00800 27 27 5374](tel:00800-27-27-5374)

**AOG (Aircraft on Ground)**

[1-949-851-4357](tel:1-949-851-4357)

+ [Company Information](#)

+ [Global Operations](#)

+ [Help & Support](#)

+ [Follow Us :](#)

© PARKER HANNIFIN CORP 2024

**ENGINEERING YOUR SUCCESS.**

[SITE MAP](#) [SAFETY](#) [PRIVACY POLICIES](#) [TERMS AND CONDITIONS](#)



[Home](#)

[Products](#) ▾

[Help & Support](#)

[Industries](#)

[Where To Buy](#)

---



[Home](#)

[Products](#) ▾

[Help & Support](#)

[Home](#) / [Products](#) / [Valves](#) / [Hydraulic Valves](#) / [Direct Operated Pressure Relief Valve - Series RDM](#) / [RDM2PT21SVG](#)

## Direct Operated Pressure Relief Valve - Series RDM

Part #: RDM2PT21SVG



Pressure relief valves series RDM are direct operated piston type valves with low hysteresis. They can be used as P-T relief or as T-T controlled counter balance valve.

[View Series Page](#) ☰ [View Catalog\(s\)](#) 📄 [Share / Email](#) ➦ [Print](#) 🖨

### Technical Specifications

Adjustment Mechanism:	Hexagon socket	Body Material:	Steel
Seal Material:	FPM	For Fluid Type:	Hydraulic oil
Mounting Type:	Sandwich plate	Pressure Relief Valve:	P to T
Operation Type:	Direct	Pressure Control Range:	3 to 210 bar
Actuation Type:	Manually	Port Connection:	NG06
Gauge Port:	G1/4	Gauge Port Size:	G 1/4
Product Series:	Pressure valve	Adjustment Mechanism:	Hexagon socket
Weight:	1.3 kg	Pressure Relief Valve Type:	Direct operated
Maximum Flow Rate:	40 L/min	Function:	Pressure relieved from P to T
Maximum Operating Pressure:	350/50 bar	Pressure Range (bar):	3-210
Maximum Operating Temperature:	60 °C	Nominal Size:	NG06 / CETOP 03
Minimum Operating Temperature:	-20 °C		

⚠ Safety Warning

### Item Information

### CAD Drawings + Files

### Related Documents

### Related Products



[Home](#)

[Products](#) ▾

[Help & Support](#)

[Direct Operated Pressure Relief Valve - Series RM](#)

[Pilot Operated Pressure Relief Valve - Series ZDV](#)

[2-Way Slip-In Cartridge Valve - Series ZUDB](#)

[2-Way Slip-In Cartridge Valve - Series RPD](#)

[Where To Buy](#)



**Americas**

USA, Canada, Mexico

[cparker@support.parker.com](mailto:cparker@support.parker.com)  
[1-800-272-7537](tel:1-800-272-7537)

**Europe**

[00800 27 27 5374](tel:00800-27-27-5374)

**AOG (Aircraft on Ground)**

[1-949-851-4357](tel:1-949-851-4357)

+ [Company Information](#)

+ [Global Operations](#)

+ [Help & Support](#)

+ [Follow Us :](#)

© PARKER HANNIFIN CORP 2024

**ENGINEERING YOUR SUCCESS.**

[SITE MAP](#) [SAFETY](#) [PRIVACY POLICIES](#) [TERMS AND CONDITIONS](#)



[Home](#)

[Products](#) ▾

[Help & Support](#)

[Industries](#)

[Where To Buy](#)

---


[Home](#)
[Products](#)
[Help & Support](#)
[Industries](#)
[Where To Buy](#)
[Home](#) / [Products](#) / [Valves](#) / [Check Valves](#) / [Ermeto DIN Non return valves](#) / [RHZ12LREDOMDCF](#)

## Ermeto DIN Non return valves

Part #: RHZ12LREDOMDCF



+3



Parker non-return valves with nominal pressure ratings up to PN 420 bar offer a wide range of types, making them very flexible.

[View Series Page](#)
[Share / Email](#)
[Print](#)

### Technical Specifications

Connection 3 Size:	n/a	Seal Material:	NBR
Connection 2 Type:	EO 24° cone end	Connection 3 Type:	n/a
Connection 1 Type:	Male metric thread - ED-seal (ISO 9974)	Product Type:	Non return valve for 1 tube
Maximum Operating Temperature:	+120 °C	Product Series:	Light
Maximum Flow Rate:	n/a	Nominal Inside Diameter:	9.5 mm
Configuration:	n/a	Connection 1 Type:	24° Cone end
Minimum Operating Temperature:	-40 °C	Connection 1 Size:	G 3/8 A
Mounting Type:	Screw	Connection 1 Tube Outside Diameter:	12 mm
Actuation Type:	Mechanical	Connection 2 Type:	Male BSPP thread - ED-seal (ISO 1179)
Maximum Operating Pressure:	400 bar	Connection 2 Size:	n/a
Connection 2 Size:	12 mm	Connection 2 Tube Outside Diameter:	n/a
Connection 1 Size:	G 3/8 A inch	Flow Direction:	Tube to Port
Cracking Pressure:	1 bar	Seal Material:	NBR
Body Material:	Steel	Materials of Construction:	Steel
Flow Direction:	Tube to Port	Optional Accessories:	n/a

California Residents: Prop-65 Warning

Safety Warning

### Item Information

## CAD Drawings + Files

## Related Products

Cutting and bending tools

Seamless EO tubes and tube bends

Assembly tools for EO assembly machines

EO-NIROMONT lube assembly, flaring ar



### Americas

USA, Canada, Mexico

[cparker@support.parker.com](mailto:cparker@support.parker.com)  
[1-800-272-7537](tel:1-800-272-7537)

### Europe

[00800 27 27 5374](tel:0080027275374)  
AOG (Aircraft on Ground)  
[1-949-851-4357](tel:1-949-851-4357)

[Company Information](#)

[Global Operations](#)

[Help & Support](#)

[Follow Us :](#)

© PARKER HANNIFIN CORP 2024

ENGINEERING YOUR SUCCESS.

[SITE MAP](#) [SAFETY](#) [PRIVACY POLICIES](#) [TERMS AND CONDITIONS](#)





[Home](#)

[Products](#)

[Support](#)

[Industries](#) / [Products](#) / [Valves](#) / [Check Valves](#) / [Ermeto DIN Non return valves](#) / [RHZ25SREDOMDCF](#)

## Solutions **Ermeto DIN Non return valves**

[Where to Buy](#)

Part #: RHZ25SREDOMDCF



+3



Parker non-return valves with nominal pressure ratings up to PN 420 bar offer a wide range of types, making them very flexible.

[View Series Page](#) [Share / Email](#) [Print](#)

### Technical Specifications

Connection 3 Size:	n/a	Seal Material:	NBR
Connection 2 Type:	EO 24° cone end	Connection 3 Type:	n/a
Connection 1 Type:	Male metric thread - ED-seal (ISO 9974)	Product Type:	Non return valve for 1 tube
Maximum Operating Temperature:	+120 °C	Product Series:	Heavy
Maximum Flow Rate:	n/a	Nominal Inside Diameter:	19 mm
Configuration:	n/a	Connection 1 Type:	24° Cone end
Minimum Operating Temperature:	-40 °C	Connection 1 Size:	G 1 A
Mounting Type:	Screw	Connection 1 Tube Outside Diameter:	25 mm
Actuation Type:	Mechanical	Connection 2 Type:	Male BSPP thread - ED-seal (ISO 1179)
Maximum Operating Pressure:	420 bar	Connection 2 Size:	n/a
Connection 2 Size:	25 mm	Connection 2 Tube Outside Diameter:	n/a
Connection 1 Size:	G 1 A inch	Flow Direction:	Tube to Port
Cracking Pressure:	1 bar	Seal Material:	NBR
Body Material:	Steel	Materials of Construction:	Steel
Flow Direction:	Tube to Port	Optional Accessories:	n/a

### Item Information

### CAD Drawings + Files

### Related Documents





Parker Hannifin Motion & Control (Shanghai) Co., Ltd.

CHINA SOCIALTEAM@PARKER.COM  
+86-21-28995000

**Industries**

+ Company Information  
Solutions

+ Global Operations  
Where to Buy

+ Help & Support

+ Follow Us :

© PARKER HANNIFIN CORP 2024

ENGINEERING YOUR SUCCESS.

[SITE MAP](#) [SAFETY](#) [PRIVACY POLICIES](#) [TERMS AND CONDITIONS](#)





[Home](#)

[Products](#)

[Support](#)

[Industries](#)

[Solutions](#)

[Where to Buy](#)

---




[Home](#)
[Products](#)
[Help & Support](#)
[Industries](#)
[Where To Buy](#)
[Home](#) / [Products](#) / [Regulators, Monitoring, Sensors and Flow Control](#) / [Sensors](#) / [SCK Cable](#) / [SensoControl](#) / [SCK-400-02-55](#)

## SCK Cable / SensoControl

Part #: SCK-400-02-55



SensoControl® cables are designed according to the requirements of industrial sensors and switches.

[View Series Page](#)
[Share / Email](#)
[Print](#)

### Technical Specifications

Product Type:	Connection cable, assembled (open cable end)	Brand:	SensoControl
Product Style:	Industrial cable	Division:	High Pressure Connectors Europe Division
Application:	Industrial sensors and switches	Industry:	Industrial
Length:	2 m	Technology:	Cable
Port Size:	M12 cable jack; 90° angled	Specifications Met:	CE

California Residents: Prop-65 Warning

Safety Warning

### Item Information

SensoControl® cables are designed according to the requirements of industrial sensors and switches. M12 cables and M12 plugs are therefore usually

- compact
- screened
- 5-pin

#### 5-pin design

The 5-pin cables are suitable for both 4 and 5-pin connections. 5-pin cables are fully compatible with sensor versions with 4 pin plugs. This means that a (5-pin) cable design can always be used for pressure switches (Controller Family SCxSD & SCOTC) and sensors irrespective of the plug version and the different number of pins. The SCK-400-xxx-x5 cables are compatible with all components with M12 plug connections.

#### Shielding

The screening ensures high interference resistance and operational safety.

- High EMC protection

Features / Advantages:

- One cable for everything
- Compact
- Resistant to interference
- Compatible with:
  - sensors
  - controllers
  - M12 plugs
  - DIN EN 175301 (connector plugs)
- Different lengths

Markets:

- Energy
- Environment
- Industrial
- Infrastructure
- Machine tools
- Materials handling
- Power generation
- Process
- Mobile hydraulic
- Power packs

Applications:

- Industrial sensors and switches
- Diagnosis sensors and diagnostic measuring devices

## CAD Drawings + Files



 STP

## Related Documents



### Americas

USA, Canada, Mexico

[cparker@support.parker.com](mailto:cparker@support.parker.com)  
[1-800-272-7537](tel:1-800-272-7537)

### Europe

[00800 27 27 5374](tel:00800-27-27-5374)

**AOG (Aircraft on Ground)**

[1-949-851-4357](tel:1-949-851-4357)

+ [Company Information](#)

+ [Global Operations](#)

+ [Help & Support](#)

+ [Follow Us :](#)

© PARKER HANNIFIN CORP 2024

**ENGINEERING YOUR SUCCESS.**

[SITE MAP](#) [SAFETY](#) [PRIVACY POLICIES](#) [TERMS AND CONDITIONS](#)



# SCP01 pressure sensors

## Device features

- Small design
- Stainless steel measuring cell
- Stainless steel housing
- Shock and vibration proof
- Wide range of compatible substances
- High linearity
- Long-term stability
- Substance temperature -40 to 125 °C
- Up to 1000 bar
- High burst pressure
- 1 ms
- Eroding milling
- Encapsulated electronics



The SCP01 pressure sensor was designed to meet industrial requirements and is used in control, regulating and monitoring systems.

The SCP01 is characterised by its compact design, high linearity and excellent interference immunity. It is suitable for quick control solutions because of its fast response speed. The compact stainless steel housing is good for harsh environmental conditions. All components which come into contact with the substance are made from stainless steel. This feature, combined with the welded, thin-layer measuring cell, ensure optimal compatibility with the substance. The electronics are encapsulated for protection against vibration damage and moisture.

In order to ensure an exact pressure measurement and to avoid disturbances, an EDM hole is integrated. This minimises the cavitation of air and dirt, thus preventing the measuring cell from being influenced by pressure surges and pressure peaks.

This product is ideal for permanent series usage in hydraulic applications because of its long lifespan, high accuracy, high reliability and sturdy stainless steel construction.

## Typical application range

- General machine construction
- Injection-mould machines
- Die-casting machines
- Press construction
- Test benches
- Tool-making machines

# SCP01 pressure sensors

## Technical data

### SCP01-xxx-x4-0x (bar / G1/4" BSPP)

SCP01-	010	016	025	040	060	100	160	250	400	600	1000
Pressure range $P_n$ relative 0... (bar)	10	16	25	40	60	100	160	250	400	600	1000
Overload pressure* $P_{max}$ relative (bar)											1.5 x $P_n$
Burst pressure** $P_{burst}$ relative (bar)											2.5 x $P_n$

### SCP01-xxxxP-x5-0x (psi / 1/4 NPT) & SCP01-xxxxP-x7-0x (psi / 7/16-20 UNF)

SCP01-	0150P	0250P	1000P	3000P	5000P	9000P***
Pressure range $P_n$ relative 0... (psi)	150	250	1000	3000	5000	9000
Overload pressure* $P_{max}$ relative (psi)	2 x $P_n$					
Bursting pressure** $P_{burst}$ relative (psi)	4 x $P_n$					

\* DIN EN 60770-1 / \*\* DIN 16086 / \*\*\* only 1/4 NPT

#### General

Response time	≤1 ms
Long-term stability	< 0.2 % FS / a
Load change	> 20 million
Weight	Approx. 80 g
MTTfd	> 100 years

#### Accuracy

Non-linearity	BFSL according to IEC 61298-2 ≤± 0.25 %FS
Accuracy	Type ≤± 0.25 %FS Max. ≤± 0.5 %FS
Total error at 0 to 85 °C	≤±1 %FS

#### Temperature coefficient

Zero point	Max. ≤± 0.2 %FS/10 K
Output range	Max. ≤± 0.2 %FS/10 K

#### Material

Housing	Stainless steel 1.4404
---------	------------------------

#### Ambient conditions

Ambient temperature range	-40...+85 °C
Fluid temperature range	-40 to +125 °C
Compensated range	0 to +85 °C
Storage temperature	-40 to +125 °C
Vibration resistance	IEC 60068-2-6: 20 g
Shock resistance	IEC 60068-2-27: 500 g

#### Electrical protection

Short-circuit, signal to GND, reverse polarity protection

#### EM compatibility

Disturbance emissions	EN 61000-6-3
Resistance to interference	EN 61000-6-2

#### Process connection

Eroding milling	0.6 mm
Tightening torque	Max. 35 Nm

Process connection	G1/4A BSPP; DIN 3852 T11, Form E	SAE 7/16 UNF Male O ring	1/4 NPT
Seal	Sealing ring DIN 3869-14-FKM	O ring 8,12x1,83 FKM	
Parts in contact with substances	FKM Stainless steel 1.4404 Stainless steel 1.4548	FKM Stainless steel 1.4404 Stainless steel 1.4548	FKM Stainless steel 1.4404 Stainless steel 1.4548

Output signal	0 to 20 mA	4 to 20 mA (3-wire)	4 to 20 mA (2-wire)	0 to 10 V
Auxiliary power $V_+$	+9 to 36 VDC	+9 to 36 VDC	+9 to 36 VDC	+14 to 36 VDC
Max. load	≥50 to ≤500 Ω ( $V_+ - 9 V$ ) / 28 mA	≥50 to ≤500 Ω ( $V_+ - 9 V$ ) / 28 mA	≥50 to ≤500 Ω ( $V_+ - 9 V$ ) / 20 mA	≥10 kΩ

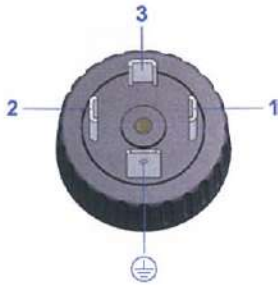


# SCP01 pressure sensors

## Pin assignment

### Device plug DIN EN 175301-803 Form A 4-pole (old 43650)

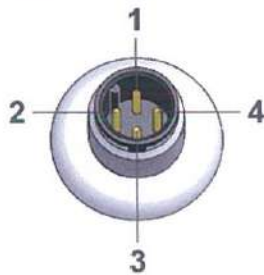
SCP01-xxx-xx-06



PIN	0 to 20 mA	4 to 20 mA (3-wire)	4 to 20 mA (2-wire)	0 to 10 V
1	P signal	P signal	P signal	P signal
2	0 V / GND	0 V / GND	n.c.*	0 V / GND
3	V <sub>+</sub>	V <sub>+</sub>	V <sub>+</sub>	V <sub>+</sub>
⊕			n.c.*	
Protection class			IP65	

### Circular connector M12x1 4-pole

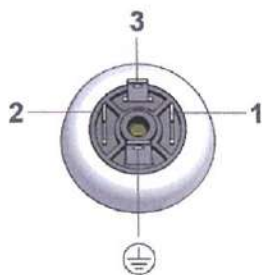
SCP01-xxx-xx-07



PIN	0 to 20 mA	4 to 20 mA (3-wire)	4 to 20 mA (2-wire)	0 to 10 V
1	V <sub>+</sub>	V <sub>+</sub>	V <sub>+</sub>	V <sub>+</sub>
2	P signal	P signal	P signal	P signal
3	0 V / GND	0 V / GND	n.c.*	0 V / GND
4			n.c.*	
Material		Plastic PBT-GF30 Ultradur B4300 G6 black		
Protection class		IP67		

### Device plug Industrial Micro DIN 9.4 mm

SCP01-xxx-xx-0C



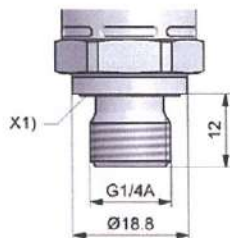
PIN	0 to 20 mA	4 to 20 mA (3-wire)	4 to 20 mA (2-wire)	0 to 10 V
1	P signal	P signal	P signal	P signal
2	V <sub>+</sub>	V <sub>+</sub>	V <sub>+</sub>	V <sub>+</sub>
3			n.c.*	
⊕	0 V / GND	0 V / GND	n.c.*	0 V / GND
Protection class			IP65	

\*) n.c. = not connected

## Dimensioned drawings

SCP01-xxx-x4-0x

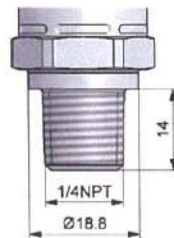
G1/4 BSPP ED



X1) = ED-seal

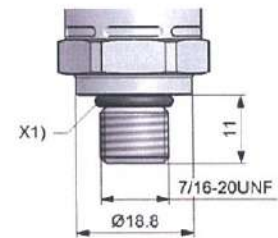
SCP01-xxxP-x5-0x

1/4 NPT



SCP01-xxxP-x7-0x

SAE 7/16-20UNF



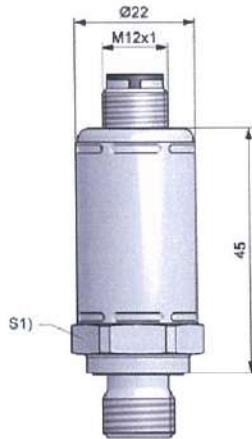
X1) = O ring 8.92 x 1.83



# SCP01 pressure sensors

## Dimensioned drawings

SCP01-xxx-xx-07



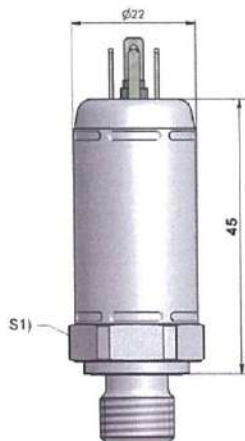
S1) = SW22

SCP01-xxx-xx-06



S1) = SW22

SCP01-xxx-xx-0C



S1) = SW22

## Order code

### Pressure sensor SCP01 (bar)

SCP01-xxx-x4-0x

#### Pressure range (bar)

0...10 bar	010
0...16 bar	016
0...25 bar	025
0...40 bar	040
0...60 bar	060
0...100 bar	100
0...160 bar	160
0...250 bar	250
0...400 bar	400
0...600 bar	600
0...1000 bar	1000

#### Output signal

0 to 20 mA	1
4 to 20 mA (3-wire)	2
4 to 20 mA (2-wire)	3
0 to 10 V	4

#### Connecting plug

Circular connector M12x1 4-pole	7
Device connector DIN EN 175301-803 Form A 4-pole	6
Device plug industrial micro DIN 9.4mm	C

### Pressure sensor SCP01 (psi)

SCP01-xxxxx-xx-0x

#### Pressure range (psi)

0 to 150 psi	0150P
0 to 250 psi	0250P
0 to 1000 psi	1000P
0 to 3000 psi	3000P
0 to 5000 psi	5000P
0 to 9000 psi	9000P

#### Output signal

0 to 20 mA	1
4 to 20 mA (3-wire)	2
4 to 20 mA (2-wire)	3
0 to 10 V	4

#### Process connection

SAE 7/16 UNF Male O ring (P <sub>n</sub> max. = 400 bar)	7
1/4 NPT (P <sub>n</sub> max. = 600 bar)	5

#### Connecting plug

Circular connector M12x1 4-pole	7
Device connector DIN EN 175301-803 Form A 4-pole	6



[Home](#)

[Products](#) ▾

[Help & Support](#)

[Industries](#)

[Where To Buy](#)

[Home](#) / [Products](#) / [Filters, Collectors, Separators, Purifiers](#) / [Filter Parts and Accessories](#) / [Hydraulic Filter Accessories](#) / [Filter Pressure and Vacuum Indicator - FMU and LPS Series](#)

## Filter Pressure and Vacuum Indicator - FMU and LPS Series

Part #: UT11019



A comprehensive range of high quality indicators for mobile, industrial and marine applications.

[View Series Page](#) ☰ [Share / Email](#) ↗ [Print](#) 🖨

### Technical Specifications

Maximum Fluid Temperature:	80°C	Port Connection:	G¼" Conical
Indicator Type:	Electrical Switch N.C.	Port Location:	Below
Indicator Pressure Setting:	1.0 bar	Maximum Operating Pressure:	80 bar
Seal Material:	n/a	Electrical Connection:	Protective Connector PG7
Housing Material:	Brass	Power Supply Voltage:	48V

⚠ Safety Warning

### Item Information

### CAD Drawings + Files

### Related Documents



Americas

9/30/24, 8:13 AM

UT11019 - Filter Pressure and Vacuum Indicator - FMU and LPS Series | Parker NA

USA, Canada, Mexico

[cparker@support.parker.com](mailto:cparker@support.parker.com)  
[1-800-272-7537](tel:1-800-272-7537)

Europe

[00800 27 27 5374](tel:00800-27-27-5374)

AOG (Aircraft on Ground)

[1-949-851-4357](tel:1-949-851-4357)

---

Company Information

---

Global Operations

---

Help & Support

---

Follow Us :

© PARKER HANNIFIN CORP 2024

ENGINEERING YOUR SUCCESS.

[SITE MAP](#) [SAFETY](#) [PRIVACY POLICIES](#) [TERMS AND CONDITIONS](#)

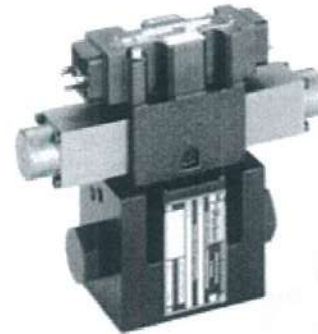
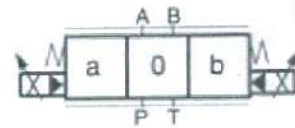


典型的应用工况包括：以高/低速控制模式对执行机构进行重复性的速度控制，并实现平稳地加速和减速。

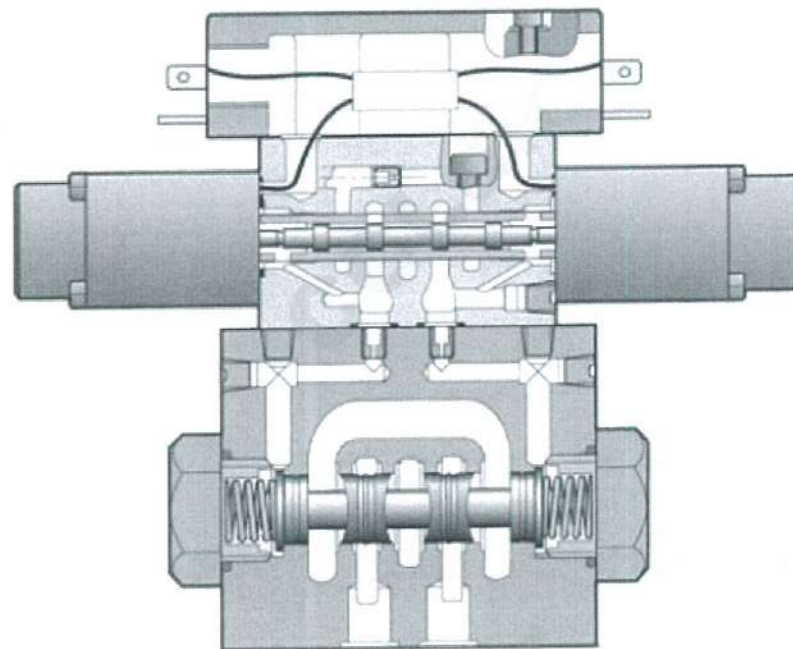
结合 PWD00A-400 数字式功率放大器，阀的工作参数可进行存储、修改和复制。

#### 技术特征

- 递增型的流量特性使流量调节灵敏
- 故障安全型中位机能
- 有中位监测选项



D31FW

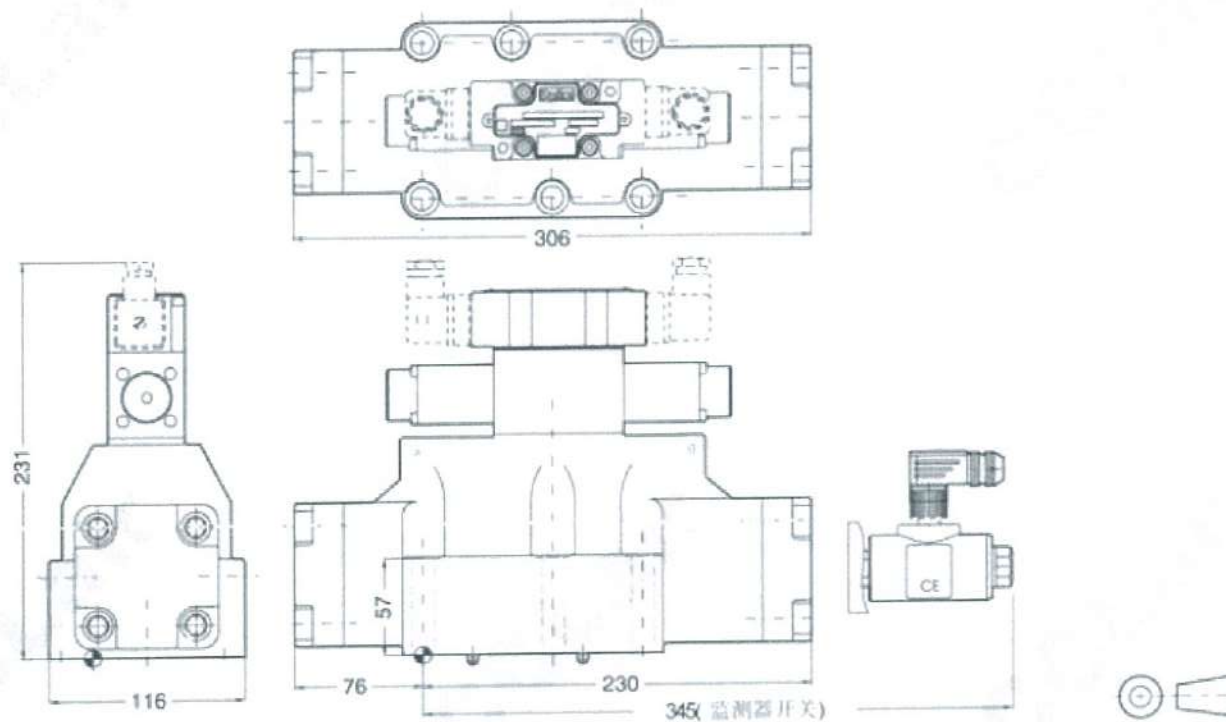


规格	NG10 (CETOP 5)	NG16 (CETOP 7)	NG25 (CETOP 8)	
安装面尺寸	DIN 24340 / ISO 4401 / CETOP RP121 / NFPA			
安装姿态	任意			
环境温度	[°C]	-20...+60		
重量	[kg]	7.1	10.8	19
液压参数				
最高工作压力	[bar]	油口 P, A, B, T, X: 最高 350; 油口 Y: 最高 10		
工作油液		液压油, 符合 DIN 51524...535. 采用其它类型油液时, 可按要求供货		
油温	[°C]	-20...+60		
容许粘度范围	[mm <sup>2</sup> /s]	20...380		
推荐粘度范围	[mm <sup>2</sup> /s]	30...80		
过滤要求		ISO 4406 (1999) 18/16/13 (相当于 NAS 1638: 7级)		
公称流量				
每控制边 Ap=5bar 时*	[l/min]	75	200	400
泄漏量, 100 bar时	[ml/min]	<100	<200	<600
先导控制供油压力	[bar]	20~350 (50时, 动态性能最佳)		
先导控制流量, 100 bar时	[l/min]	<1.2		
先导控制流量, 阶跃响应时	[l/min]	0.8	1.7	3.8
静/动态特性				
阶跃响应时间, 100%指令信号	[ms]	60	75	100
滞环	[%]	< 5		
电气特性				
负荷率	[%]	100		
防护等级		IP54		
电磁铁		代号 L		
供电电压	[V]	6		
耗损电流	[A]	2.5		
阻抗	[Ohm]	2.2		
线圈绝缘等级		F (155°C)		
电气连接		2+PE, 符合 EN 175301-801		
接线截面积 (最小)	[mm <sup>2</sup> ]	3x1.5 (AWG 16) 全编织屏蔽		
接线长度 (最长)	[m]	50		
阀芯位置监测开关				
防护等级		IP65		
环境温度	[°C]	0...70		
供电电压	[V]	18...42, 脉动 <10% 有效值		
耗损电流, 空载	[mA]	30		
最大输出电流				
每通道, 阻性	[mA]	400		
最小输出负载				
每通道, 阻性	[kOhm]	100		
最大输出电压降, 0.2A时	[V]	< 1.1		
最大输出电压降, 0.4A时	[V]	< 1.6		
EMC (电磁兼容)		符合 EN 50081-1/EN 50082-2		
最大环境总电磁场强度	[A/m]	1200		
距邻近AC电磁铁的最短距离	[m]	0.1		
电气连接接口		4+PE, 符合 IEC 61076-2-101 (M12)		

样本号 HY11-2500/CH  
安装尺寸


先导式比例方向控制阀  
D\*1FW 系列

D91FW



表面粗糙度	 套件	 6 x M12x95 DIN 912 12.9	 94 Nm ± 15 %	 套件 丁腈橡胶
	BK360			SK-D91FW-N20



	<b>PT. KOMIPO PEMBANGKITAN JAWA BALI</b> <b>PLTU TANJUNG JATI B UNIT 3&amp;4</b>	Doc. Ref	: KPJB-0951-02
		Form No.	: KPJB-0951-02-ZZ-FM-16
	<b>TERM OF REFERENCE</b>	Design Div.	: Finance and Administration
		Revision No.	: 00

### 1. Background

Material handling is the initial component in PT. Tanjung Jati B. The Stacker and Reclaimer Unit serves as a tool to Stacking coal from vessel to Stock Pile and Reclaiming coal from stock pile to Silo Unit.

In accordance with its function, the optimal condition of the Stacker Reclaimer to directly move coal is always equipped with a Hydraulic System as one of the equipment that functions to Up/Down Boom, Up/Down Cabin Operator, Up/Down Bucket Wheel Chute and Bypass/Unload the Stacker Reclaimer. Therefore, it is necessary to inspect and recondition the Hydraulic System so that it can function properly.

The spare parts will be provided to equipment as follow:

Name : HYDRAULIC SYSTEM STACKER RECLAIMER  
Brand : PARKER

### 2. Spare Part Data

2.1. System : COAL HANDLING  
Equipment : STACKER RECLAIMER

2.2. Spare Part Group :

- Overhaul
- PM & PdM
- Run to Failure
- Strategic Parts
- Strategic Equipment


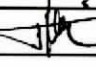
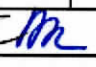
2.3. Usage Plan : PARTS WILL BE INSTALLED BASE ON SERVICE REQUEST OR WORK ORDER


2.4. Description : SPARE PARTS OF HYDRAULIC SYSTEM STACKER RECLAIMER

### 3. Work Scope

3.1 Procurement of spare parts hydraulic system stacker reclaimer as follows:

No.	Maximo Item ID	Maximo Description	Quantity (set)
1.	223462	VALVE,BALL, FEMALE TO FEMALE, TYPE:BVGT4-3/4L, THREAD SIZE:3/4INCH, MAX PRESSURE: 40BAR, 580PSI, BODY NICKEL PLATED BRASS, FLOW DIAMETER:20MM, MFG:PARKER ✓	2 ✓
2	223463	VALVE,CHECK, COLORFLOW CHECK VALVE, C SERIES TYPE:9C1600S65, MAX PRESSURE: 3000 PSI, FREE FLOW IN ONE DIRECTION, FLOW RATE: 151L/MIN, CONNECTION SIZE: 1 INCH, MFG:PARKER ✓	2 ✓
3	223464	VALVE,LINEAR,DIRECTIONAL CONTROL, ERMETO DIN NON RETURN VALVE, TYPE:RHZ25SREDOMDCF, MAX PRESSURE:420BAR, CONNECTION 2:25MM, CONNECTION 1:G1A INCH, INSIDE Ø: 19MM, MFG:PARKER ✓	2 ✓
4	223465	VALVE,LINEAR,DIRECTIONAL CONTROL, ERMETO DIN NON RETURN VALVE, TYPE:RHZ12LREDOMDCF, MAX PRESSURE:400BAR, CONNECTION 2:12MM, CONNECTION 1:G3/8A INCH, INSIDE Ø: 9.5MM, MFG:PARKER ✓	2 ✓
5	223466	BREATHER, SPIN-ON AIR BREATHER, TYPE:H00834001, WEIGHT:0.96KG, FLOW RATE:1700L/MIN, WORKING TEMP:-20°C ~ +90°C, MFG:PARKER ✓	2 ✓
6	223467	CABLE,ELECTRICAL, SCK CABLE/SENSOCONTROL, TYPE:SCK-400-02-55, INDUSTRIAL CABLE, LENGTH:2M, PORT SIZE:M12 CABEL JACK; 90° ANGLED, MFG:PARKER ✓	4 ✓


Sign			
	Staff	Leader	Manager

	<b>PT. KOMIPO PEMBANGKITAN JAWA BALI</b> <b>PLTU TANJUNG JATI B UNIT 3&amp;4</b>	Doc. Ref	: KPJB-0951-02
		Form No.	: KPJB-0951-02-ZZ-FM-16
<b>TERM OF REFERENCE</b>		Design Div.	: Finance and Administration
		Revision No.	: 00

7	223469	FILTER ELEMENT, FILTER PRESS AND VACUUM INDICATOR-FMU & LPS SERIES, TYPE: UT11019, INDICATOR:ELECTRICAL SW N/C, PRESS:1BAR, MAX PRESS:80BAR, PORT:G1/2 CONICAL, CNTR:PROTECTIVE PG7, V:48VDC, MFG:PARKER	2
8	223470	VALVE,SAFETY RELIEF, PILOT OPERATED RELIEF VALVE, TYPE:RAH101S50, PRESSURES:350 BAR (5000 PSI), FLOWS:113 LPM (30 GPM), CAVITY SIZE:C10-2, MFG:PARKER	2
9	223471	PRESSURE TRANSMITTER, SENSOCONTROL TEST POINT, TYPE:EMA3/1/4EDCF, CONNECTION SIZE:M12X1.5 TO M52X2.0 G 1/8 TO G 1.2, OPERATING PRESSURE:160 TO 400, 2321 TO 5802, 16 TO 40, MFG:PARKER	28
10	223472	GAUGE,LEVEL/TEMPERATURE, PRESSURE GAUGE, TYPE:PGC0631400, THREAD SIZE: 63MM, MANOMET, CAPACITY:0-400 BAR, MFG:PARKER	4
11	223473	VALVE,SAFETY RELIEF, DIRECT OPERATED PRESSURE RELIEF VALVE, TYPE: RDM2PT21SVG, GAUGE PORT: G1/4, MAX PRESSURE:350/50 BAR, PORT CONNECTION:NG06, FLOW RATE: 40L/MIN, MFG:PARKER	2
12	223692	PRESSURE TRANSMITTER, PRESSURE SENSOR, TYPE:SCP03-400-34-06, WORKING PRESSURE:400 BAR, OUTPUT:4-20MA, MFG:PARKER	4
13	223475	MANIFOLD, TYPE: PSHH-MB-08111-B0-0-SH, HYDRAULIC POWER UNIT STACKER RECLAIMER, MFG: PARKER	2
14	223476	MANIFOLD, TYPE: PSHH-MB-05022-B0-0-SH, HYDRAULIC POWER UNIT STACKER RECLAIMER, MFG: PARKER	4
15	223477	MANIFOLD, TYPE: PSHH-MB-05021-B0-0-SH, HYDRAULIC POWER UNIT STACKER RECLAIMER, MFG: PARKER	4
16	223693	VALVE,SOLENOID, PROPORTIONAL VALVE, TYPE: D31FBE02CC4NKW0, 75L/MIN, MFG: PARKER	2
17	223479	ELECTRONIC MODULE,STANDARDISED, E-MODULE FOR PROPORTIONAL DIRECTIONAL CONTROL VALVES, TYPE: PWD00A-400, IN VOLTAGE: 18-30VDC, OPERATING CURRENT: 2.2A, CABLE LENGTH: 50M, MFG: PARKER	2
18	104854	VALVE,SAFETY RELIEF, HYDRAULIC SYSTEM, RDH082S50, PARKER	2
19	104856	VALVE,SOLENOID, D1VW002ENJW91, D1VW002ENJW, PARKER POWER 2 WATT	2
20	104857	VALVE,SOLENOID, MODEL: D1VW004CNJW, CURRENT RATING: 1.29A, MAX OPERATING PRESSURE:350.0 BAR, MFG: PARKER	2

#### 4. Bidder Qualification

- 4.1. Supplier or distributor of product must have valid Trading Business License (SIUP).
- 4.2. Supplier or distributor of product must have valid Certificate of Company Registration (TDP)
- 4.3. Supplier or distributor of product must have supported letter from manufacturer, must have certificate authorized distributor of Parker in Indonesia and certificate from the ministry of industry and trade in Indonesia.
- 4.4. Professional, competent, resourceful and experienced Agent/Company/Distributor which is able to provide/supply hydraulic system.
- 4.5. Domestic Professional company which participates in this bidding shall submit a copy of contract/purchase order confirming that the company has an experience in supplying with the evidence document.

Sign			
	Staff	Leader	Manager

	<b>PT. KOMIPO PEMBANGKITAN JAWA BALI PLTU TANJUNG JATI B UNIT 3&amp;4</b>	Doc. Ref	: KPJB-0951-02
		Form No.	: KPJB-0951-02-ZZ-FM-16
	<b>TERM OF REFERENCE</b>	Design Div.	: Finance and Administration
		Revision No.	: 00

- 4.6. Any business entity on the PLN Black List is not allowed to participate in this Bidding.
- 4.7. It is necessary to conduct a field survey of the Hydraulic System before making a technical and price offer.
- 4.8. The bidder must have CSMS Risk with Low Level

**5. Delivery of material and/or services**

- 5.1. Required date is **maximum 31 December 2025**
- 5.2. Delivery point is KPJB's Warehouse, PLTU Tanjung Jati B Unit 3&4, Jepara, Central Java.

**6. Requirement of Documents**

Within delivery the materials, supplier should submit documents as follow:

- 6.1. Drawing of hydraulic cylinder shaft
- 6.2. Warranty letter for 1 year from Supplier.
- 6.3. Supplier or supplier must include Conformance Certificate for Material Supplied (CCMS) from manufacture.
- 6.4. Supplier or supplier must include valid Trading Business License (SIUP).
- 6.5. Supplier or supplier must include valid Certificate of Company Registration (TDP).
- 6.6. Supplier or supplier must include supported letter from manufacturer or from authorized distributor in Indonesia when submit the bidding quotation.
- 6.7. Manual book and services for each spare part supplied.

**7. Technical Specification**

- 7.1. All of technical specification should be comply with determined specification, cannot be changed, no crack, should be new 100%, genuine, no defect, and can be used properly.
- 7.2. In the case PT KPJB decline the delivered material, supplier should replace the material. If supplier can't replace it, they will be penalized in accordance to General Term & Condition (GTC) of the PO.
- 7.3. For more detail, please see attachment.

**8. Acceptance Criteria**

- 8.1. Delivery time is complied.
- 8.2. All delivered materials are accordance to PO requirement, specification and condition of the TOR.
- 8.3. All of required document are fulfilled.
- 8.4. Technical support on site from parker Indonesia or engineer that has been certified by parker for hydraulic system when installation spare parts.

**9. Standard of Quality**


Quality of the material and/or services should comply with standard, code, manufacturer specification and user's requirement.

**10. Warranty**

Generally, if there isn't mentioned at other clause, supplier should warrant the material for 1 year after material being receiving by PT. KPJB.

**11. Material Technical Data Sheet**

- 11.1 Please see attachment

Sign			
	Staff	Leader	Manager



PT. KOMIPO PEMBANGKITAN JAWA BALI  
PLTU TANJUNG JATI B UNIT 3&4

TERM OF REFERENCE

Doc. Ref	: KPJB-0951-02
Form No.	: KPJB-0951-02-ZZ-FM-16
Design Div.	: Finance and Administration
Revision No.	: 00

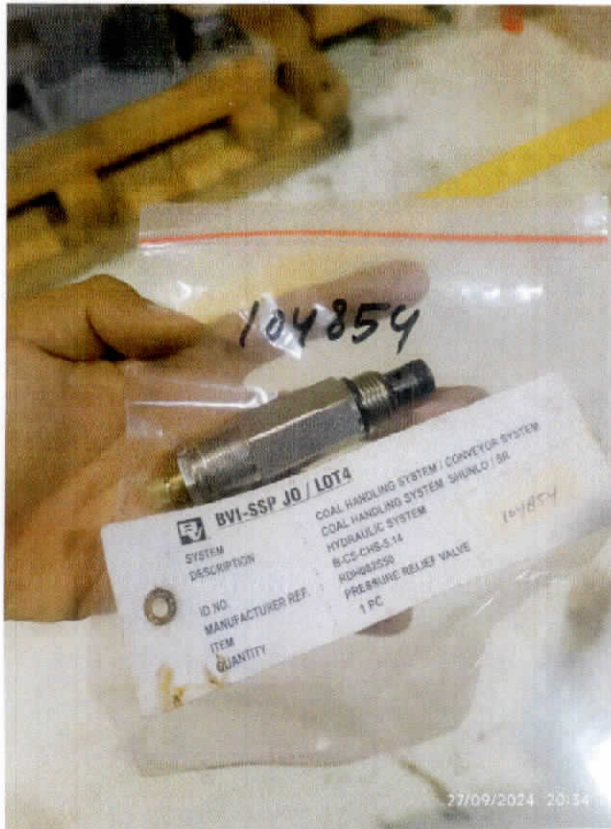
12. Picture



Sign			
	Staff	Leader	Manager

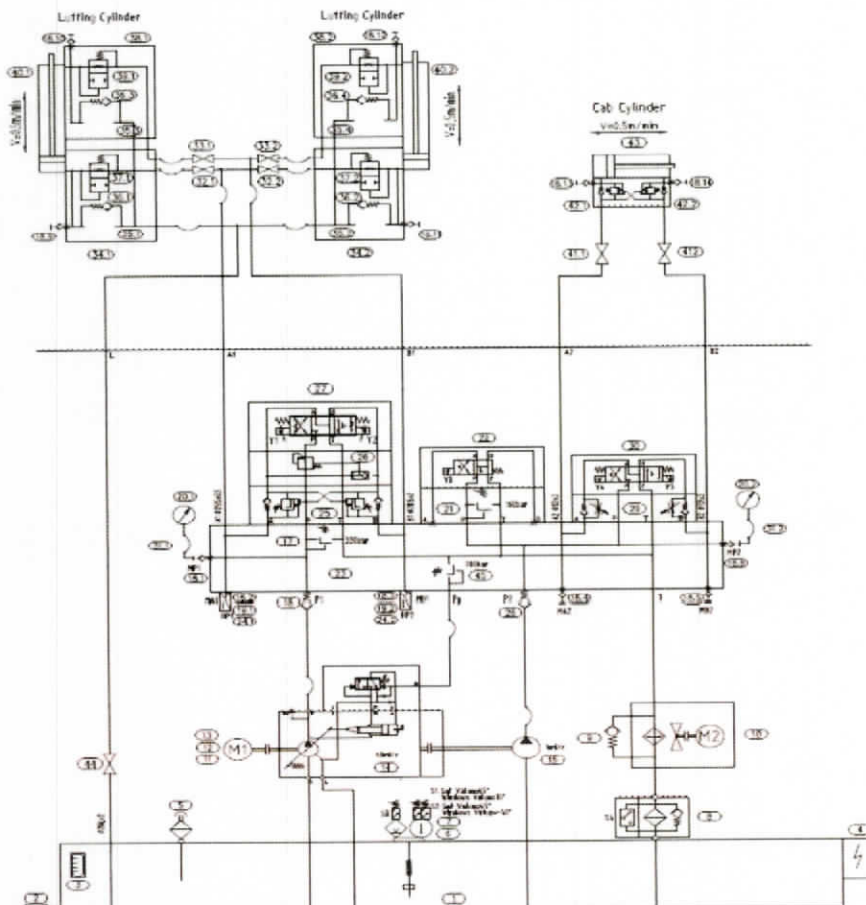


Doc. Ref	: KPJB-0951-02
Form No.	: KPJB-0951-02-ZZ-FM-16
Design Div.	: Finance and Administration
Revision No.	: 00




**13. Hydraulic System**

**14.1 Detail system of hydraulic pump PHSH-PU-08109-A0-0-SH**



Sign			
	Staff	Leader	Manager


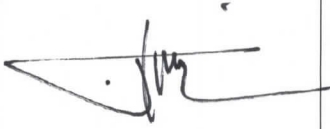

	<b>PT. KOMIPO PEMBANGKITAN JAWA BALI PLTU TANJUNG JATI B UNIT 3&amp;4</b>	Doc. Ref	: KPJB-0951-02
		Form No.	: KPJB-0951-02-ZZ-FM-16
	<b>TERM OF REFERENCE</b>	Design Div.	: Finance and Administration
		Revision No.	: 00


**14. CSMS Risk Level:**

- 1. Low
- 2. Moderate
- 3. High
- 4. Very High
- 5. Extreme

**15. Others**

15.1 Aanwijzing process is needed.

Prepared by	Checked by	Approved by
		
<u>Yoga Priya Andika</u> Staff	<u>I Wayan Eka Ariawan</u> Leader	<u>Muhammad Rokhim</u> Manager
Date :	Date :	Date :

	<b>PT. KOMIPO PEMBANGKITAN JAWA BALI</b>	Doc. Ref	: KPJB-0951-02
	<b>PLTU TANJUNG JATI B #UNIT 3&amp;4</b>	Form No.	: KPJB-0951-02-ZZ-FM-03
	<b>REQUEST FOR QUOTATION</b>	Design Div.	: Finance and Administration
		Revision No.	: 00

Date	RFQ No:	PRF No:
December 5, 2025	K18940	K18940
SUBJECT : The Purchasing of Spare Parts for Hydraulic System Stacker Reclaimer (PARKER)		

KPJB on behalf of PT. PLN hereby request your quotation for material/services below :

No	Item Code	Description	No		Item Code
			Qty	Unit	

As per the attachment

- The quotation shall be submitted in one sealed envelope containing both the priced and unpriced proposals, addressed to Procurement Team, F&A Division PT. KPJB. The original documents should be received by KPJB not later than 11.00 WIB date 18 DEC 2025 by registered mail or direct submission after PLTU Tanjung Jati B security check and registration.
- Aanwijzing will be held in KPJB on .00 09 DEC 2025.
- Validity of Quotation price should be minimum 3 months.
- Prices and detailed information should be specified about the materials and services in the quotation by strictly following the quotation form attached hereto.
- Payment will be made by Telegraphic Transfer (T/T) within forty five (45) days after invoice received, attached with delivery or work completion report (Invoice, Good receive form, MOV, BAPP, etc.) issued by PT. KPJB.
- Performance Bond is applicable for PO  $\geq$  IDR 500.000.000: minimum 5% from PO price including VAT. Validity of Bank Guarantee is covering delivery period + 130 calendar days.
- Warranty period is 12 months (365 calendar days).
- **Delivery time: not later than December 31, 2025**
- **Delivery should be completed to PT. KPJB's warehouse, PLTU Tanjung Jati B Unit #3&4.**
- **Certificate should be submitted at the delivery time: Conformance Certificate for Material Supplied (CCMS) issued by manufacture and Drawing of Hydraulic Cylinder Shaft is required at the delivery time.**
- Warranty letter that state "The material is genuine, no defect, new and can be used properly" should be submitted at the time of delivery.
- All documents and communications shall be in English.
- All terms and conditions of this contract must be subject to and governed by PT. KPJB's Terms and Conditions for Contract attached hereto.
- In case of hazardous material, Material Safety Data Sheets (MSDS) and other related document for hazardous material shall be submitted at the time of delivery.
- For hand powered tools / powered tools: must be attached with tools certificate from manufacturer.
- For chemicals: All material delivery must be completed with symbol & label as required on regulation in every containers/other packaging.
- For service: All personnel must have appropriate certification as required on local HSE Regulation.


Sincerely Yours,

  
**Hendang Suroso**  
 F&A. Manager

Date

Attachment :


1. Material list
2. Quotation format
3. Unprice document required
4. KPJB Contractor Safety Rules
5. PT. KPJB's General Terms and Conditions for Contract
6. Pakta Integritas Form
7. Term of Reference

 <b>PT. KOMIPO PEMBANGKITAN JAWA BALI</b> <b>PLTU TANJUNG JATI B #UNIT 3&amp;4</b> <b>REQUEST FOR QUOTATION</b>	Doc. Ref	: KPJB-0951-02
	Form No.	: KPJB-0951-02-ZZ-FM-03
	Design Div.	: Finance and Administration
	Revision No.	: 00


Attachment 1: RFQ No. K18940

### MATERIAL LIST

Item No	Item Code	Description	Quantity	
			Order	Unit
1	223462/	VALVE,BALL, FEMALE TO FEMALE, TYPE:BVGT4-3/4L, THREAD SIZE:3/4INCH, MAX PRESSURE: 40BAR, 580PSI, BODY NICKEL PLATED BRASS, FLOW DIAMETER:20MM, MFG:PARKER	2,00	SET
2	223463/	VALVE,CHECK, COLORFLOW CHECK VALVE, C SERIES TYPE:9C1600S65, MAX PRESSURE: 3000 PSI, FREE FLOW IN ONE DIRECTION, FLOW RATE: 151L/MIN, CONNECTION SIZE: 1 INCH, MFG:PARKER	2,00	SET
3	223464/	VALVE,LINEAR,DIRECTIONAL CONTROL, ERMETO DIN NON RETURN VALVE, TYPE:RHZ25SREDOMDCF, MAX PRESSURE:420BAR, CONNECTION 2:25MM, CONNECTION 1:G1A INCH, INSIDE Ø: 19MM, MFG:PARKER	2,00	SET
4	223465/	VALVE,LINEAR,DIRECTIONAL CONTROL, ERMETO DIN NON RETURN VALVE, TYPE:RHZ12LREDOMDCF, MAX PRESSURE:400BAR, CONNECTION 2:12MM, CONNECTION 1:G3/8A INCH, INSIDE Ø: 9.5MM, MFG:PARKER	2,00	SET
5	223466/	BREATHER, SPIN-ON AIR BREATHER, TYPE:H00834001, WEIGHT:0.96KG, FLOW RATE:1700L/MIN, WORKING TEMP:-20°C ~ +90°C, MFG:PARKER	2,00	SET
6	223467/	CABLE,ELECTRICAL, SCK CABLE/SENSOCONTROL, TYPE:SCK-400-02-55, INDUSTRIAL CABLE, LENGTH:2M, PORT SIZE:M12 CABEL JACK; 90° ANGLED, MFG:PARKER	4,00	SET
7	223469/	FILTER ELEMENT, FILTER PRESS AND VACUUM INDICATOR-FMU & LPS SERIES, TYPE: UT11019, INDICATOR:ELECTRICAL SW N/C, PRESS:1BAR, MAX PRESS:80BAR, PORT:G1/2 CONICAL, CNTR:PROTECTIVE PG7, V:48VDC, MFG:PARKER	2,00	SET
8	223470/	VALVE,SAFETY RELIEF, PILOT OPERATED RELIEF VALVE, TYPE:RAH101S50, PRESSURES:350 BAR (5000 PSI), FLOWS:113 LPM (30 GPM), CAVITY SIZE:C10-2, MFG:PARKER	2,00	SET
9	223471/	PRESSURE TRANSMITTER, SENSOCONTROL TEST POINT, TYPE:EMA3/1/4EDCF, CONNECTION SIZE:M12X1.5 TO M52X2.0 G 1/8 TO G 1.2, OPERATING PRESSURE:160 TO 400, 2321 TO 5802, 16 TO 40, MFG:PARKER	28,00	SET
10	223472/	GAUGE,LEVEL/TEMPERATURE, PRESSURE GAUGE, TYPE:PGC0631400, THREAD SIZE: 63MM, MANOMET, CAPACITY:0-400 BAR, MFG:PARKER	4,00	SET
11	223473/	VALVE,SAFETY RELIEF, DIRECT OPERATED PRESSURE RELIEF VALVE, TYPE: RDM2PT21SVG, GAUGE PORT: G1/4, MAX PRESSURE:350/50 BAR, PORT CONNECTION:NG06, FLOW RATE: 40L/MIN, MFG:PARKER	2,00	SET
12	223692/	PRESSURE TRANSMITTER, PRESSURE SENSOR, TYPE:SCPO3-400-34-06, WORKING PRESSURE:400 BAR, OUTPUT:4-20MA, MFG:PARKER	4,00	SET
13	223475/	MANIFOLD, TYPE: PSHH-MB-08111-B0-0-SH, HYDRAULIC POWER UNIT STACKER RECLAIMER, MFG: PARKER	2,00	SET
14	223476/	MANIFOLD, TYPE: PSHH-MB-05022-B0-0-SH, HYDRAULIC POWER UNIT STACKER RECLAIMER, MFG: PARKER	4,00	SET
15	223477/	MANIFOLD, TYPE: PSHH-MB-05021-B0-0-SH, HYDRAULIC POWER UNIT STACKER RECLAIMER, MFG: PARKER	4,00	SET
16	223693/	VALVE,SOLENOID, PROPORTIONAL VALVE, TYPE: D31FBE02CC4NKW0, 75L/MIN, MFG: PARKER	2,00	SET

	<b>PT. KOMIPO PEMBANGKITAN JAWA BALI</b>		Doc. Ref	: KPJB-0951-02
	<b>PLTU TANJUNG JATI B #UNIT 3&amp;4</b>		Form No.	: KPJB-0951-02-ZZ-FM-03
	<b>REQUEST FOR QUOTATION</b>		Design Div.	: Finance and Administration
			Revision No.	: 00

17	223479/	ELECTRONIC MODULE, STANDARDISED, E-MODULE FOR PROPORTIONAL DIRECTIONAL CONTROL VALVES, TYPE: PWD00A-400, IN VOLTAGE: 18-30VDC, OPERATING CURRENT: 2.2A, CABLE LENGTH: 50M, MFG: PARKER	2,00	SET
18	104854/	VALVE, SAFETY RELIEF, HYDRAULIC SYSTEM, RDH082S50, PARKER	2,00	SET
19	104856/	VALVE, SOLENOID, D1VW002ENJW91, D1VW002ENJW, PARKER POWER 2 WATT	2,00	SET
20	104857/	VALVE, SOLENOID, MODEL: D1VW004CNJW, CURRENT RATING: 1.29A, MAX OPERATING PRESSURE: 350.0 BAR, MFG: PARKER	2,00	SET

	<b>PT. KOMIPO PEMBANGKITAN JAWA BALI</b>	Doc. Ref	: KPJB-0951-02
	<b>PLTU TANJUNG JATI B #UNIT 3&amp;4</b>	Form No.	: KPJB-0951-02-ZZ-FM-03
	<b>REQUEST FOR QUOTATION</b>	Design Div.	: Finance and Administration
		Revision No.	: 00

Attachment 2: RFQ No. K18940

Quotation format


A. Price Quotation

<COMPANY LOGO>

**Quotation**

No:

Item No	Item Code	Description	Quantity		Price (IDR)	
			Order	Unit	Unit Price	Total
1	223462/	VALVE,BALL, FEMALE TO FEMALE, TYPE:BVGT4-3/4L, THREAD SIZE:3/4INCH, MAX PRESSURE: 40BAR, 580PSI, BODY NICKEL PLATED BRASS, FLOW DIAMETER:20MM, MFG:PARKER	2,00	SET		
2	223463/	VALVE,CHECK, COLORFLOW CHECK VALVE, C SERIES TYPE:9C1600S65, MAX PRESSURE: 3000 PSI, FREE FLOW IN ONE DIRECTION, FLOW RATE: 151L/MIN, CONNECTION SIZE: 1 INCH, MFG:PARKER	2,00	SET		
3	223464/	VALVE,LINEAR,DIRECTIONAL CONTROL, ERMETO DIN NON RETURN VALVE, TYPE:RHZ25SREDOMDCF, MAX PRESSURE:420BAR, CONNECTION 2:25MM, CONNECTION 1:G1A INCH, INSIDE Ø: 19MM, MFG:PARKER	2,00	SET		
4	223465/	VALVE,LINEAR,DIRECTIONAL CONTROL, ERMETO DIN NON RETURN VALVE, TYPE:RHZ12LREDOMDCF, MAX PRESSURE:400BAR, CONNECTION 2:12MM, CONNECTION 1:G3/8A INCH, INSIDE Ø: 9.5MM, MFG:PARKER	2,00	SET		
5	223466/	BREATHER, SPIN-ON AIR BREATHER, TYPE:H00834001, WEIGHT:0.96KG, FLOW RATE:1700L/MIN, WORKING TEMP:-20°C ~ +90°C, MFG:PARKER	2,00	SET		
6	223467/	CABLE,ELECTRICAL, SCK CABLE/SENSOCONTROL, TYPE:SCK-400-02-55, INDUSTRIAL CABLE, LENGTH:2M, PORT SIZE:M12 CABEL JACK; 90° ANGLED, MFG:PARKER	4,00	SET		
7	223469/	FILTER ELEMENT, FILTER PRESS AND VACUUM INDICATOR-FMU & LPS SERIES, TYPE: UT11019, INDICATOR:ELECTRICAL SW N/C, PRESS:1BAR, MAX PRESS:80BAR, PORT:G1/2 CONICAL, CNTR:PROTECTIVE PG7, V:48VDC, MFG:PARKER	2,00	SET		
8	223470/	VALVE,SAFETY RELIEF, PILOT OPERATED RELIEF VALVE, TYPE:RAH101S50, PRESSURES:350 BAR (5000 PSI), FLOWS:113 LPM (30 GPM), CAVITY SIZE:C10-2, MFG:PARKER	2,00	SET		
9	223471/	PRESSURE TRANSMITTER, SENSOCONTROL TEST POINT, TYPE:EMA3/1/4EDCF, CONNECTION SIZE:M12X1.5 TO M52X2.0 G 1/8 TO G 1.2, OPERATING PRESSURE:160 TO 400, 2321 TO 5802, 16 TO 40, MFG:PARKER	28,00	SET		
10	223472/	GAUGE,LEVEL/TEMPERATURE, PRESSURE GAUGE, TYPE:PGC0631400, THREAD SIZE: 63MM, MANOMET, CAPACITY:0-400 BAR, MFG:PARKER	4,00	SET		

 PT. KPJB	<b>PT. KOMIPO PEMBANGKITAN JAWA BALI</b>	Doc. Ref	: KPJB-0951-02
	<b>PLTU TANJUNG JATI B #UNIT 3&amp;4</b>	Form No.	: KPJB-0951-02-ZZ-FM-03
	<b>REQUEST FOR QUOTATION</b>	Design Div.	: Finance and Administration
		Revision No.	: 00


11	223473/	VALVE,SAFETY RELIEF, DIRECT OPERATED PRESSURE RELIEF VALVE, TYPE: RDM2PT21SVG, GAUGE PORT: G1/4, MAX PRESSURE:350/50 BAR, PORT CONNECTION:NG06, FLOW RATE: 40L/MIN, MFG:PARKER	2,00	SET		
12	223692/	PRESSURE TRANSMITTER, PRESSURE SENSOR, TYPE:SCP03-400-34-06, WORKING PRESSURE:400 BAR, OUTPUT:4-20MA, MFG:PARKER	4,00	SET		
13	223475/	MANIFOLD, TYPE: PSHH-MB-08111-B0-0-SH, HYDRAULIC POWER UNIT STACKER RECLAIMER, MFG: PARKER	2,00	SET		
14	223476/	MANIFOLD, TYPE: PSHH-MB-05022-B0-0-SH, HYDRAULIC POWER UNIT STACKER RECLAIMER, MFG: PARKER	4,00	SET		
15	223477/	MANIFOLD, TYPE: PSHH-MB-05021-B0-0-SH, HYDRAULIC POWER UNIT STACKER RECLAIMER, MFG: PARKER	4,00	SET		
16	223693/	VALVE,SOLENOID, PROPORTIONAL VALVE, TYPE: D31FBE02CC4NKW0, 75L/MIN, MFG: PARKER	2,00	SET		
17	223479/	ELECTRONIC MODULE,STANDARDISED, E-MODULE FOR PROPORTIONAL DIRECTIONAL CONTROL VALVES, TYPE: PWD00A-400, IN VOLTAGE: 18-30VDC, OPERATING CURRENT: 2.2A, CABLE LENGTH: 50M, MFG: PARKER	2,00	SET		
18	104854/	VALVE,SAFETY RELIEF, HYDRAULIC SYSTEM, RDH082S50, PARKER	2,00	SET		
19	104856/	VALVE,SOLENOID, D1VW002ENJW91, D1VW002ENJW, PARKER POWER 2 WATT	2,00	SET		
20	104857/	VALVE,SOLENOID, MODEL: D1VW004CNJW, CURRENT RATING: 1.29A, MAX OPERATING PRESSURE:350.0 BAR, MFG: PARKER	2,00	SET		
		<b>TOTAL</b>				
		<b>VAT 11%</b>				
		<b>GRAND TOTAL</b>				

..... rupiah (Please mention the price in words)

**Term and Conditions:**

1. The above price are included delivery cost to warehouse of PT. KPJB
2. Please mention Certificate is required at the delivery time
3. Payment will be made by Telegraphic Transfer (T/T) within forty five (45) days after invoice received, attached with delivery or work completion report issued by PT.KPJB.
4. Please mention Bank Account that will be use for payment (including Bank Name, Bank Address)
5. Please mention Name of Director

Place, [Month] [Date] [Year]  
 SIGN & COMPANY STAMP  
 DUTY STAMP / MATERAI (10000)  
 Name  
 (Title)

	<b>PT. KOMIPO PEMBANGKITAN JAWA BALI</b>	Doc. Ref	: KPJB-0951-02
	<b>PLTU TANJUNG JATI B #UNIT 3&amp;4</b>	Form No.	: KPJB-0951-02-ZZ-FM-03
	<b>REQUEST FOR QUOTATION</b>	Design Div.	: Finance and Administration
		Revision No.	: 00


B. Unpriced Quotation

<COMPANY LOGO>

**Quotation**

No:

Item No	Item Code	Description	Quantity		Delivery Time
			Order	Unit	
1	223462/	VALVE,BALL, FEMALE TO FEMALE, TYPE:BVGT4-3/4L, THREAD SIZE:3/4INCH, MAX PRESSURE: 40BAR, 580PSI, BODY NICKEL PLATED BRASS, FLOW DIAMETER:20MM, MFG:PARKER	2,00	SET	not later than 150 calendar days after PO effective date
2	223463/	VALVE,CHECK, COLORFLOW CHECK VALVE, C SERIES TYPE:9C1600S65, MAX PRESSURE: 3000 PSI, FREE FLOW IN ONE DIRECTION, FLOW RATE: 151L/MIN, CONNECTION SIZE: 1 INCH, MFG:PARKER	2,00	SET	
3	223464/	VALVE,LINEAR,DIRECTIONAL CONTROL, ERMETO DIN NON RETURN VALVE, TYPE:RHZ25SREDOMDCF, MAX PRESSURE:420BAR, CONNECTION 2:25MM, CONNECTION 1:G1A INCH, INSIDE Ø: 19MM, MFG:PARKER	2,00	SET	
4	223465/	VALVE,LINEAR,DIRECTIONAL CONTROL, ERMETO DIN NON RETURN VALVE, TYPE:RHZ12LREDOMDCF, MAX PRESSURE:400BAR, CONNECTION 2:12MM, CONNECTION 1:G3/8A INCH, INSIDE Ø: 9.5MM, MFG:PARKER	2,00	SET	
5	223466/	BREATHER, SPIN-ON AIR BREATHER, TYPE:H00834001, WEIGHT:0.96KG, FLOW RATE:1700L/MIN, WORKING TEMP:-20°C ~ +90°C, MFG:PARKER	2,00	SET	
6	223467/	CABLE,ELECTRICAL, SCK CABLE/SENSOCONTROL, TYPE:SCK-400-02-55, INDUSTRIAL CABLE, LENGTH:2M, PORT SIZE:M12 CABEL JACK; 90° ANGLED, MFG:PARKER	4,00	SET	
7	223469/	FILTER ELEMENT, FILTER PRESS AND VACUUM INDICATOR-FMU & LPS SERIES, TYPE: UT11019, INDICATOR:ELECTRICAL SW N/C, PRESS:1BAR, MAX PRESS:80BAR, PORT:G1/2 CONICAL, CNTR:PROTECTIVE PG7, V:48VDC, MFG:PARKER	2,00	SET	
8	223470/	VALVE,SAFETY RELIEF, PILOT OPERATED RELIEF VALVE, TYPE:RAH101S50, PRESSURES:350 BAR (5000 PSI), FLOWS:113 LPM (30 GPM), CAVITY SIZE:C10-2, MFG:PARKER	2,00	SET	
9	223471/	PRESSURE TRANSMITTER, SENSOCONTROL TEST POINT, TYPE:EMA3/1/4EDCF, CONNECTION SIZE:M12X1.5 TO M52X2.0 G 1/8 TO G 1.2, OPERATING PRESSURE:160 TO 400, 2321 TO 5802, 16 TO 40, MFG:PARKER	28,00	SET	
10	223472/	GAUGE,LEVEL/TEMPERATURE, PRESSURE GAUGE, TYPE:PGC0631400, THREAD SIZE: 63MM, MANOMET, CAPACITY:0-400 BAR, MFG:PARKER	4,00	SET	
11	223473/	VALVE,SAFETY RELIEF, DIRECT OPERATED PRESSURE RELIEF VALVE, TYPE: RDM2PT21SVG, GAUGE PORT: G1/4, MAX PRESSURE:350/50 BAR, PORT CONNECTION:NG06, FLOW RATE: 40L/MIN, MFG:PARKER	2,00	SET	
12	223692/	PRESSURE TRANSMITTER, PRESSURE SENSOR, TYPE:SCP03-400-34-06, WORKING PRESSURE:400 BAR, OUTPUT:4-20MA, MFG:PARKER	4,00	SET	
13	223475/	MANIFOLD, TYPE: PSH-MB-08111-B0-0-SH, HYDRAULIC POWER UNIT STACKER RECLAIMER, MFG: PARKER	2,00	SET	

 <b>PT. KOMIPO PEMBANGKITAN JAWA BALI</b> <b>PLTU TANJUNG JATI B #UNIT 3&amp;4</b> <b>REQUEST FOR QUOTATION</b>	Doc. Ref	: KPJB-0951-02
	Form No.	: KPJB-0951-02-ZZ-FM-03
	Design Div.	: Finance and Administration
	Revision No.	: 00


14	223476/	MANIFOLD, TYPE: PSHH-MB-05022-B0-0-SH, HYDRAULIC POWER UNIT STACKER RECLAIMER, MFG: PARKER	4,00	SET
15	223477/	MANIFOLD, TYPE: PSHH-MB-05021-B0-0-SH, HYDRAULIC POWER UNIT STACKER RECLAIMER, MFG: PARKER	4,00	SET
16	223693/	VALVE,SOLENOID, PROPORTIONAL VALVE, TYPE: D31FBE02CC4NKW0, 75L/MIN, MFG: PARKER	2,00	SET
17	223479/	ELECTRONIC MODULE,STANDARDISED, E-MODULE FOR PROPORTIONAL DIRECTIONAL CONTROL VALVES, TYPE: PWD00A-400, IN VOLTAGE: 18-30VDC, OPERATING CURRENT: 2.2A, CABLE LENGTH: 50M, MFG: PARKER	2,00	SET
18	104854/	VALVE,SAFETY RELIEF, HYDRAULIC SYSTEM, RDH082S50, PARKER	2,00	SET
19	104856/	VALVE,SOLENOID, D1VW002ENJW91, D1VW002ENJW, PARKER POWER 2 WATT	2,00	SET
20	104857/	VALVE,SOLENOID, MODEL: D1VW004CNJW, CURRENT RATING: 1.29A, MAX OPERATING PRESSURE:350.0 BAR, MFG: PARKER	2,00	SET

Term and Conditions:

1. The above price are included delivery cost to warehouse of PT. KPJB
2. Please mention Certificate is required at the delivery time
3. Payment will be made by Telegraphic Transfer (T/T) within forty five (45) days after invoice received, attached with delivery or work completion report issued by PT.KPJB.
4. Please mention Bank Account that will be use for payment (including Bank Name, Bank Address)
5. Please mention Name of Director

Place, [Month] [Date] [Year]  
SIGN & COMPANY STAMP

Name  
(Title)

	PT. KOMIPO PEMBANGKITAN JAWA BALI	Doc. Ref	: KPJB-0951-02
	PLTU TANJUNG JATI B #UNIT 3&4	Form No.	: KPJB-0951-02-ZZ-FM-03
	REQUEST FOR QUOTATION	Design Div.	: Finance and Administration
		Revision No.	:00

Attachment 3: RFQ No. K18940

**(KOP PERUSAHAAN/BADAN/LEMBAGA)**

**PAKTA INTEGRITAS**

Saya yang bertanda tangan di bawah ini, dalam rangka Pengadaan ..... (*diisi Nama Pengadaan*) dengan nomor ..... (*diisi nomor RFQ/PR*), pada satuan kerja PT KPJB yang dalam hal ini mewakili PT PLN (Persero) Unit Induk Pembangkitan Tanjung Jati B Jepara dengan ini menyatakan bahwa saya:

1. Akan mentaati peraturan tentang Pedoman Pengadaan Barang/Jasa di Lingkungan PT KPJB dan PT PLN (Persero), dan peraturan perundang-undangan yang terkait dengan pengadaan;
2. Tidak akan melakukan persengkokolan/pengaturan/kerjasama diantara para Peserta Pengadaan/Jasa lain dan/atau Pengguna Barang/Jasa dan/atau Pelaksana Pengadaan yang dapat mengakibatkan terjadinya persaingan usaha tidak sehat;
3. Mendukung prinsip **4 NO's** yang dijunjung tinggi oleh PT KPJB dan PT PLN (Persero) yaitu:
  - a. **No Bribery** (tidak boleh ada suap menyuap dan pemerasan)
  - b. **No Kickback** (tidak boleh ada komisi, tanda terimakasih baik dalam bentuk uang dan dalam bentuk lainnya);
  - c. **No Gift** (tidak boleh ada hadiah atau gratifikasi yang bertentangan dengan peraturan
  - d. **No Luxirious Hospitality** (tidak boleh ada penyambutan dan jamuan yang berlebihan).
4. Tidak akan melakukan komunikasi yang mengarah dan/atau melakukan praktek Korupsi, Kolusi dan Nepotisme (KKN)
5. Akan melakukan proses pengadaan secara bersih dan transparan agar menghasilkan pekerjaan sesuai ketentuan peraturan perundang-undangan yang berlaku.

Apabila saya melanggar hal-hal yang telah saya nyatakan dalam Pakta Integritas ini, saya bersedia dikenakan sanksi sesuai dengan ketentuan peraturan perundang-undangan yang berlaku.

\_\_\_\_\_ [Tempat], \_\_\_\_\_ [Tanggal]

[Tanda Tangan & Cap Perusahaan & Materai 10.000]

\_\_\_\_\_ [Nama Jelas]

\_\_\_\_\_ [Jabatan]

	PT. KOMIPO PEMBANGKITAN JAWA BALI	Doc. Ref	: KPJB-0951-02
	PLTU TANJUNG JATI B #UNIT 3&4	Form No.	: KPJB-0951-02-ZZ-FM-03
	REQUEST FOR QUOTATION	Design Div.	: Finance and Administration
		Revision No.	: 00

Attachment 4: RFQ No. K18940

**(KOP PERUSAHAAN/BADAN/LEMBAGA)**

### SURAT PERNYATAAN KEASLIAN DOKUMEN

Yang bertanda tangan di bawah ini :

Nama :

Jabatan :

Alamat :

Sehubungan dengan pekerjaan :

Judul Pekerjaan :

RFQ No. :


Menyatakan dengan sesungguhnya bahwa segala dokumen yang kami sampaikan adalah benar dan apabila dikemudian hari ditemukan bahwa dokumen – dokumen yang telah kami sampaikan tidak benar dan ada pemalsuan, maka kami bersedia dikenakan sanksi sesuai peraturan perundang – undangan yang berlaku.

\_\_\_\_\_ [Tempat], \_\_\_\_\_ [Tanggal]

[Tanda Tangan & Cap Perusahaan & Materai 10.000]

\_\_\_\_\_ [Nama Jelas]

\_\_\_\_\_ [Jabatan]

	<b>PT. KOMIPO PEMBANGKITAN JAWA BALI</b>	Doc. Ref	: KPJB-0951-02
	<b>PLTU TANJUNG JATI B #UNIT 3&amp;4</b>	Form No.	: KPJB-0951-02-ZZ-FM-03
	<b>REQUEST FOR QUOTATION</b>	Design Div.	: Finance and Administration
		Revision No.	: 00

Attachment 5: RFQ No. K18940

### Unprice Document Required

No.	Syarat Administrasi (Administration Requirement)
<b>A.</b>	
1	Asli Surat Penawaran (Original Unprice quotation) yang:
	1. Description sesuai permintaan
	2. Bertanggal (dated)
	3. Bertanda tangan dan Cap Perusahaan (Company stamped)
	4. Menyebutkan waktu pengiriman sampai gudang sesuai permintaan (Time Delivery)
2	Pengalaman Pekerjaan dengan total harga kontrak senilai minimal IDR 250.000.000 – <b>menyerahkan copy kontrak atau PO</b> (Work Experience for contract amount minimum IDR 250.000.000 – <b>submitting the copy of the contract or PO</b> )
3	Copy pembayaran pajak SSP (PPN) 3 bulan terakhir periode: June, July, August 2025 (Copy of 3 month payment tax period of: June, July, August 2025)
4	Copy of SPT Tahunan year of 2024
5	Original Pakta Integritas
6	Surat Pernyataan Keaslian Dokumen
7	Vendor participants must have registered CSMS Certificate (minimum: Low Risk Level) issued by PT. PLN (Persero) - submitting the copy of the document
<b>B.</b>	
1	Copy Surat Ijin Usaha Perusahaan – SIUP / BKPM (PMA) (copy of Business License )
2	Copy Surat Ijin Tempat Usaha – SITU / DOMISILI / HO (Copy of Domicile Certificate)
3	Copy Nomor Pokok Wajib Pajak - NPWP (Copy Tax ID number of company)
4	Copy Surat Pengukuhan Perusahaan Kena Pajak - SPPKP (Copy of Taxable Company Certificate)
5	Copy Tanda Daftar Perusahaan – TDP / NIB (Copy of Certificate Company Registration)
6	Copy Akte pendirian perusahaan/perubahan *jika ada (Deed of Incorporation)

**Note: Administration Requirement point B 1-6 is not required to be submitted if your company already registered in our SAP and the Company data submitted still valid until closing time. If any document not submitted by the suppliers or the submitted document do not meet the requirement, we will regard that the supplier fails and we will not open the price quotation document (price evaluation)**

*Catatan: Syarat Administrasi no. B 1-6 tidak perlu di kirimkan jika perusahaan anda sudah terdaftar di SAP kami dan data yang dahulu di kirimkan masih berlaku sampai dengan waktu penutupan bidding. Jika ada dokumen yang tidak diserahkan atau dokumen yang diserahkan tidak sesuai dengan persyaratan, kami akan menganggap bahwa supplier gagal dan kami tidak akan membuka dokumen penawaran harga (evaluasi harga).*



**PT. KOMPIO PEMBANGKITAN JAWA BALI  
PLTU TANJUNG JATI B #UNIT 3&4**

Doc. Ref	: KPJB-0951-02
Form No.	: KPJB-0951-02-ZZ-FM-03
Design Div.	: Finance and Administration
Revision No.	: 00

**REQUEST FOR QUOTATION**

**TERMS AND CONDITION**

Lampiran

PO NO :

Description :

**SYARAT - SYARAT DAN KONDISI**

**KETENTUAN UMUM**

Singkatan dan istilah umum :

"**Purchase Order/PO**" adalah Surat Pesanan Pembelian (*Purchase Order* atau *PO*).

"**ASET OPERATOR**" adalah PT Komipo Pembangkitan Jawa Bali (PT. KPJB)

"**PLN TJB**" adalah PT PLN (Persero) Unit Induk Pembangkitan Tanjung Jati B.

"**PPN**" adalah Pajak Pertambahan Nilai.

**1. SURAT MENYURAT**

Setiap surat menyurat harus menggunakan Kop Surat Perusahaan yang mencantumkan Nomor *Purchase Order/PO* , Nomor Surat Penawaran, Tanggal dan ditandatangani di atas meterai oleh Penyedia Barang/Jasa (oleh Direktur atau yang dikuasakan berdasarkan Anggaran Dasar Perusahaan), dan dialamatkan kepada: **ASET OPERATOR**, Procurement, Jepara.

Korespondensi antara **ASET OPERATOR** dan Penyedia Barang/Jasa dapat dilaksanakan melalui surat, faksimili, atau *e-mail* dan ditujukan kepada alamat masing-masing Pihak sebagaimana yang tercantum dalam *Purchase Order/PO*.

Salah satu Pihak dapat mengganti alamat, nomor telepon, faksimili dan/atau *E-mail* dengan memberikan pemberitahuan terlebih dahulu kepada Pihak lainnya.

**2. PROSES PENGADAAN**

Proses Pengadaan diadakan dengan sistem yang diputuskan oleh **ASET OPERATOR Procurement** dan **PLN TJB**, dimana prosedur yang berlaku yaitu sebagai berikut:

- 2.1 Penyedia Barang / Jasa yang diundang untuk Pengadaan adalah yang telah terdaftar di daftar Penyedia Barang/Jasa **ASET OPERATOR** dan telah disetujui oleh **PLN TJB** dengan diterbitkan "SAP CODE" oleh **PLN TJB**.
- 2.2 Menyerahkan Jaminan Penawaran untuk Surat Penawaran di atas Rp.500,000,000,- (Lima Ratus Juta Rupiah) dan/atau dipersyaratkan pada Undangan Pengadaan Barang / Jasa dengan nilai jaminan minimal 1% (satu persen) dan maksimal 3% (tiga persen) dari Harga Penawaran dari Penyedia Barang/Jasa termasuk PPN sesuai peraturan yang berlaku, kepada **ASET OPERATOR** dengan masa berlaku adalah 90 (Sembilan Puluh) hari kalender terhitung dari tanggal yang tertera di Surat Penawaran Harga. Jaminan Penawaran Harus diterbitkan oleh Bank sesuai dengan Daftar Penyedia Jaminan Terseleksi (DPJT) PLN yang telah disetujui oleh **ASET OPERATOR** dan/atau **PLN TJB**.
- 2.3 Penyedia Barang/Jasa wajib memenuhi persyaratan yang diminta oleh **ASET OPERATOR Procurement** dan tercantum dalam Surat Penawaran Harga, yaitu sebagai berikut:
  - 2.3.1 Jadwal Pengiriman/pekerjaan yang diajukan dalam Surat Penawaran Harga adalah dalam hitungan "**HARI KALENDER atau TANGGAL yang disepakati**".
  - 2.3.2 Sertifikat dan/atau dokumen lainnya yang dipersyaratkan dalam permintaan barang/jasa yang akan diserahkan, maka harus tercantum dalam Surat Penawaran Harga dan itu adalah "**SERTIFIKAT/DOKUMEN ASLI**", kecuali ada ketentuan dan persetujuan lain yang disepakati Para Pihak (Penyedia Barang/Jasa dan **ASET OPERATOR Procurement**).
  - 2.3.3 Harga Yang ditawarkan adalah dalam "**RUPIAH**" sesuai dengan peraturan yang berlaku, kecuali ada ketentuan dan persetujuan lain yang disepakati Para Pihak (Penyedia Barang/Jasa dan **ASET OPERATOR Procurement**).
  - 2.3.4 Surat Penawaran Harga yang diserahkan ke **ASET OPERATOR Procurement** harus menggunakan kop surat resmi perusahaan, bertanggal, bermeterai dan ditandatangani oleh Penyedia Barang/Jasa (oleh Direktur atau yang dikuasakan berdasarkan Anggaran Dasar Perusahaan).
  - 2.3.5 Masa berlaku Surat Penawaran Harga adalah 90 (Sembilan Puluh) Hari Kalender sejak tanggal Surat Penawaran Harga dibuat.
  - 2.3.6 Syarat dan Kondisi penyerahan barang/jasa adalah "**DDP Tanjung Jati B**" (*incoterms* 2000), kecuali ada ketentuan dan persetujuan lain yang disepakati Para Pihak (Penyedia Barang/Jasa dan **ASET OPERATOR Procurement**).
  - 2.3.7 Syarat dan Kondisi Pembayaran adalah 45 (empat puluh lima) Hari Kalender sejak barang/atau bukti penyelesaian pekerjaan dan dokumen lainnya yang dipersyaratkan dalam *Purchase Order/PO* lengkap diterima oleh **ASET OPERATOR** dan **PLN TJB**.
  - 2.3.8 Penyedia Barang/Jasa dipersyaratkan mencantumkan kesanggupan untuk menerbitkan "**Surat Pernyataan Jaminan/Warranty Letter**", yang menyatakan bahwa barang yang dikirimkan adalah Asli, Baru dan Tidak ada cacat. *Purchase Order/PO* lengkap diterima oleh **ASET OPERATOR** dan dapat digunakan, dan ditandatangani di atas meterai oleh Penyedia Barang/Jasa (oleh Direktur atau yang dikuasakan berdasarkan Anggaran Dasar Perusahaan). Jika dipersyaratkan dalam PO
- 2.4 Surat Penawaran Harga dan Dokumen pengadaan lainnya yang telah diterima oleh **ASET OPERATOR Procurement** adalah mutlak milik **ASET OPERATOR Procurement** dan keputusan yang dibuat oleh **ASET OPERATOR Procurement Komite** adalah mutlak dan tidak dapat diganggu gugat.
- 2.5 Adapun Syarat dan Ketentuan lainnya yang ditetapkan terpisah adalah satu kesatuan dari Syarat –Syarat dan Kondisi pada lampiran 2.

**3. PERSETUJUAN PURCHASE ORDER/PO**

Sebagai konfirmasi persetujuan Pesanan atau syarat-syarat *Purchase Order/PO*, Nomor Referensi Rekanan wajib menandatangani Surat *Purchase Order/PO* di atas meterai yang cukup pada kolom yang tersedia dan mengembalikan kepada Procurement **ASET OPERATOR**.

**3.1 PROSES PURCHASE ORDER/PO**

Proses *Purchase Order/PO* diberlakukan dalam tahap sebagai berikut:

- 3.1.1 *Purchase Order/PO* atas nama **PLN TJB** lebih besar dari Rp.500,000,000,- (Lima Ratus Juta Rupiah), maka Penyedia Barang/Jasa diwajibkan menyerahkan Jaminan Pelaksanaan ditujukan ke **PLN TJB**, bernilai minimal 5% (lima persen) dari total harga barang/ jasa yang tercantum dalam *Purchase Order/PO* termasuk PPN sesuai dengan peraturan yang berlaku.
- 3.1.2 *Purchase Order/PO* Asli yang telah lengkap ditandatangani oleh **ASET OPERATOR** atas sepengetahuan dan persetujuan **PLN TJB** terlebih dahulu, dan wajib ditandatangani di atas meterai oleh Penyedia Barang/Jasa (oleh Direktur atau yang dikuasakan berdasarkan Anggaran Dasar Perusahaan) dan dikembalikan kepada Procurement **ASET OPERATOR**.
- 3.1.3 *Aktivasi Surat Purchase Order/PO* adalah 7 (tujuh) Hari Kalender sejak *Purchase Order/PO* dikirimkan melalui surat tertulis dan/atau surat elektronik (*surell/email*) oleh Procurement **ASET OPERATOR**.



**PT. KOMIPO PEMBANGKITAN JAWA BALI  
PLTU TANJUNG JATI B #UNIT 3&4**

Doc. Ref	: KPJB-0951-02
Form No.	: KPJB-0951-02-ZZ-FM-03
Design Div.	: Finance and Administration
Revision No.	: 00

**REQUEST FOR QUOTATION**

- 3.1.4 *Jangka Waktu* berlakunya *Purchase Order/PO* ditetapkan dalam *Purchase Order/PO*, pada kolom "**Start Date**" dan "**End Date**".
- 3.1.5 Pada ketentuan *Pasal 3.1.1* dimana **ASET OPERATOR** akan mengirimkan surat "*Appointment of awarded Supplier*" melalui surat tertulis dan/atau Surat Elektronik (*surel/email*) kepada Penyedia Barang/Jasa, dan selambat-lambatnya dalam waktu 14 (empat belas) Hari Kalender setelah tanggal dikirimkan surat "*Appointment of awarded Supplier*", maka Jaminan Pelaksanaan harus diterima oleh Procurement **ASET OPERATOR**, apabila telah melewati jangka waktu yang telah ditetapkan dan pihak Penyedia Barang/Jasa belum memberikan Jaminan Pelaksanaan, maka **ASET OPERATOR** mempunyai hak membatalkan perikatan hukum (*Purchase Order/PO*) dengan Penyedia Barang/Jasa. Penyedia Barang/Jasa dianggap mengundurkan diri dan Jaminan Penawaran dicairkan tanpa syarat. Penyedia Barang/Jasa dianggap telah melakukan Wanprestasi dan akan dikenakan sanksi sesuai dengan peraturan yang berlaku di **ASET OPERATOR** dan **PLN TJB**.
- 3.2 **ASET OPERATOR** dan Penyedia Barang/Jasa sepakat dalam hal **ASET OPERATOR** membatalkan *Purchase Order/PO* maka **ASET OPERATOR** dan **PLN TJB** tanpa terkecuali dibebaskan dari segala bentuk gugatan dan laporan hukum, sanksi, ganti rugi, penggantian biaya-biaya maupun ongkos-ongkos apapun sehingga Penyedia Barang/Jasa tidak memiliki hak dan wewenang untuk menuntut pertanggungjawaban apapun lagi dari **ASET OPERATOR** dan **PLN TJB**.
- 3.3 *Purchase Order/PO* dan Ketentuan lainnya yang ditetapkan terpisah adalah satu kesatuan dari Syarat –Syarat dan Kondisi lampiran 2.

**4. JANGKA WAKTU PELAKSANAAN**

Jangka Waktu Pelaksanaan adalah Jangka Waktu yang tertera dalam *Purchase Order/PO* sesuai pada ketentuan *Pasal 3.1.4*, kecuali adanya pengakhiran atau perpanjangan berdasarkan kesepakatan Para Pihak.

**5. PERPANJANGAN WAKTU PELAKSANAAN**

Setiap perpanjangan waktu pelaksanaan akan diterbitkan Amendemen *Purchase Order/PO* dengan Jangka Waktu yang disepakati Para Pihak.

**6. PERUBAHAN PURCHASE ORDER/PO (AMENDMENT PO)**

Setiap perubahan atas *Purchase Order/PO* mengenai Masa berlaku *Purchase Order/PO*, sebagaimana ketentuan pada *Pasal 3.1.4* dan syarat-syarat dan kondisi lain hanya akan mengikat apabila disetujui secara tertulis dari **ASET OPERATOR** atas nama **PLN TJB** dengan diterbitkannya *Amendment PO* yang diterbitkan 2 (dua) rangkap yang masing - masing rangkap ditandatangani diatas meterai oleh **ASET OPERATOR** dan Penyedia Barang/Jasa.

**7. BARANG-BARANG**

- 7.1 Semua barang yang dipasok/disuplai harus sesuai dengan perincian yang tercantum dalam *Purchase Order/PO*.
- 7.2 Penyimpangan dari ketentuan-ketentuan di atas tidak diperkenankan tanpa persetujuan tertulis/tanpa *Amendment PO* dari **ASET OPERATOR**.

**8. KEMASAN**

Kemasan harus dibuat kuat (dalam wujud kayu atau karton) dan layak laut atau udara sesuai dengan standar yang berlaku bagi kemasan. Semua harga bahan kemasan telah termasuk dalam harga yang telah disetujui. Pada setiap kemasan harus dicantumkan nama barang.

**9. PEMERIKSAAN**

- 9.1 Pemeriksaan sebelum pengapalan: apabila pemeriksaan sebelum pengapalan diperlukan, maka **ASET OPERATOR** dan/atau **PLN TJB** akan melakukan pemeriksaan barang di tempat Penyedia Barang/Jasa atau tempat lain yang disetujui Para Pihak.
- 9.2 Barang akan diperiksa pada waktu penyerahan dilaksanakan setelah lengkap dengan dokumen yang dipersyaratkan pada *Purchase Order/PO*. Barang yang tidak memenuhi syarat-syarat yang ditentukan dalam *Purchase Order/PO* akan dikembalikan kepada Penyedia Barang/Jasa, dan semua biaya dan kerugian akan ditimbulkan menjadi risiko dan tanggung jawab Penyedia Barang/Jasa.

**10. SERTIFIKASI**

Sertifikat untuk barang (-barang) tertentu yang ditetapkan oleh **ASET OPERATOR** dan **PLN TJB** adalah sebagai berikut:

- Sertifikat Asal Usul Barang (*Certificate of Origin/COO*);
  - Sertifikat dari Pabrik (*Certificate of Manufacture/COM*);
  - Surat Keaslian Barang;
  - Sertifikat Hasil Uji Pabrik (*Factory Acceptance Test Certificate*);
  - Salinan Dokumen Impor Barang (*Copy Bill of Lading*);
  - Sertifikat Analisa (*Certificate of Analysis/COA*);
- ataupun dokumen-dokumen pendukung lainnya (sebagaimana dipersyaratkan khusus di *Purchase Order/PO*).

**11. PENYERAHAN**

- 11.1 Penyedia Barang/Jasa harus menyerahkan barang (-barang) dalam jangka waktu dan tempat sesuai dengan syarat-syarat yang telah ditentukan dalam *Purchase Order/PO*.
- 11.2 Dalam jangka waktu paling lambat 7 (tujuh) Hari Kalender sebelum pengiriman barang (-barang), Penyedia Barang/Jasa harus memberitahukan **ASET OPERATOR** mengenai jadwal pengiriman.
- 11.3 Waktu Penyerahan barang(-barang) dihitung efektif sejak 7 (tujuh) Hari Kalender sejak *Purchase Order/PO* dikirimkan melalui surat tertulis dan/atau Surat Elektronik (*surel/ email*) oleh Procurement **ASET OPERATOR** ditambah jangka waktu pengiriman yang tercantum pada *Purchase Order/PO* sebagaimana ketentuan pada *Pasal 3.1.5* dan lengkap disertai dengan penyerahan dokumen pendukung yang dipersyaratkan dalam *Purchase Order/PO*.

**12. DENDA SANKSI**

- 12.1 Sanksi atas pencairan Jaminan Penawaran tanpa syarat apabila Penyedia Barang/Jasa membatalkan *Purchase Order/PO* secara sepihak, tanpa persetujuan **ASET OPERATOR** dan **PLN TJB**, sebagaimana ketentuan pada *Pasal 2.2* dan *Pasal 3.1.6*. Penyedia Barang/Jasa dianggap telah melakukan Wanprestasi dan mendapatkan sanksi *blacklist* di lingkungan **ASET OPERATOR** dan **PLN TJB** minimal 2 (dua) tahun.
- 12.2 Denda atas keterlambatan menyelesaikan pekerjaan atau memasok Barang adalah setiap hari keterlambatan dikenakan 1/1000 (satu per seribu) dengan maksimal denda keterlambatan adalah 5% (lima persen) dari total nilai *Purchase Order/PO* belum termasuk PPN sesuai dengan peraturan yang berlaku dan/atau sama dengan maksimal keterlambatan pengiriman maksimal adalah 50 (lima puluh) Hari Kalender, kecuali ada kesepakatan lain antara Para Pihak. Serta melakukan pemotongan pembayaran kepada Penyedia Barang/Jasa dengan menggunakan nilai denda yang sudah ditetapkan **ASET OPERATOR** tersebut sebagai dasar pemotongan.
- 12.3 Batas maksimal Penyedia Barang/Jasa dalam keterlambatan adalah 3 (tiga) *Purchase Order/PO* dan Penyedia Barang/Jasa akan di tangguhkan ("*suspend*") atau tidak dapat turut serta dalam proses pengadaan berikutnya. Pemberian Penangguhan ("*suspend*") kepada Penyedia Barang/Jasa adalah hak mutlak **ASET OPERATOR** atas persetujuan **PLN TJB**, dan tanpa pemberitahuan resmi kepada Penyedia Barang/Jasa.
- 12.4 Penyedia Barang/Jasa tidak dapat membatalkan *Purchase Order/PO* sepihak kepada **ASET OPERATOR** dan/atau **PLN TJB**. Bila Penyedia Barang/Jasa tidak sanggup menyerahkan atau menyelesaikan pekerjaannya dalam waktu yang telah ditentukan, **ASET OPERATOR** dan/atau **PLN TJB** sebagaimana ketentuan pada *Pasal 11.3*, maka **ASET OPERATOR** memiliki hak dan wewenang penuh untuk:



**PT. KOMIPO PEMBANGKITAN JAWA BALI  
PLTU TANJUNG JATI B #UNIT 3&4**

**REQUEST FOR QUOTATION**

Doc. Ref	: KPJB-0951-02
Form No.	: KPJB-0951-02-ZZ-FM-03
Design Div.	: Finance and Administration
Revision No.	: 00

- 12.4.1 Mengenakan denda maksimal sebesar 5% (lima persen) dari Total Nilai pada *Purchase Order/PO* atau mencairkan Jaminan Pelaksanaan tanpa syarat;
- 12.4.2 Dan/ Atau memesan barang/ jasa tersebut kepada sumber lain dan bila ada kelebihan harga yang dibayarkan **ASET OPERATOR** maka Penyedia Barang/Jasa wajib menanggung kelebihan harga tersebut;
- 12.4.3 Penyedia Barang/Jasa dianggap telah melakukan Wanprestasi dan mendapatkan sanksi *black list* di lingkungan **ASET OPERATOR** dan **PLN TJB** minimal 2 (dua) tahun disertai dengan membatalkan atau mengakhiri *PO* beserta pengakhiran ikatan Kerjasama dengan Penyedia Barang/Jasa.
- 12.5 Denda atau Sanksi dapat diabaikan dan/atau dihilangkan apabila keterlambatan atas suatu Pengadaan Barang atau Jasa yang dianggap oleh **ASET OPERATOR** dan/ atau **PLN TJB** adalah dikategorikan sebagai suatu "*Force Majeure*" sebagaimana ketentuan pada Pasal 16.

**13. TAHAPAN SURAT PEMBERITAHUAN, PERINGATAN, DAN PEMUTUSAN *PURCHASE ORDER/PO* KARENA WANPRESTASI**

13.1 Peristiwa-peristiwa yang digolongkan sebagai Wanprestasi adalah:

- a. Peristiwa Wanprestasi yang mengakibatkan *Purchase Order/PO* berakhir tanpa melalui surat peringatan dari **ASET OPERATOR** terhadap Penyedia Barang/Jasa adalah sebagai berikut:
  - i. Penyedia Barang/Jasa terbukti melakukan tindak pidana antara lain adanya pemalsuan surat/dokumen, praktek korupsi, penyuapan, pemberian gratifikasi, persekongkolan, kecurangan dan pemalsuan yang berkaitan dengan proses pengadaan, *Purchase Order/PO* dan/atau pelaksanaan Pekerjaan.
  - ii. Penyedia Barang/Jasa terbukti melakukan pelanggaran atas peraturan internal **ASET OPERATOR** dan/atau **PLN TJB** terkait *fraud*.
  - iii. Berdasarkan putusan Pengadilan yang telah mempunyai kekuatan hukum tetap, Penyedia Barang/Jasa dinyatakan dalam keadaan pailit, pembubaran, likuidasi atau diberikan penundaan pembayaran hutang yang menyebabkan Penyedia Barang/Jasa tidak dapat melakukan kewajibannya berdasarkan *Purchase Order/PO*.
  - iv. Penyedia Barang/Jasa terbukti dikenakan Sanksi Daftar Hitam (*blacklist*) sebelum penandatanganan *Purchase Order/PO*.
  - v. Apabila Jaminan Penawaran dan/atau Jaminan Pelaksanaan yang diserahkan oleh Penyedia Barang/Jasa kepada **ASET OPERATOR** dan/atau **PLN TJB** selama jangka waktu *Purchase Order/PO* terbukti palsu/tidak benar.
  - vi. Setiap pernyataan yang dibuat oleh Penyedia Barang/Jasa di dalam *Purchase Order/PO* yang berkaitan dengan proses pengadaan *Purchase Order/PO* dan/atau pelaksanaan Pekerjaan terbukti tidak sah dan/atau tidak dilaksanakan oleh Penyedia Barang/Jasa.
- b. Peristiwa Wanprestasi yang mengakibatkan *Purchase Order/PO* berakhir melalui surat peringatan dari **ASET OPERATOR** terhadap Penyedia Barang/Jasa adalah sebagai berikut:
  - i. Penyedia Barang/Jasa mengalihkan Pekerjaan baik sebagian atau seluruhnya atau hak atau kewajiban yang diatur dalam *Purchase Order/PO* tanpa persetujuan tertulis dari **ASET OPERATOR**;
  - ii. Apabila denda yang diatur dalam *Purchase Order/PO* tidak dibayar oleh Penyedia Barang/Jasa kepada **ASET OPERATOR**.
  - iii. Apabila Penyedia Barang/Jasa tidak melakukan perpanjangan Jaminan Pelaksanaan sebagaimana diatur dalam *Purchase Order/PO*.
  - iv. Penyedia Barang/Jasa tidak memenuhi baik sebagian atau seluruh kewajiban sesuai ketentuan yang diatur dalam *Purchase Order/PO*.

13.2 Dalam hal terjadi Peristiwa Wanprestasi oleh Penyedia Barang/Jasa sebagaimana dimaksud Pasal 13 ayat 13.1 butir b Syarat Umum *Purchase Order/PO*, **ASET OPERATOR** berhak mengakhiri *Purchase Order/PO* dengan memberikan surat peringatan, dengan ketentuan sebagai berikut:

- a. Surat Pemberitahuan (*Notification Letter*): dikirimkan secara tertulis dan/atau melalui *Email* ke Penyedia Barang/Jasa maksimal 14 (empat belas) Hari Kalender sebelum jangka waktu pengiriman jatuh tempo yang tertera pada *Purchase Order/PO*.
- b. Surat Peringatan Resmi (*Official Warning Letter*): dikirimkan secara tertulis dan/atau melalui *Email* ke Penyedia Barang/Jasa yang mengalami keterlambatan pengiriman dengan ketentuan sebagai berikut:
  - i. Surat Peringatan Pertama (*Warning Letter 1*): 1- 10 hari setelah masa berlakunya *Purchase Order/PO* berakhir (*end date*), dan Penyedia Barang/Jasawajib merespon dalam waktu 10 hari setelah Surat Peringatan Pertama (*Warning Letter 1*) diterima.
  - ii. Surat Peringatan Kedua (*Warning Letter 2*): 21- 30 hari setelah masa berlakunya *Purchase Order/PO* berakhir (*end date*), dan Penyedia Barang/Jasawajib merespon dalam waktu 10 hari setelah Surat Peringatan Kedua (*Warning Letter 2*) diterima.
  - iii. *Warning Letter 3* ((Surat Pengakhiran/Pemutusan (*Termination Letter*)): 51 hari setelah masa berlakunya *Purchase Order/PO* berakhir (*end date*).
- c. Surat Pengakhiran/Pemutusan (*Termination Letter*): dikirimkan secara tertulis dan/atau melalui *Email* ke Penyedia Barang/Jasa setelah 2 (dua) surat pada Pasal 13.2.a dan 13.2.b di atas dikirimkan dan tidak tercapainya kesepakatan antara Para Pihak dalam penyelesaian permasalahan yang dimaksud dalam jangka waktu masa berlakunya *Purchase Order/PO*, maka secara sepihak yaitu **ASET OPERATOR** atas persetujuan **PLN TJB**, akan membatalkan *Purchase Order/PO* dengan mengirimkan Surat Pemutusan (*Termination Letter*) kepada Penyedia Barang/Jasa.
- d. Apabila Penyedia Barang/Jasa tidak menyelesaikan pekerjaan serta tidak tercapainya kesepakatan antara Para Pihak dalam penyelesaian pekerjaan yang dimaksud dalam jangka waktu masa berlakunya *Purchase Order/PO* dalam waktu sebagaimana disebutkan pada Pasal 13 ayat 13.2 butir c, maka **ASET OPERATOR** berhak mencairkan Jaminan Pelaksanaan Penyedia Barang/Jasa pada periode berjalan, dan mengakhiri *Purchase Order/PO* secara sepihak.

13.3 Dalam hal Penyedia Barang/Jasa telah melakukan pemulihan atau perbaikan sebagaimana dimaksud pada bab ini, dan pemulihan atau perbaikan tersebut disetujui oleh **ASET OPERATOR** maka peringatan tertulis yang telah diterbitkan tersebut tidak akan diperhitungkan sebagai pemberian peringatan yang berkelanjutan atau tidak berlaku kumulatif pada pemberian peringatan berikutnya.

13.4 Atas setiap pengakhiran dari *Purchase Order/PO*, seluruh kewajiban-kewajiban masing-masing Pihak berdasarkan *Purchase Order/PO* wajib berhenti, kecuali:

- a. Sehubungan dengan kewajiban-kewajiban pembayaran yang ditimbulkan dari tindakan-tindakan yang diambil sebelum pengakhiran tersebut (termasuk namun tidak terbatas pada hak normatif Pekerja Penyedia Barang/Jasa);
- b. Sebagaimana ditentukan lain dalam *Purchase Order/PO*;
- c. Bahwa ketentuan terkait Jaminan Pelaksanaan akan tetap berlaku walaupun *Purchase Order/PO* telah diakhiri; dan/atau
- d. Pengakhiran tersebut tidak akan mengurangi setiap hak atas ganti rugi atau setiap perbaikan lainnya yang mungkin dimiliki oleh masing-masing pihak berdasarkan *Purchase Order/PO*.

13.5 Dalam hal terjadi Peristiwa Wanprestasi Penyedia Barang/Jasa, maka Penyedia Barang/Jasa akan dikenakan hukuman/denda sesuai ketentuan pada *Purchase Order/PO*.

13.6 **ASET OPERATOR** akan memberlakukan hukuman daftar hitam (*blacklist*) bagi setiap pengakhiran *Purchase Order/PO* yang disebabkan karena wanprestasi Penyedia Barang/Jasa sebagaimana diatur lebih lanjut dalam ketentuan yang berlaku pada **ASET OPERATOR**.

13.7 Terhadap pengakhiran *Purchase Order/PO*, Para Pihak sepakat untuk tidak memberlakukan ketentuan Pasal 1266 Kitab Undang-Undang Hukum Perdata.

13.8 Akibat-akibat Pemutusan *Purchase Order/PO*:

- a. **ASET OPERATOR** dan/atau **PLN TJB** dibebaskan dari segala tuntutan hutang-hutang Penyedia Barang/Jasa kepada pihak ketiga yang harus ditanggung oleh Penyedia Barang/Jasa;
- b. **ASET OPERATOR** dan Penyedia Barang/Jasa segera mengadakan pemeriksaan bersama yang dituangkan dalam Berita Acara Pemeriksaan Pekerjaan dan/atau *Good Receipt* (GR) dan/atau *Join Inspection* (JI) yang meliputi beberapa prestasi yang telah selesai dikerjakan oleh Penyedia Barang/Jasa. Apabila Penyedia Barang/Jasa tidak bersedia mengadakan pemeriksaan bersama, maka **ASET OPERATOR** akan mengadakan



**PT. KOMPIO PEMBANGKITAN JAWA BALI  
PLTU TANJUNG JATI B #UNIT 3&4**

**REQUEST FOR QUOTATION**

Doc. Ref	: KPJB-0951-02
Form No.	: KPJB-0951-02-ZZ-FM-03
Design Div.	: Finance and Administration
Revision No.	: 00

- pemeriksaan terakhir dan hasilnya dianggap sebagai hasil pemeriksaan bersama;
- c. Penyedia Barang/Jasa hanya berhak mendapatkan pembayaran sesuai kemajuan pekerjaan yang telah dilaksanakan dan disetujui **ASET OPERATOR**. Peralatan dan bahan-bahan yang belum dipergunakan tidak termasuk dalam penilaian kemajuan pekerjaan;
  - d. **ASET OPERATOR** akan mengambil alih pekerjaan untuk diselesaikan dengan *Purchase Order/PO* lain atau dengan cara lain;

**14. HARGA**

- 14.1 Harga yang tercantum dalam *Purchase Order/PO* ini adalah tetap, tidak berubah dan mengikat.
- 14.2 Bagi Pengusaha Kena Pajak ("PKP") harga yang tercantum dalam *Purchase Order/PO* tidak termasuk PPN sesuai dengan peraturan yang berlaku. PPN harus dinyatakan terpisah dari harga barang(-barang) yang dipesan.

**15. JAMINAN PENAWARAN DAN JAMINAN PELAKSANAAN**

Jaminan dipersyaratkan untuk Pengadaan sebagai berikut :

- 15.1 Jaminan Penawaran adalah bernilai minimal 1% (satu persen) maksimal 3% (Tiga persen) dari Total Nilai Perkiraan Sendiri (HPS) atau Surat Penawaran Harga dari Penyedia Barang/Jasa termasuk PPN sesuai dengan peraturan yang berlaku, untuk nilai Penawaran lebih besar dari Rp.500,000,000,- (lima ratus juta rupiah), sebagaimana ketentuan pada Pasal 2.2 .
- 15.2 Jaminan Pelaksanaan adalah bernilai minimal 5% (lima persen) dari Total Nilai pada *Purchase Order/PO* termasuk PPN sesuai dengan peraturan yang berlaku untuk nilai Pembelian lebih besar dari Rp.500,000,000,- (lima ratus juta rupiah), sebagaimana ketentuan pada Pasal 3.1.1 di atas. Dengan ketentuan masa berlaku Jaminan Pelaksanaan adalah sebagaimana ketentuan pada Pasal 3.1.4 ditambah sekurang-kurangnya 50 (Lima Puluh Hari) Hari Kalender.
- 15.3 Jaminan yang disertakan harus mengikuti persyaratan yang diminta oleh **ASET OPERATOR** dan/atau **PLN TJB** dengan ketentuan sebagai berikut :
  - 15.3.1 Mengikuti format yang sudah dibakukan oleh **ASET OPERATOR** dan/ atau **PLN TJB**.
  - 15.3.2 Menggunakan mata uang dalam "Rupiah", kecuali ada ketentuan dan persetujuan lain yang disepakati Para Pihak (Penyedia Barang/ Jasa dan **ASET OPERATOR** Procurement).
  - 15.3.3 Harus diterbitkan oleh Bank sesuai dengan Daftar Penyedia Jaminan Terseleksi (DPJT) PLN yang telah disetujui oleh **ASET OPERATOR** dan/atau **PLN TJB**.
- 15.4 Jaminan Pelaksanaan diserahkan kepada **ASET OPERATOR** maksimal 14 (empat belas) Hari Kalender setelah "Surat Penunjukan Pemenang / *Appointment of Awarded Supplier*" dikirimkan melalui surat tertulis dan/atau Surat Elektronik (Surel/ *Email*) oleh **ASET OPERATOR** kepada Penyedia Barang/Jasa, sebagaimana ketentuan pada Pasal 3.1.5.
- 15.5 Asli dari Jaminan akan dikembalikan ke Penyedia Barang/Jasa apabila semua kewajiban dari Penyedia Barang/Jasa telah dinyatakan selesai oleh **ASET OPERATOR** atas persetujuan **PLN TJB**.
- 15.6 Jaminan dapat dimungkinkan untuk diperpanjang masa berlakunya atas permintaan dari **ASET OPERATOR** dan/atau **PLN TJB** kepada Penyedia Barang/Jasa.

**16. FORCE MAJEURE**

- 16.1 Peristiwa, kejadian atau keadaan berikut ini adalah *Force Majeure*: Kehendak Tuhan (*Act of God*) meliputi namun tidak terbatas pada gempa bumi, dari banjir, epidemi, kebakaran, perang, huru-hara, pemogokan dan/atau pemberlakuan peraturan pemerintah yang mengatur atau berhubungan dengan pelaksanaan/ pengiriman di dalam *Purchase Order/PO*.
- 16.2 Dalam hal terjadi suatu peristiwa, kejadian atau keadaan *Force Majeure*, Penyedia Barang/Jasa wajib memberitahukan secara tertulis dan/atau *email* dengan melampirkan bukti-bukti dari instansi yang berwenang kepada **ASET OPERATOR** selambat-lambatnya 3 (tiga) hari sejak terjadinya suatu peristiwa, kejadian atau keadaan *Force Majeure*.
- 16.3 Dalam hal pemberitahuan sebagaimana ketentuan Pasal 16.2 di atas terlampaui atau tidak dilaksanakan maka Para Pihak sepakat bahwa kejadian tersebut bukan merupakan keadaan *Force Majeure*.
- 16.4 Baik Penyedia Barang/Jasa maupun **ASET OPERATOR** dan **PLN TJB** dibebaskan dari setiap dan semua tanggung jawab yang timbul sebagai akibat terjadinya suatu peristiwa, kejadian atau keadaan *Force Majeure*.

**17. TUNTUTAN DARI PIHAK KETIGA**

Penyedia Barang/Jasa harus membebaskan dan melindungi **ASET OPERATOR** dan **PLN TJB** dari segala tuntutan dari pihak ketiga yang timbul atau akan timbul sehubungan dengan *Purchase Order/PO*.

**18. GARANSI (Apabila Dipersyaratkan di dalam *Purchase Order/PO*)**

Penyedia Barang/Jasa menjamin ke **ASET OPERATOR** dan/ atau **PLN TJB**, bahwa barang-barang yang dikirim sesuai dengan spesifikasi yang disepakati sebagaimana ketentuan pada Pasal 2.3.8. Barang tidak cacat atau rusak material atau teknis, baru (bukan barang bekas pakai) dan digaransi oleh Pabrik dan/atau Penyedia Barang/Jasa. Garansi harus berlaku selama jangka waktu 18 (delapan belas) bulan sejak tanggal pengiriman barang atau 12 (dua belas) bulan sejak tanggal pemasangan atau operasi awal atas barang ("**Masa Garansi**"). Apapun yang terjadi terlebih dahulu dalam Masa Garansi, ditemukan kerusakan atau kecacatan barang, **ASET OPERATOR** berkewajiban untuk memberitahukan secara tertulis dan/atau melalui *email* atas hal tersebut kepada Penyedia Barang/Jasa. Dan dalam waktu 3 x 24 jam setelah diterimanya pemberitahuan tersebut, Penyedia Barang/Jasa wajib memperbaiki barang yang cacat atau rusak tersebut, dan apabila barang tidak bisa diperbaiki dalam jangka waktu paling lambat 30 (tiga puluh) Hari Kalender, maka Penyedia Barang/Jasa harus mengganti barang yang rusak tersebut dengan barang baru dengan kualitas dan spesifikasi yang sama tanpa ada penambahan biaya apapun dari **ASET OPERATOR**.

**19. TAGIHAN**

Untuk melakukan penagihan, Penyedia Barang/Jasa harus memenuhi syarat-syarat penagihan dengan melengkapi dokumen-dokumen antara lain sebagai berikut:

- 19.1 Surat Permohonan Pembayaran: 1 (satu) rangkap Asli
- 19.2 Kwitansi : 3 (tiga) rangkap, 1 (satu) rangkap bermeterai cukup dan 2 (dua) rangkap lainnya tanpa meterai .
- 19.3 Invoice : 3 (tiga) rangkap, 1 (satu) rangkap bermeterai cukup dan 2 (dua) rangkap lainnya tanpa meterai.
- 19.4 Faktur Pajak : 2 (dua) rangkap.
- 19.5 Berita Acara Penyelesaian Pekerjaan (BAPK) dan/atau *Goods Receipt* dan/atau *Joint Inspection* : 1 (satu) rangkap Asli.
- 19.6 Berita Acara Serah Terima (BAST) barang/jasa/pekerjaan dan/atau *Minutes Of Verification (MOV)*: 1 (satu) rangkap Asli.
- 19.7 NPWP dan SPPKP : 1 (satu) rangkap *Copy*.
- 19.8 Sertifikat Asal Barang dan/atau Sertifikat Manufaktur: 1 (satu) asli dan/atau 1 (satu) *Copy* (Apabila dipersyaratkan pada *Purchase Order/PO*).
- 19.9 Surat Jaminan/Garansi yang menyatakan masa garansi barang adalah 18 (delapan belas) bulan sejak pengiriman atau 12 (dua belas) bulan sejak instalasi : 1 (satu) asli dan 2 (dua) *Copy* (Apabila dipersyaratkan pada *Purchase Order/PO*).
- 19.10 Jaminan Pelaksanaan dan Surat Konfirmasi keabsahan Jaminan Pelaksanaan : 1 (satu) rangkap *Copy* (Apabila dipersyaratkan pada *Purchase Order/PO*).
- 19.11 SIUP/NIB dan SIUJK : 1 (satu) rangkap *Copy* (Apabila ada atau apabila dipersyaratkan pada *Purchase Order/PO*)



**PT. KOMIPO PEMBANGKITAN JAWA BALI  
PLTU TANJUNG JATI B #UNIT 3&4**

**REQUEST FOR QUOTATION**

Doc. Ref	: KPJB-0951-02
Form No.	: KPJB-0951-02-ZZ-FM-03
Design Div.	: Finance and Administration
Revision No.	: 00

19.12 Syarat-syarat lain yang belum tercantum sebagaimana poin-poin diatas namun dipersyaratkan khusus pada *Purchase Order / PO* wajib dipenuhi oleh Penyedia Barang/Jasa.

(Persyaratan penagihan terlampir di lampiran "Tata Cara Penagihan")

**20. PEMBAYARAN**

Kecuali ditentukan lain dalam *Purchase Order/PO* :

- 20.1 Pembayaran akan dilakukan pada 45 (empat puluh lima) Hari Kalender setelah barang/ Jasa dinyatakan diterima dengan Bukti Asli *Goods Receipt/ Completion Work*, dan dokumen-dokumen penagihan telah diterima dengan baik, lengkap dan benar.
- 20.2 Pembayaran akan dilakukan melalui bank transfer.

**21. LAIN - LAIN**

- 21.1 Syarat-syarat umum ini berlaku sah dan mengikat, kecuali ada ketentuan lain yang tertera pada *Purchase Order/PO*.
- 21.2 Bilamana **ASET OPERATOR** serta Penyedia Barang/Jasa menandatangani kesepakatan tambahan sebagai satu kesatuan dari *Purchase Order/PO* dan ternyata menimbulkan pertentangan dengan klausul-klausul di dalam *Purchase Order/PO* maka **ASET OPERATOR** dan Penyedia Barang/Jasa sepakat akan selalu menafsirkan dengan cara memilih, mematuhi dan menerapkan klausul yang lebih menguntungkan **ASET OPERATOR** semata.
- 21.3 **ASET OPERATOR** dan/atau **PLN TJB**, setiap saat memiliki hak eksklusif untuk melakukan evaluasi berkaitan dengan kinerja, kepatuhan atau hasil pelaksanaan kewajiban oleh Penyedia Barang/Jasa, dimana hasil evaluasi tersebut akan disampaikan kepada Penyedia Barang/Jasa dalam bentuk pernyataan tertulis.
- 21.4 Evaluasi tersebut dilakukan dalam rangka menjamin keberlangsungan PLTU Tanjung Jati B Jepara sehingga hasil evaluasi sebagaimana dimaksud menjadi dasar bagi **ASET OPERATOR** dan/atau **PLN TJB** untuk mengkaji ulang status serta jangka waktu *Purchase Order/PO* dan/atau penentuan status Penyedia Barang/Jasa dalam Daftar Hitam Penyedia Barang/Jasa **ASET OPERATOR** dan/atau **PLN TJB**.
- 21.5 *Purchase Order/PO* dibuat, diatur dan ditafsirkan sesuai dengan hukum Negara Republik Indonesia.
- 21.6 Jika terjadi perselisihan yang tidak mendapatkan solusi maka **ASET OPERATOR** dan Penyedia Barang/Jasa sepakat untuk dapat melakukan pengakhiran *Purchase Order/PO* dan tidak memberlakukan ketentuan Pasal 1266 Kitab Undang-undang Hukum Perdata.
- 21.7 Syarat-syarat dan kondisi ini dibuat dalam Bahasa Indonesia dan Bahasa Inggris. Dalam hal adanya inkonsistensi atau penafsiran yang berbeda antara versi Bahasa Indonesia dan versi Bahasa Inggris, versi Bahasa Indonesia dari Syarat-syarat dan kondisi ini akan berlaku dan versi Bahasa Inggris harus dianggap secara otomatis diubah (perubahan mana berlaku sejak tanggal ditandatanganinya versi bilingual ini) untuk menjadikan bagian yang relevan dari versi Bahasa Inggris sesuai dengan bagian yang relevan dari versi Bahasa Indonesia.
- 21.8 **ASET OPERATOR** berhak melakukan Audit di Waktu tertentu kepada rekanan Penyedia Barang/Jasa, Proses pengaudit dilakukan oleh **ASET OPERATOR** didampingi tim Auditor yang ditunjuk **ASET OPERATOR**.

**KETENTUAN MENYANGKUT LINGKUNGAN, KESEHATAN, DAN KESELAMATAN KERJA**

**1. STANDART KESELAMATAN UNTUK BAHAN BAHAN YANG BERACUN**

- 1.1 Penyedia Barang/Jasa harus memberikan daftar data keselamatan material - material (MSDS) untuk seluruh *chemical*, pelumas, lem, cairan, pembersih dan bahan bahan lainnya yang berpotensi beracun yang rekanan akan gunakan dalam pelaksanaan pekerjaan.
- 1.2 Penyedia Barang/Jasa harus mengikuti syarat - syarat untuk penyimpanan, penanganan dan pembuangan material termasuk syarat - syarat untuk Peralatan Perlindungan Personal dan peralatan Pernafasan (RPE) yang ditentukan oleh **ASET OPERATOR**.
- 1.3 Setiap Material yang mengandung zat - zat yang berpotensi beracun yang ada di *Site* yang tidak sesuai dengan persyaratan MSDS dan belum disetujui oleh **ASET OPERATOR**, harus segera dihilangkan atau dipindahkan dari *site* oleh Penyedia Barang/Jasa sampai persetujuan tersebut diperoleh.

**2. PURCHASE REQUISITION JASA/SERVICE**

- 2.1 Dokumen Analisa Kerja Aman (*Job Safety Analysis / JSA*) atau dokumen identifikasi bahaya lainnya yang terkait dengan Jasa.
- 2.2 Prosedur kerja aman / instruksi kerja dan/atau dokumen EHS lainnya yang terkait dengan Jasa.
- 2.3 Surat keterangan sehat dari dokter untuk personel yang terkait dengan jasa.
- 2.4 Foto *copy* Sertifikat kompetensi untuk personel yang terkait dengan jasa.
- 2.5 Foto *copy* Sertifikat Kelayakan atas Peralatan Angkat dan Angkut yang masih "VALID" yang terkait dengan Jasa.
- 2.6 Foto *copy* Surat Keterangan Catatan Kepolisian (SKCK) dan kartu identitas (Kartu Tanda Penduduk/KTP atau Paspor) masih berlaku untuk lampiran Formulir *Request ID Card*.
- 2.7 Foto *copy* Surat Ijin Mengemudi (SIM) yang masih berlaku untuk pengendara mobil perusahaan untuk lampiran formulir "*Vehicle Gate Pass Request*".
- 2.8 Foto *copy* surat KIR yang masih berlaku untuk kendaraan operasional kategori tertentu untuk lampiran formulir "*Vehicle Gate Pass Request*".
- 2.9 Surat pernyataan dari Manajemen perusahaan bahwa akan mematuhi peraturan perundangan terkait dengan Lingkungan dan
- 2.10 Keselamatan, Kesehatan Kerja (LK3), salah satunya seperti berikut :
  - 2.10.1 Menyediakan Alat Pelindung Diri (APD) untuk seluruh karyawan yang standard dan sesuai
  - 2.10.2 Bertanggung jawab atas limbah/sampah yang dihasilkan oleh pekerjaan jasa tersebut serta selalu menjaga kerapian dan kebersihan area kerja.
  - 2.10.3 Membuat "Surat Pernyataan" bahwa perusahaan tidak mencemari lingkungan
  - 2.10.4 Melampirkan Sertifikat ISO 14001 dan Sertifikat PROPER yang dimiliki (apabila dipersyaratkan dalam RFQ & *Purchase Order/PO*)

**3. PURCHASE REQUISITION BARANG**

Menyediakan dokumen yang terkait dengan persyaratan Lingkungan, Keselamatan dan Kesehatan Kerja (LK3), seperti:

- 3.1 Lembar Data Keselamatan Bahan / LDKB (*Material Safety Data Sheet/MSDS*) untuk Bahan Beracun dan Berbahaya (B3), seperti: bahan kimia/resin/oli/grease/dll.
- 3.2 Petunjuk Pengoperasian secara aman (*Safety Operating Manual*) untuk peralatan/mesin/alat kerja/ dll.
- 3.3 Persyaratan penyimpanan serta penanganan secara manual.
- 3.4 Atau dokumen lainnya yang terkait dengan persyaratan dan perundangan Lingkungan, Keselamatan & Kesehatan Kerja (LK3).

**4. KETENTUAN MENYANGKUT KETENAGA KERJAAN**

Berikut persyaratan dari HRD yaitu sebagai berikut :

- 4.1 *Copy* sertifikat kepesertaan perusahaan di BPJS Ketenagakerjaan.
- 4.2 *Copy* kartu kepesertaan BPJS Ketenagakerjaan dari setiap karyawan yang dipekerjakan.
- 4.3 Ijin Operasional dari Disnaker Propinsi Jawa Tengah Cq. Disnaker Jepara Untuk pekerjaan yang di alih-daya kan (*Outsource*).
- 4.4 Surat Pemberitahuan ke Disnaker Jepara untuk pekerjaan jasa pemborongan.
- 4.5 *Copy* Perjanjian kerja antara perusahaan dengan masing-masing karyawan.