



Aanwijzing Result of RFQ NO: K18800

Day / Date : Tuesday, November 25, 2025

Time : 10.00

Venue : Zoom Meeting

Administration:

Before:	After:
---------	--------

Technical:

Before:	After:
---------	--------

Note:


1. Quotation shall be submitted in two sealed envelopes separately, one for priced quotation and another for unpriced, not later than 11.00 WIB, **December 11, 2025**
2. Delivery Time: not later than **April 1, 2026**
3. Copy Mill Certificate and Surat Asal Usul are **required at the delivery time.**
4. The others clauses, terms and conditions of this TOR & RFQ No. K18800 that not specified in this MOM of aanwijzing and not against this MOM of aanwijzing still remains unchanged until the parties decided differently.

Attendance List:

NO.	NAME	COMPANY / POSITION	Signature
1	IKHSAN	PT. KPJB	BY ZOOM
2	FIRDAUS	PT. KPJB	BY ZOOM
3	FIRMAN	CV. UTAMA WIRA INDOTEKNIK	BY ZOOM
4	TIKA	PT. GAMKONORA PERMATA TEKNINDO	BY ZOOM
5	RICKY	PT. TJOKRO BERSAUDARA GRESIK	BY ZOOM

Attachment:

1. Term of Reference (Sootblower & Walldeslagger)
2. Term of Reference (Packing Set for 1R/L-2R/L)
3. Drawing

	PT. KOMIPO PEMBANGKITAN JAWA BALI PLTU TANJUNG JATI B UNIT 3&4	Doc. Ref	: KPJB-0951-02
		Form No.	: KPJB-0951-02-ZZ-FM-16
	TERM OF REFERENCE	Design Div.	: Finance and Administration
		Revision No.	: 00

1. Background

The spare parts will be provided to equipment as follow:

Name : SOOTBLOWER & WALLDESLAGGER

Brand : -

2. Spare Part Data

2.1. System : SOOTBLOWING SYSTEM

2.2. Equipment : SOOTBLOWER & WALLDESLAGGER

2.3. Spare Part Group :

Overhaul

PM & PdM

Run to Failure

Strategic Parts


Strategic Equipment

2.4. Usage Plan : SPARE PARTS WILL BE INSTALLED AFTER DELIVERY & GOOD RECEIPT IN KPJB WARE HOUSE.


2.5. Description :

There're 22 items, we would like to request to purchase as spare part. The items are:

NO	Item ID	DESCRIPTION	QTY	UNIT	REMARK
1	218223	PLATE,SURFACE, CARRIAGE COVER PLATE GASKET, SQUARE, SYMETRICAL 6 HOLE R: 5MM L: 114MM & W: 101MM, OUT: 222x134MM, IN: 173X83MM, MATERIAL: PAPER, THICKNESS: 0.5MM (REF TO DWG NO: KPJB-AI- Y-0004)	50	PC	
2	218543	SHIM, BLUE, BEARING RETAINER (LANCE DRIVE SHAFT), MATERIAL: POLYETHYLENE, THICKNESS: 0.10 MM (REF TO DWG NO: KPJB-AI-Y- 0005)	50	PC	
3	215299	SHIM, TRANSPERENT, BEARING CARRIER, MATERIAL: POLYETHYLENE, THICKNESS: 0.20 MM (REF TO DWG NO: KPJB-AI-Y- 0009)	50	PC	
4	218544	SHIM, YELLOW, BEARING RETAINER (LANCE DRIVE SHAFT), MATERIAL: POLYETHYLENE, THICKNESS: 0.50 MM (REF TO DWG NO: KPJB-AI-Y-0007)	50	PC	
5	218229	SHIM, GEAR CASE SHIM, MATERIAL: PTFE, THICKNESS: 0.50 MM (REF TO DWG NO: KPJB-AI-Y- 0011)	55	PC	
6	100014	GASKET, SIZE: 88x105x0.8 MM, MATERIAL: SS304 (REF TO DWG NO: KPJB-AI-Y-0017)	60	PC	
7	218546	GASKET, CARRIAGE LANCE HUB COVER PLATE GASKET, MATERIAL: PAPER, THICKNESS: 0.46 MM (REF TO DWG NO: KPJB-AI-Y-0014)	50	PC	

	PT. KOMIPO PEMBANGKITAN JAWA BALI PLTU TANJUNG JATI B UNIT 3&4	Doc. Ref	: KPJB-0951-02
		Form No.	: KPJB-0951-02-ZZ-FM-16
TERM OF REFERENCE		Design Div.	: Finance and Administration
		Revision No.	: 00

NO	Item ID	DESCRIPTION	QTY	UNIT	REMARK
8	218547	GASKET, CARRIAGE BEARING RETAINER GASKET, MATERIAL: PAPER, THICKNESS: 0.50 MM (REF TO DWG NO: KPJB-AI-Y-0013)	290	PC	
9	218541	SHIM, BLUE, BEARING CARRIER, MATERIAL: POLYETHYLENE, THICKNESS: 0.10 MM (REF TO DWG NO: KPJB-AI-Y-0008)	50	PC	
10	218222	SHIM, TRANSPERENT, BEARING RETAINER (LANCE DRIVE SHAFT), MATERIAL: POLYETHYLENE, THICKNESS: 0.20 MM (REF TO DWG NO: KPJB-AI-Y-0006)	50	PC	
11	218542	SHIM, YELLOW, BEARING CARRIER, MATERIAL: POLYETHYLENE, THICKNESS: 0.50 MM (REF TO DWG NO: KPJB-AI-Y-0010)	50	PC	
12	221155	SHIM, BEARING RETAINER (WORM SHAFT), THICKNESS: 0.20 MM, REF TO DWG NO: KPJB-AI-Y-0020	50	PC	
13	221156	SHIM, BEARING RETAINER (WORM SHAFT), MATERIAL: PTFE, THICKNESS: 0.10 MM (REF TO DWG NO: KPJB-AI-Y-0019)	50	PC	
14	221157	SHIM, BEARING RETAINER (WORM SHAFT), MATERIAL: PTFE, THICKNESS: 0.50 MM (REF TO DWG NO: KPJB-AI-Y-0021)	50	PC	
15	217295	LUBRICATING OIL, GEAR, GEAR, OIL LEVELER (IK-545/IK-525) (REF TO DWG NO: KPJB-AI-Y-0015)	50	PC	
16	217294	WASHER, LOCK, BEARING LOCK WASHER, (IK-545/IK-525), MATERIAL: A-36 (REF TO DWG NO: KPJB-AI-Y-0016)	50	PC	
17	219996	GASKET, HOUSING GASKET (CHANGE GEAR), MATERIAL: PAPER (REF TO DWG NO: KPJB-AI-Y-0012)	50	PC	
18	220002	PACKING ASSEMBLY, PACKING, VALVE, VALVE STEM PACKING, 600 SERIES, IK-525/545, MATERIAL: FLEXIBLE GRAPHITE (REF TO DWG NO: KPJB-AI-Y-0018)	50	PC	
19	218227	SHIM, IR3D/Z, MATERIAL: POLYETHYLENE, THICKNESS: 0.4 MM (REF TO DWG NO: KPJB-AI-Y-0022)	55	PC	
20	206562	PIN, DRIVE PIN, IR3D/Z, OD: 18.5 MM, MATERIAL: 1Cr18Ni9Ti (REF TO DWG NO: KPJB-AI-Y-0023)	150	EA	
21	220004	PACKING ASSEMBLY, PACKING, VALVE, VALVE STEM PACKING, 600 SERIES, IR3D/Z, MATERIAL: FLEXIBLE GRAPHITE (REF TO DWG NO: KPJB-AI-Y-0024)	55	PC	

	PT. KOMIPO PEMBANGKITAN JAWA BALI PLTU TANJUNG JATI B UNIT 3&4	Doc. Ref	: KPJB-0951-02
		Form No.	: KPJB-0951-02-ZZ-FM-16
TERM OF REFERENCE		Design Div.	: Finance and Administration
		Revision No.	: 00

NO	Item ID	DESCRIPTION	QTY	UNIT	REMARK
22	220864	GASKET, GASKET SPIRAL WOUND, SEALING ELEMENT (GRAPHITE, 98x120x5MM), OUTER RING (A105 GRADE B, 120X133X3MM) ASME B16.20 (REF TO DWG NO: KPJB-AI-Y-0025)	110	PC	

3. CSMS RISK Level:

- 1. Low
- 2. Moderate
- 3. High
- 4. Very High
- 5. Extreme

4. Bidder Qualification

4.1. -

5. Delivery of material and/or services

5.1. All materials should on stock in KPJB's Warehouse, PLTU Tanjung Jati B Unit 3&4, Jepara, Central Java on **1 April 2026**.

6. Requirement of Documents

Within delivery the materials, supplier should submit documents as follow:

- 6.1. Copy Mill Certificate.
- 6.2. Surat Asal Usul
- 6.3. Warranty letter for 1 year from Supplier.

7. Technical Specification

- 7.1. All of technical specification (material, dimension and etc) should be comply to determined specification, should be new 100%, no defect, match and can be used properly, following attached drawing.
- 7.2. In the case PT KPJB decline the delivered material, supplier should replace the material. If supplier can't replace it, they will be penalized in accordance to General Term & Condition (GTC) of the PO.

8. Acceptance Criteria

- 8.1. Delivery time is complied.
- 8.2. All delivered materials are accordance to PO requirement, specification and condition of the TOR.
- 8.3. All of required document are fulfilled.

9. Standard of Quality

Quality of the material and/or services should comply with standard, code, manufacturer specification and user's requirement. (*or determined by user*).

10. Warranty


Generally if there isn't mentioned at other clause, supplier should warrant the material for 1 year after material being receiving by PT. KPJB.




11. Drawing

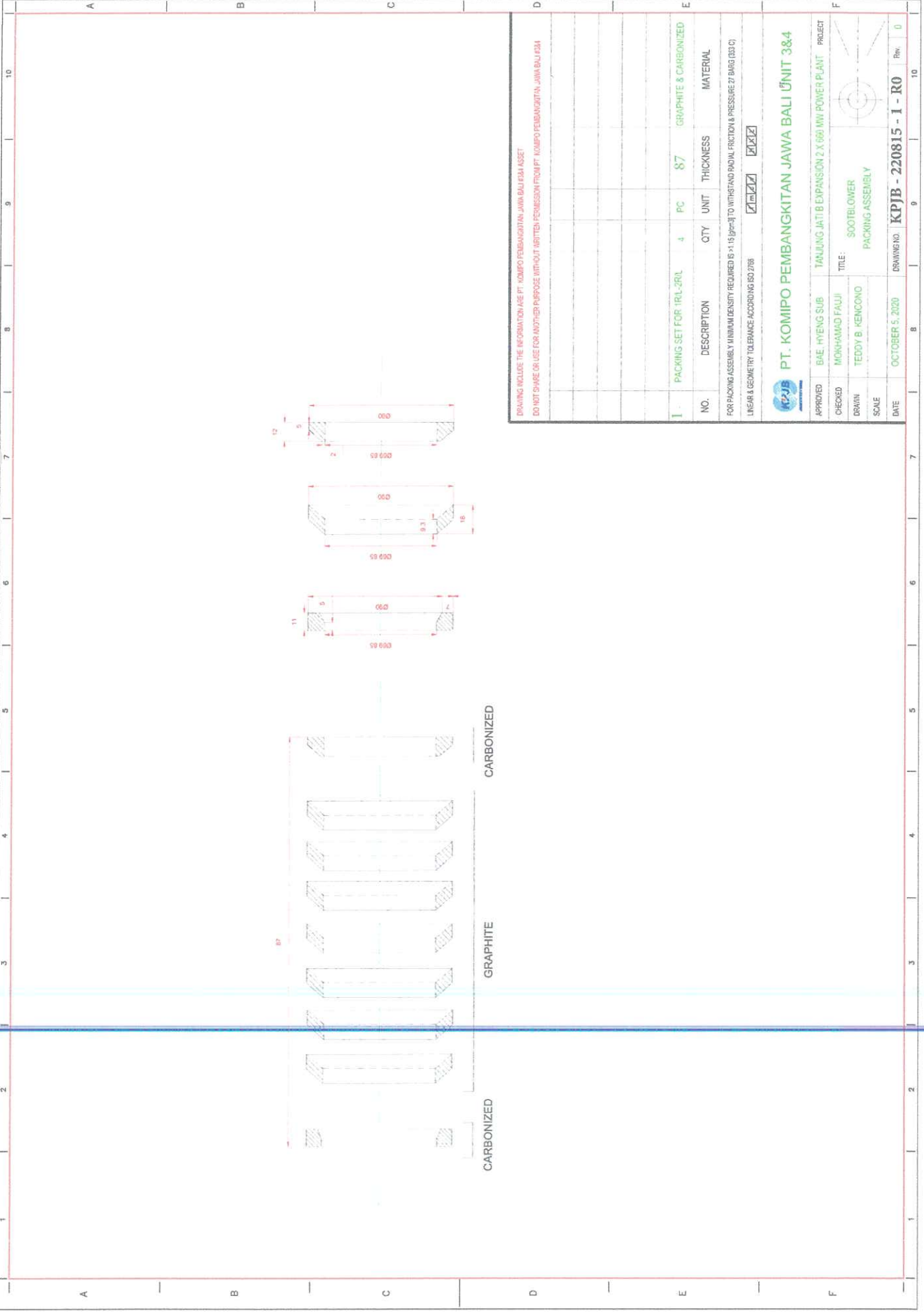
Can be seen in the attachment

12. Others

- 12.1. Aanwijzing process is required.

	PT. KOMIPO PEMBANGKITAN JAWA BALI PLTU TANJUNG JATI B UNIT 3&4	Doc. Ref	: KPJB-0951-02
		Form No.	: KPJB-0951-02-ZZ-FM-16
	TERM OF REFERENCE	Design Div.	: Finance and Administration
		Revision No.	: 00

Prepared by	Checked by	Approved by
		
<u>Abdillah Firdaus</u>	<u>Hermawan</u>	<u>Lim, Hyung Chul</u>
Date : 19-August-2025	Date : 19-August-2025	Date : 19-August-2025



DRAWING INCLUDE THE INFORMATION ARE PT. KOMIPO PEMBANGKITAN JAWA BALI KISA ASSET
 DO NOT SHARE OR USE FOR ANOTHER PURPOSE WITHOUT WRITTEN PERMISSION FROM PT. KOMIPO PEMBANGKITAN JAWA BALI KISA

NO.	DESCRIPTION	QTY	UNIT	THICKNESS	MATERIAL
1	PACKING SET FOR 1PRL-2RL	4	PC	87	GRAPHITE & CARBONIZED

FOR PACKING ASSEMBLY MINIMUM DENSITY REQUIRED IS $\times 15$ (g/cm³) TO WITHSTAND RADIAL FRICTION & PRESSURE 27 BAR (330 C)
 LINEAR & GEOMETRY TOLERANCE ACCORDING ISO 2768 m Z Z



PT. KOMIPO PEMBANGKITAN JAWA BALI UNIT 3&4

APPROVED	BAE. HYENG SUB	TANJUNG JATI B EXPANSION 2 X 660 MW POWER PLANT	PROJECT
CHECKED	MOKHAMMAD FAUJI	TITLE:	
DRAWN	TEDDY B. KENCONO	SOOTBLOWER	
SCALE		PACKING ASSEMBLY	
DATE	OCTOBER 5, 2020	DRAWING NO.	KPIJB - 220815 - 1 - R0
		Rev.	0



	PT. KOMIPO PEMBANGKITAN JAWA BALI PLTU TANJUNG JATI B UNIT 3&4	Doc. Ref	: KPJB-0951-02
		Form No.	: KPJB-0951-02-ZZ-FM-16
TERM OF REFERENCE		Design Div.	: Finance and Administration
		Revision No.	: 00

1. Background

The spare parts will be provided to equipment as follow:

Name : SOOTBLOWER & WALLDESLAGGER

Brand : -

2. Spare Part Data

2.1. System : SOOTBLOWING SYSTEM

2.2. Equipment : SOOTBLOWER & WALLDESLAGGER

2.3. Spare Part Group :

Overhaul

PM & PdM

Run to Failure

Strategic Parts

Strategic Equipment

2.4. Usage Plan : SPARE PARTS WILL BE INSTALLED AFTER DELIVERY & GOOD RECEIPT IN KPJB WARE HOUSE.

2.5. Description :

There're 22 items, we would like to request to purchase as spare part. The items are:

NO	Item ID	DESCRIPTION	QTY	UNIT	REMARK
1	218223	PLATE,SURFACE, CARRIAGE COVER PLATE GASKET, SQUARE, SYMETRICAL 6 HOLE R: 5MM L: 114MM & W: 101MM, OUT: 222x134MM, IN: 173X83MM, MATERIAL: PAPER, THICKNESS: 0.5MM (REF TO DWG NO: KPJB-AI- Y-0004)	50	PC	
2	218543	SHIM, BLUE, BEARING RETAINER (LANCE DRIVE SHAFT), MATERIAL: POLYETHYLENE, THICKNESS: 0.10 MM (REF TO DWG NO: KPJB-AI-Y- 0005)	50	PC	
3	215299	SHIM, TRANSPERENT, BEARING CARRIER, MATERIAL: POLYETHYLENE, THICKNESS: 0.20 MM (REF TO DWG NO: KPJB-AI-Y- 0009)	50	PC	
4	218544	SHIM, YELLOW, BEARING RETAINER (LANCE DRIVE SHAFT), MATERIAL: POLYETHYLENE, THICKNESS: 0.50 MM (REF TO DWG NO: KPJB-AI-Y-0007)	50	PC	
5	218229	SHIM, GEAR CASE SHIM, MATERIAL: PTFE, THICKNESS: 0.50 MM (REF TO DWG NO: KPJB-AI-Y- 0011)	55	PC	
6	100014	GASKET, SIZE: 88x105x0.8 MM, MATERIAL: SS304 (REF TO DWG NO: KPJB-AI-Y-0017)	60	PC	
7	218546	GASKET, CARRIAGE LANCE HUB COVER PLATE GASKET, MATERIAL: PAPER, THICKNESS: 0.46 MM (REF TO DWG NO: KPJB-AI-Y-0014)	50	PC	

	PT. KOMIPO PEMBANGKITAN JAWA BALI PLTU TANJUNG JATI B UNIT 3&4	Doc. Ref	: KPJB-0951-02
		Form No.	: KPJB-0951-02-ZZ-FM-16
TERM OF REFERENCE		Design Div.	: Finance and Administration
		Revision No.	: 00

NO	Item ID	DESCRIPTION	QTY	UNIT	REMARK
8	218547	GASKET, CARRIAGE BEARING RETAINER GASKET, MATERIAL: PAPER, THICKNESS: 0.50 MM (REF TO DWG NO: KPJB-AI-Y-0013)	290	PC	
9	218541	SHIM, BLUE, BEARING CARRIER, MATERIAL: POLYETHYLENE, THICKNESS: 0.10 MM (REF TO DWG NO: KPJB-AI-Y-0008)	50	PC	
10	218222	SHIM, TRANSPERENT, BEARING RETAINER (LANCE DRIVE SHAFT), MATERIAL: POLYETHYLENE, THICKNESS: 0.20 MM (REF TO DWG NO: KPJB-AI-Y-0006)	50	PC	
11	218542	SHIM, YELLOW, BEARING CARRIER, MATERIAL: POLYETHYLENE, THICKNESS: 0.50 MM (REF TO DWG NO: KPJB-AI-Y-0010)	50	PC	
12	221155	SHIM, BEARING RETAINER (WORM SHAFT), THICKNESS: 0.20 MM, REF TO DWG NO: KPJB-AI-Y-0020	50	PC	
13	221156	SHIM, BEARING RETAINER (WORM SHAFT), MATERIAL: PTFE, THICKNESS: 0.10 MM (REF TO DWG NO: KPJB-AI-Y-0019)	50	PC	
14	221157	SHIM, BEARING RETAINER (WORM SHAFT), MATERIAL: PTFE, THICKNESS: 0.50 MM (REF TO DWG NO: KPJB-AI-Y-0021)	50	PC	
15	217295	LUBRICATING OIL,GEAR, GEAR, OIL LEVELER (IK-545/IK-525) (REF TO DWG NO: KPJB-AI-Y-0015)	50	PC	
16	217294	WASHER,LOCK, BEARING LOCK WASHER, (IK-545/IK-525), MATERIAL: A-36 (REF TO DWG NO: KPJB-AI-Y-0016)	50	PC	
17	219996	GASKET, HOUSING GASKET (CHANGE GEAR), MATERIAL: PAPER (REF TO DWG NO: KPJB-AI-Y-0012)	50	PC	
18	220002	PACKING ASSEMBLY, PACKING, VALVE, VALVE STEM PACKING, 600 SERIES, IK-525/545, MATERIAL: FLEXIBLE GRAPHITE (REF TO DWG NO: KPJB-AI-Y-0018)	50	PC	
19	218227	SHIM, IR3D/Z, MATERIAL: POLYETHYLENE, THICKNESS: 0.4 MM (REF TO DWG NO: KPJB-AI-Y-0022)	55	PC	
20	206562	PIN, DRIVE PIN, IR3D/Z, OD: 18.5 MM, MATERIAL: 1Cr18Ni9Ti (REF TO DWG NO: KPJB-AI-Y-0023)	150	EA	
21	220004	PACKING ASSEMBLY, PACKING, VALVE, VALVE STEM PACKING, 600 SERIES, IR3D/Z, MATERIAL: FLEXIBLE GRAPHITE (REF TO DWG NO: KPJB-AI-Y-0024)	55	PC	

 PT. KOMIPO PEMBANGKITAN JAWA BALI PLTU TANJUNG JATI B UNIT 3&4	Doc. Ref	: KPJB-0951-02
	Form No.	: KPJB-0951-02-ZZ-FM-16
TERM OF REFERENCE	Design Div.	: Finance and Administration
	Revision No.	: 00

NO	Item ID	DESCRIPTION	QTY	UNIT	REMARK
22	220864	GASKET, GASKET SPIRAL WOUND, SEALING ELEMENT (GRAPHITE, 98x120x5MM), OUTER RING (A105 GRADE B, 120X133X3MM) ASME B16.20 (REF TO DWG NO: KPJB-AI-Y-0025)	110	PC	

3. CSMS RISK Level:

- 1. Low
- 2. Moderate
- 3. High
- 4. Very High
- 5. Extreme

4. Bidder Qualification

4.1. -

5. Delivery of material and/or services

5.1. All materials should on stock in KPJB's Warehouse, PLTU Tanjung Jati B Unit 3&4, Jepara, Central Java on **1 April 2026**.

6. Requirement of Documents

Within delivery the materials, supplier should submit documents as follow:

- 6.1. Copy Mill Certificate.
- 6.2. Surat Asal Usul
- 6.3. Warranty letter for 1 year from Supplier.

7. Technical Specification

- 7.1. All of technical specification (material, dimension and etc) should be comply to determined specification, should be new 100%, no defect, match and can be used properly, following attached drawing.
- 7.2. In the case PT KPJB decline the delivered material, supplier should replace the material. If supplier can't replace it, they will be penalized in accordance to General Term & Condition (GTC) of the PO.

8. Acceptance Criteria

- 8.1. Delivery time is complied.
- 8.2. All delivered materials are accordance to PO requirement, specification and condition of the TOR.
- 8.3. All of required document are fulfilled.

9. Standard of Quality

Quality of the material and/or services should comply with standard, code, manufacturer specification and user's requirement. *(or determined by user)*.

10. Warranty

Generally if there isn't mentioned at other clause, supplier should warrant the material for 1 year after material being receiving by PT. KPJB.

11. Drawing

Can be seen in the attachment

12. Others

12.1. Aanwijzing process is required.

	PT. KOMIPO PEMBANGKITAN JAWA BALI PLTU TANJUNG JATI B UNIT 3&4	Doc. Ref	: KPJB-0951-02
		Form No.	: KPJB-0951-02-ZZ-FM-16
TERM OF REFERENCE		Design Div.	: Finance and Administration
		Revision No.	: 00

NO	Item ID	DESCRIPTION	QTY	UNIT	REMARK
22	220864	GASKET, GASKET SPIRAL WOUND, SEALING ELEMENT (GRAPHITE, 98x120x5MM), OUTER RING (A105 GRADE B, 120X133X3MM) ASME B16.20 (REF TO DWG NO: KPJB-AI-Y-0025)	110	PC	

3. CSMS RISK Level:

- 1. Low
- 2. Moderate
- 3. High
- 4. Very High
- 5. Extreme

4. Bidder Qualification

4.1. -

5. Delivery of material and/or services

5.1. All materials should on stock in KPJB's Warehouse, PLTU Tanjung Jati B Unit 3&4, Jepara, Central Java on **1 April 2026**.

6. Requirement of Documents

Within delivery the materials, supplier should submit documents as follow:

- 6.1. Copy Mill Certificate. ✓
- 6.2. Surat Asal Usul ✓
- ~~6.3. COM (Certificate Of Manufacture) issued by manufacturer.~~
- 6.4. Warranty letter for 1 year from Supplier. —

Independent Laboratory Certificate.

7. Technical Specification

- 7.1. All of technical specification (material, dimension and etc) should be comply to determined specification, should be new 100%, no defect, match and can be used properly, following attached drawing.
- 7.2. In the case PT KPJB decline the delivered material, supplier should replace the material. If supplier can't replace it, they will be penalized in accordance to General Term & Condition (GTC) of the PO.

8. Acceptance Criteria

- 8.1. Delivery time is complied.
- 8.2. All delivered materials are accordance to PO requirement, specification and condition of the TOR.
- 8.3. All of required document are fulfilled.

9. Standard of Quality

Quality of the material and/or services should comply with standard, code, manufacturer specification and user's requirement. (or determined by user).

10. Warranty

Generally if there isn't mentioned at other clause, supplier should warrant the material for 1 year after material being receiving by PT. KPJB.

11. Drawing

Can be seen in the attachment

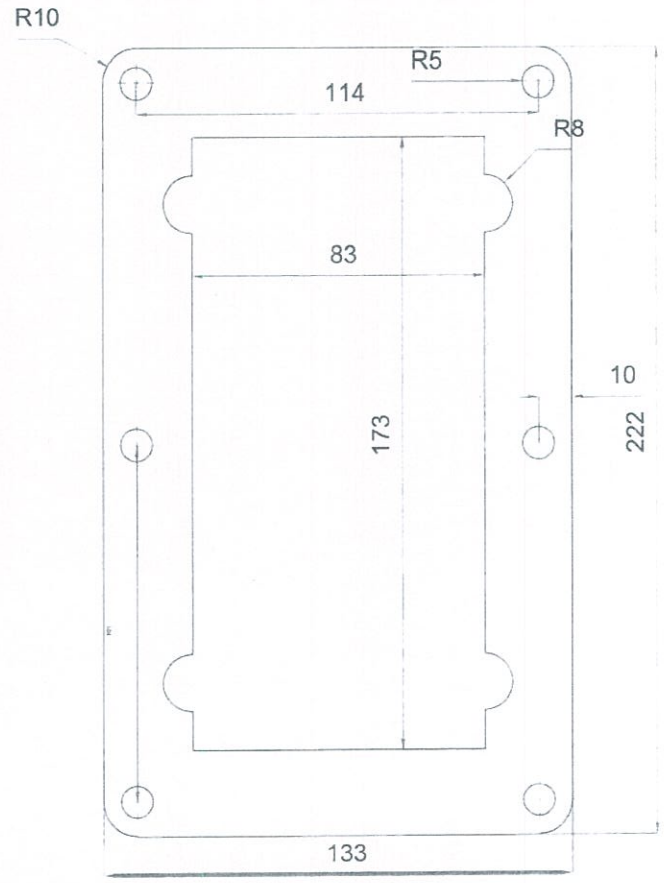
12. Others

12.1. Aanwijzing process is required.

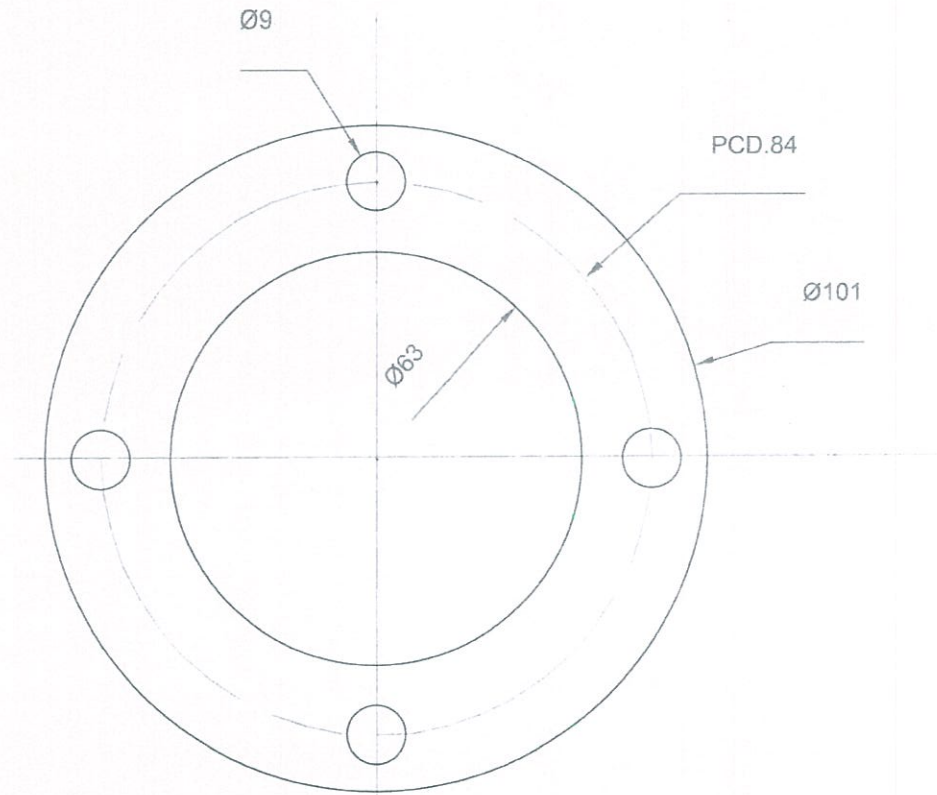
	PT. KOMIPO PEMBANGKITAN JAWA BALI PLTU TANJUNG JATI B UNIT 3&4	Doc. Ref	: KPJB-0951-02
		Form No.	: KPJB-0951-02-ZZ-FM-16
	TERM OF REFERENCE	Design Div.	: Finance and Administration
		Revision No.	: 00

Prepared by	Checked by	Approved by
		
<u>Abdillah Firdaus</u>	<u>Hermawan</u>	<u>Lim, Hyung Chul</u>
Date : 19-August-2025	Date : 19-August-2025	Date : 19-August-2025

218223

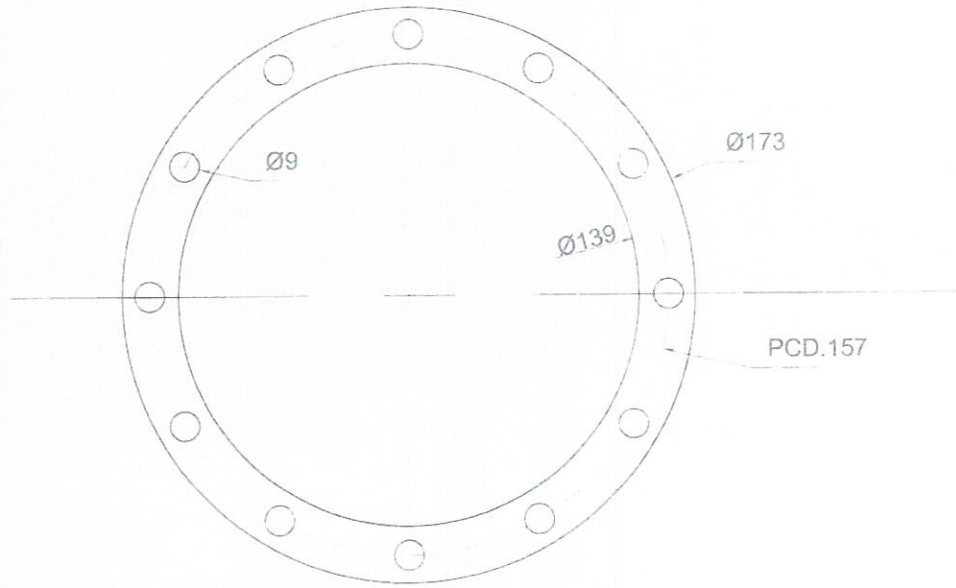





PT. KOMIPO PEMBANGKITAN JAWA BALI		DATE : JULY 16, 2025		SCALE : 1 : 1	
TANJUNG JATI B CFPP UNIT 3&4 2X660 MW		PT. KOMIPO PEMBANGKITAN JAWA BALI			PT. PLN
		DESIGNED	CHECKED	APPROVED	APPROVED
SOOTBLOWER GASKET COVER PLATE, MATERIAL: PAPER THICKNESS: 0,5 MM					
DRAWING NO.	KPJB-AI-Y-0004	REV	0		
REF. DRAWING		DRAFTER	LEADER	MANAGER	PLN



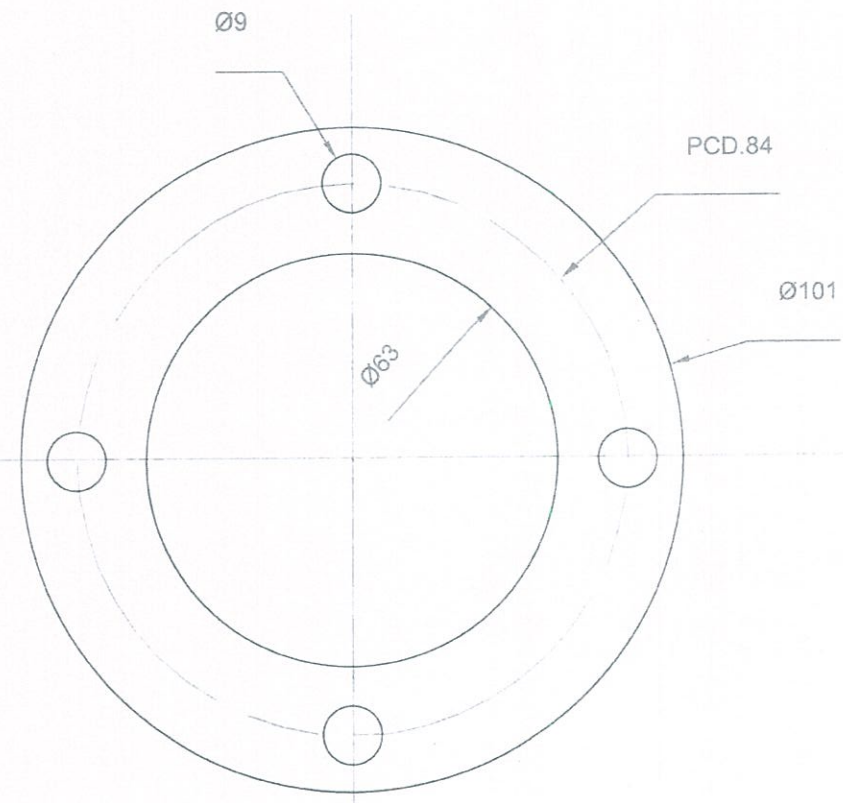
PT. KOMIPO PEMBANGKITAN JAWA BALI		DATE : JULY 16, 2025		SCALE : 1 : 1	
TANJUNG JATI B CFPP UNIT 3&4 2X660 MW		PT. KOMIPO PEMBANGKITAN JAWA BALI			PT. PLN
		DESIGNED	CHECKED	APPROVED	APPROVED
SHIM, BLUE, BEARING RETAINER (LANCE DRIVE SHAFT), MATERIAL: POLYETHYLENE, THICKNESS: 0.10 MM					
DRAWING NO.	KPJB-AI-Y-0005	REV	0		
REF. DRAWING		DRAFTER	LEADER	MANAGER	PLN

215-233



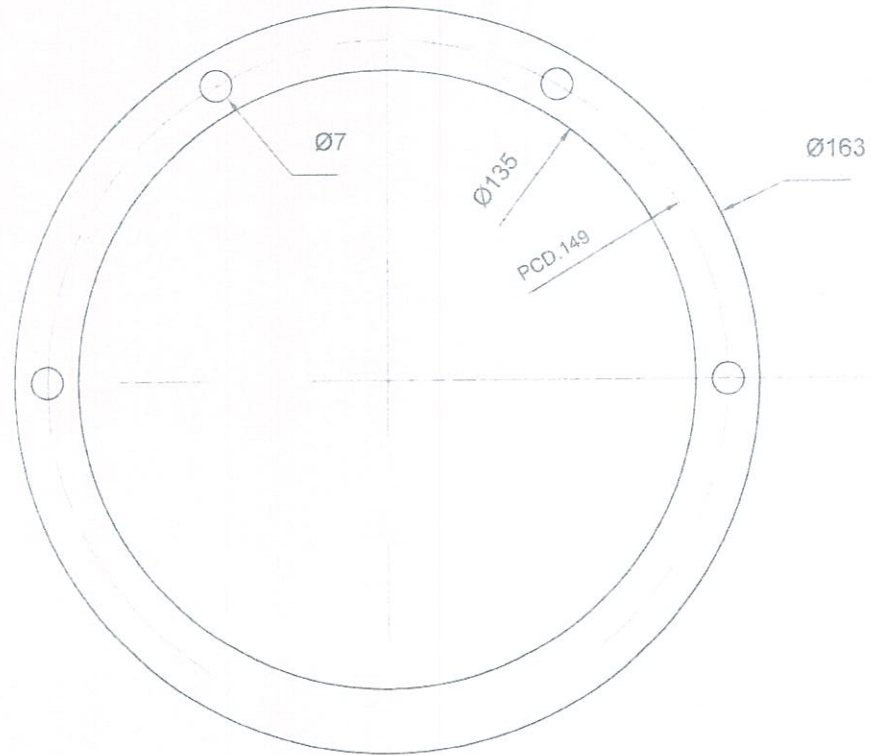
PT. KOMIPO PEMBANGKITAN JAWA BALI		DATE : JULY 16, 2025	SCALE : 1 : 1		
TANJUNG JATI B CFPP UNIT 3&4 2X660 MW		PT. KOMIPO PEMBANGKITAN JAWA BALI		PT. PLN	
		DESIGNED	CHECKED	APPROVED	APPROVED
SHIM, TRANSPERENT, BEARING CARRIER (LANCE DRIVE SHAFT), MATERIAL: POLYETHYLENE, THICKNESS: 0.20 MM					
DRAWING NO.	KPJB-AI-Y-0009	REV	0		
REF. DRAWING		DRAFTER	LEADER	MANAGER	PLN




218544

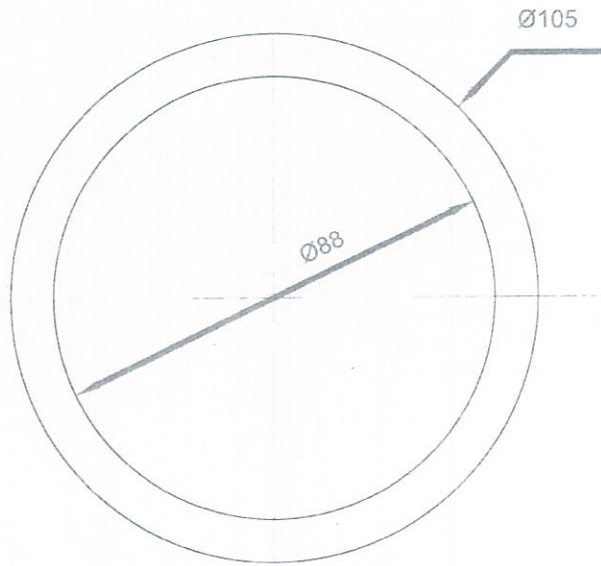


PT. KOMIPO PEMBANGKITAN JAWA BALI		DATE : JULY 16, 2025		SCALE : 1 : 1	
TANJUNG JATI B CFPP UNIT 3&4 2X660 MW		PT. KOMIPO PEMBANGKITAN JAWA BALI			PT. PLN
		DESIGNED	CHECKED	APPROVED	APPROVED
SHIM, YELLOW, BEARING RETAINER (LANCE DRIVE SHAFT), MATERIAL: POLYETHYLENE, THICKNESS: 0.50 MM					
DRAWING NO.	KPJB-AI-Y-0007	REV	0		
REF. DRAWING		DRAFTER	LEADER	MANAGER	PLN

218229

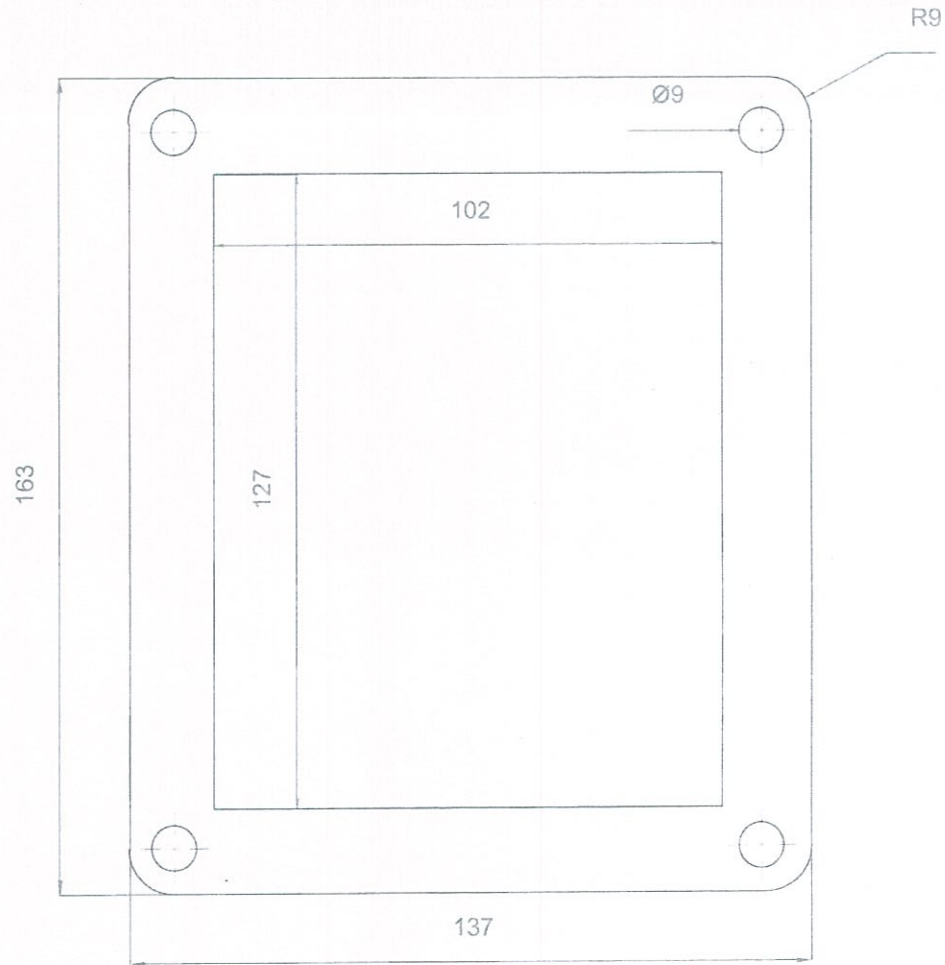


PT. KOMIPO PEMBANGKITAN JAWA BALI		DATE : JULY 16, 2025		SCALE : 1 : 1	
TANJUNG JATI B CFPP UNIT 3&4 2X660 MW		PT. KOMIPO PEMBANGKITAN JAWA BALI			PT. PLN
		DESIGNED	CHECKED	APPROVED	APPROVED
SHIM, GEAR CASE SHIM, MATERIAL: PTFE, THICKNESS: 0,5 MM					
DRAWING NO.	KPJB-AI-Y-0011	REV	0		
REF. DRAWING		DRAFTER	LEADER	MANAGER	PLN



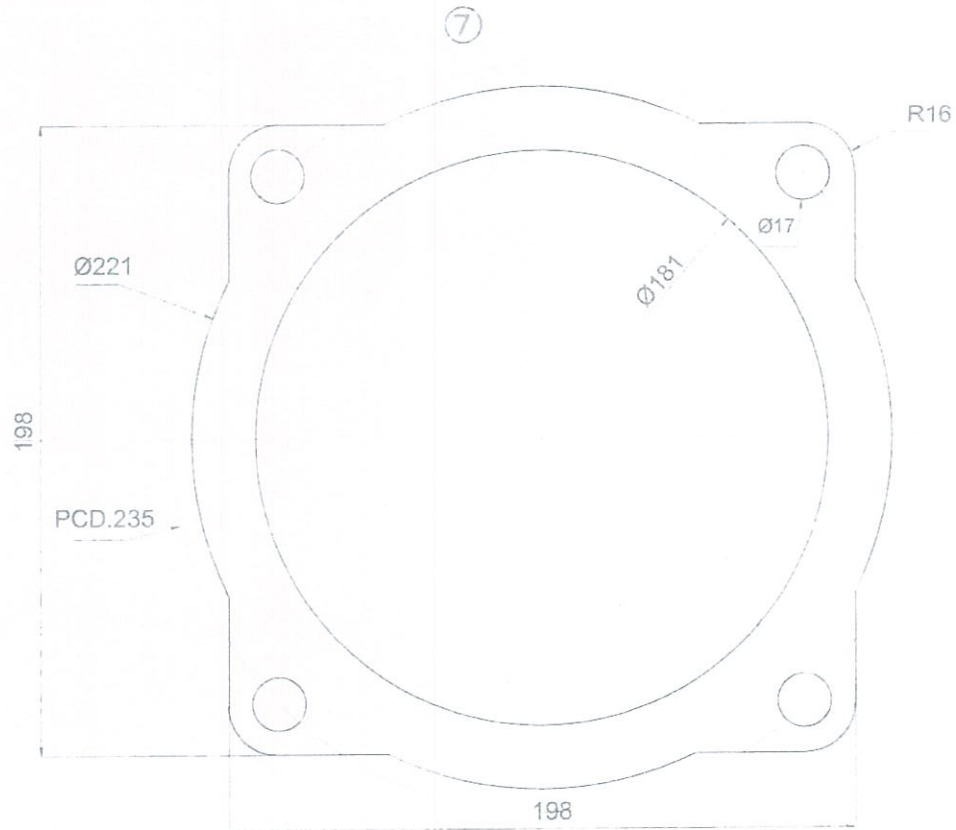
PT. KOMIPO PEMBANGKITAN JAWA BALI		DATE : JULY 16, 2025	SCALE : 1 : 1		
TANJUNG JATI B CFPP UNIT 3&4 2X660 MW		PT. KOMIPO PEMBANGKITAN JAWA BALI			
		DESIGNED	CHECKED	APPROVED	PT. PLN APPROVED
LANCE HUB GASKET, MATERIAL: SS 304, THICKNESS: 0,8 MM					
DRAWING NO.	KPIB-AI-Y-0017	REV	0		
REF. DRAWING		DRAFTER	LEADER	MANAGER	PLN

210396



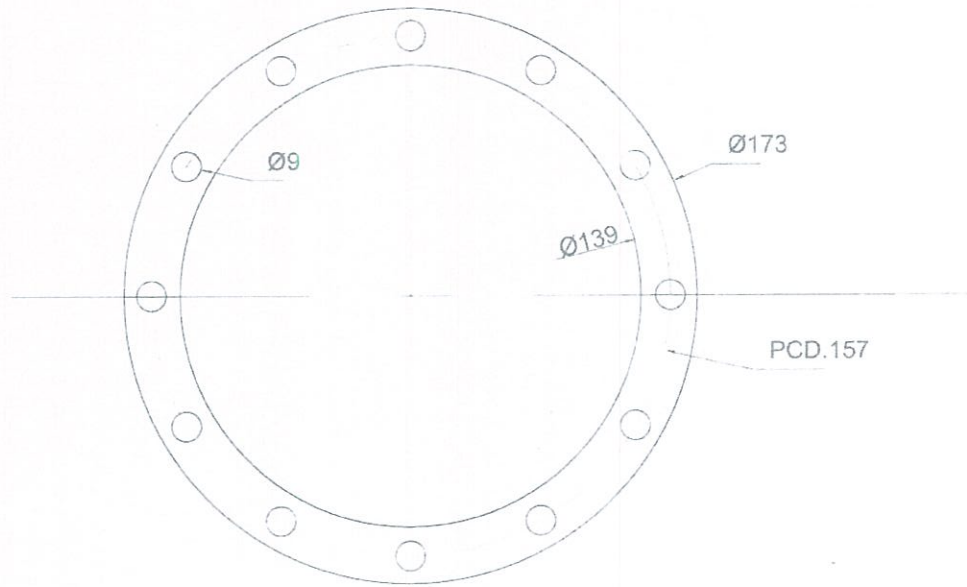
PT. KOMIPO PEMBANGKITAN JAWA BALI		DATE : JULY 16, 2025		SCALE : 1 : 1	
TANJUNG JATI B CFPP UNIT 3&4 2X660 MW		PT. KOMIPO PEMBANGKITAN JAWA BALI			PT. PLN
		DESIGNED	CHECKED	APPROVED	APPROVED
GASKET, CARRIAGE LANCE HUB COVER PLATE, MATERIAL: PAPER, THICKNESS: 0,46 MM					
DRAWING NO.	KPJB-AI-Y-0014	REV	0		
REF. DRAWING		DRAFTER	LEADER	MANAGER	PLN

218547



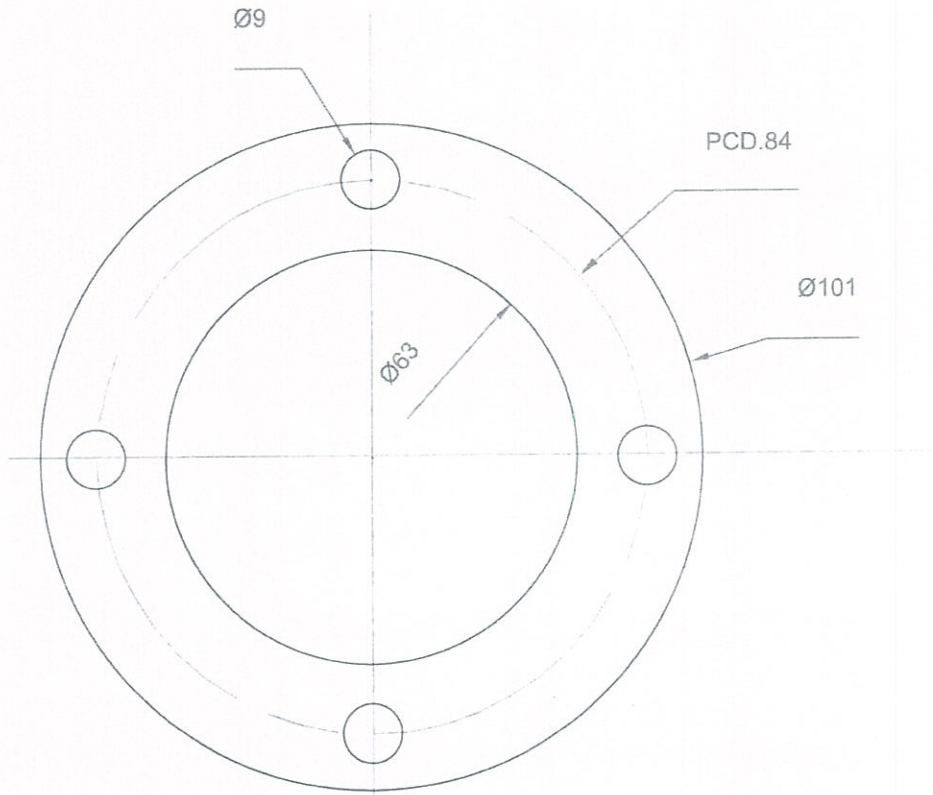
PT. KOMIPO PEMBANGKITAN JAWA BALI		DATE : JULY 16, 2025		SCALE : 1 : 1	
TANJUNG JATI B CFPP UNIT 3&4 2X660 MW		PT. KOMIPO PEMBANGKITAN JAWA BALI			PT. PLN
		DESIGNED	CHECKED	APPROVED	APPROVED
GASKET, CARRIAGE BEARING RETAINER, MATERIAL: PAPER, THICKNESS: 0,5 MM					
DRAWING NO.	KPJB-AI-Y-0013	REV	0		
REF. DRAWING		DRAFTER	LEADER	MANAGER	PLN

218541

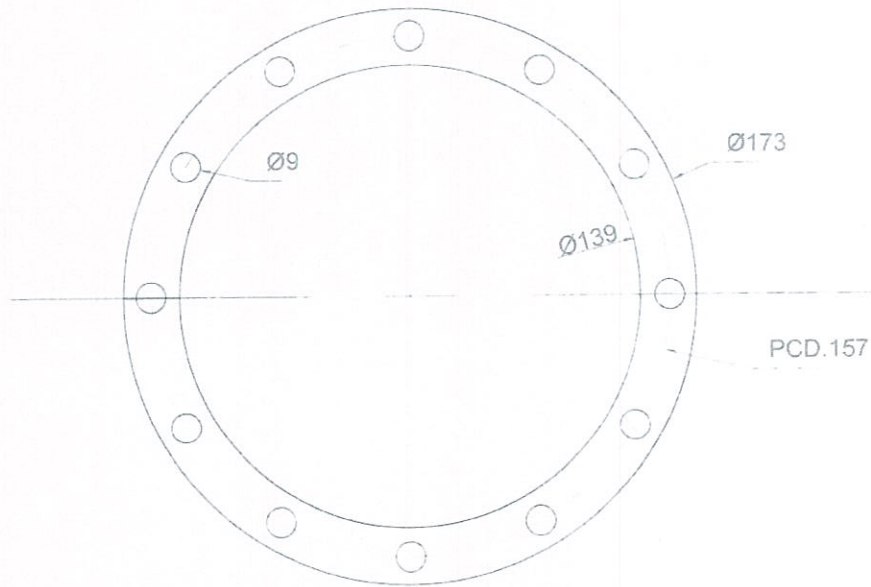


PT. KOMIPO PEMBANGKITAN JAWA BALI		DATE : JULY 16, 2025		SCALE : 1 : 1	
TANJUNG JATI B CFPP UNIT 3&4 2X660 MW		PT. KOMIPO PEMBANGKITAN JAWA BALI		PT. PLN	
		DESIGNED	CHECKED	APPROVED	APPROVED
SHIM, BLUE, BEARING CARRIER (LANCE DRIVE SHAFT), MATERIAL: POLYETHYLENE, THICKNESS: 0.10 MM					
DRAWING NO	KPIB-AI-Y-0008	REV	0		
REF. DRAWING		DRAFTER	LEADER	MANAGER	PLN

218222

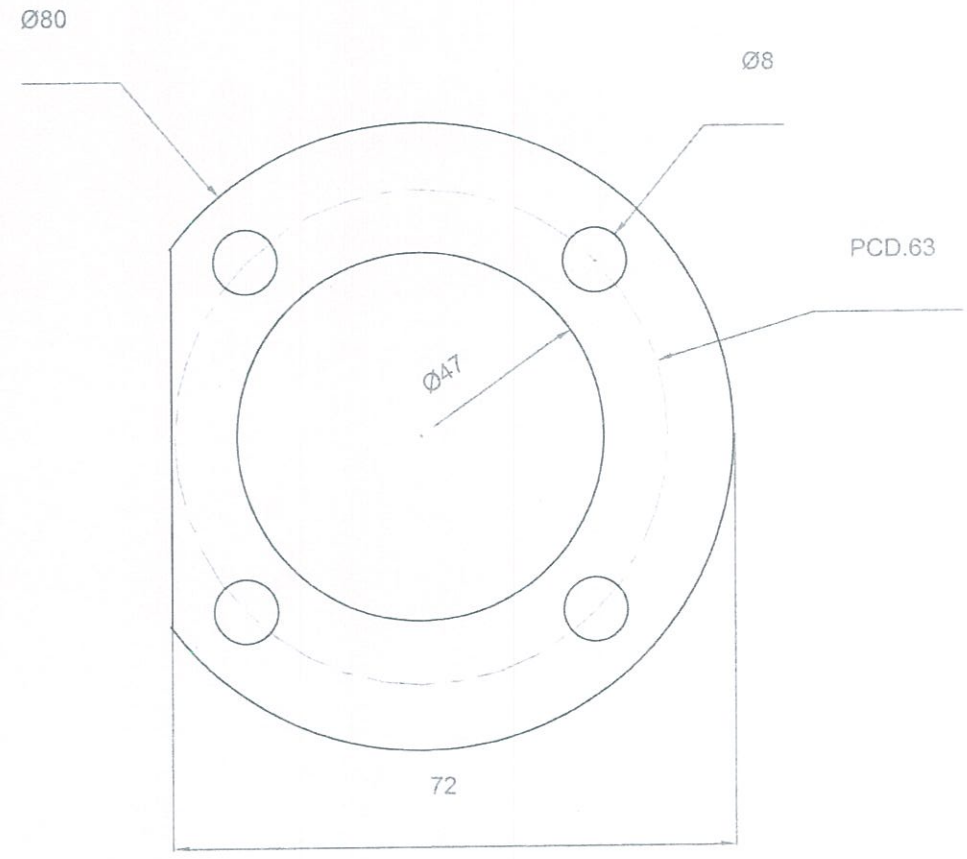


PT. KOMIPO PEMBANGKITAN JAWA BALI		DATE : JULY 16, 2025		SCALE : 1 : 1	
TANJUNG JATI B CFPP UNIT 3&4 2X660 MW		PT. KOMIPO PEMBANGKITAN JAWA BALI		PT. PLN	
		DESIGNED	CHECKED	APPROVED	APPROVED
SHIM, TRANSPERENT, BEARING RETAINER (LANCE DRIVE SHAFT), MATERIAL: POLYETHYLENE, THICKNESS: 0.20 MM					
DRAWING NO.	KPJB-AI-Y-0006	REV	0		
REF. DRAWING		DRAFTER	LEADER	MANAGER	PLN

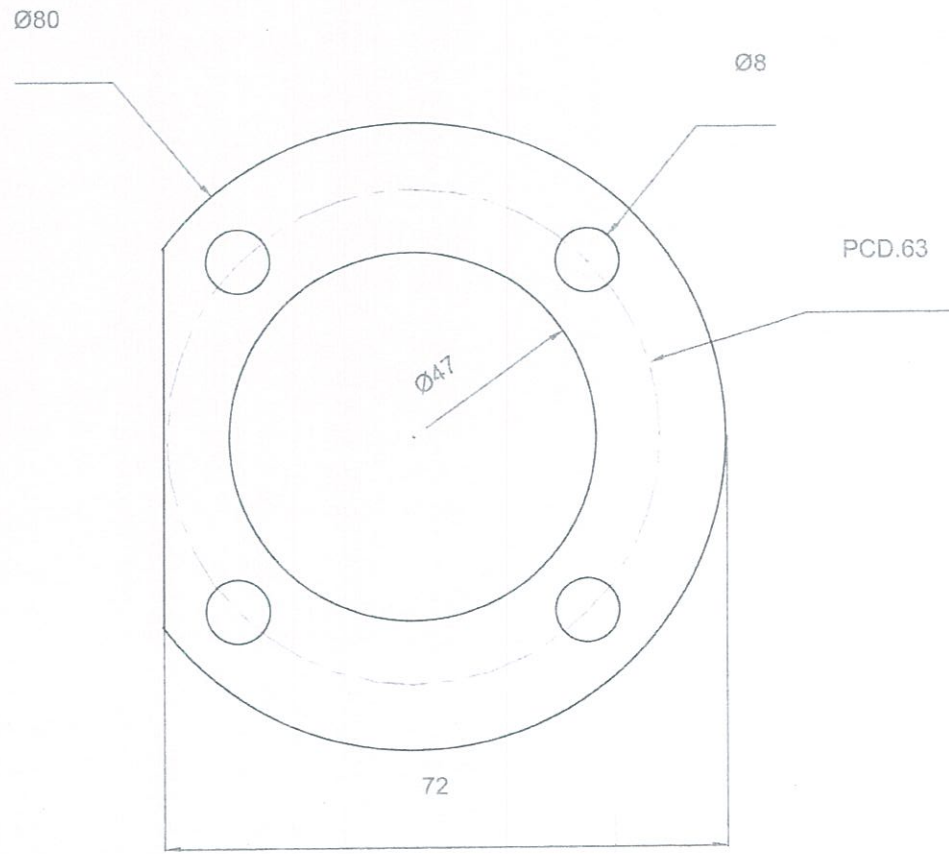


PT. KOMIPO PEMBANGKITAN JAWA BALI		DATE : JULY 16, 2025	SCALE : 1 : 1	
TANJUNG JATI B CFPP UNIT 3&4 2X660 MW		PT. KOMIPO PEMBANGKITAN JAWA BALI		PT. PLN
		DESIGNED	CHECKED	APPROVED
SHIM, YELLOW, BEARING CARRIER (LANCE DRIVE SHAFT), MATERIAL: POLYETHYLENE, THICKNESS: 0.50 MM				
DRAWING NO.	KPJB-AI-Y-0010	REV	0	
REF. DRAWING		DRAFTER	LEADER	MANAGER
				PLN

221156



PT. KOMIPO PEMBANGKITAN JAWA BALI		DATE : JULY 16, 2025		SCALE : 1 : 1			
TANJUNG JATI B CFPP UNIT 3&4 2X660 MW		PT. KOMIPO PEMBANGKITAN JAWA BALI			PT. PLN		
		DESIGNED	CHECKED	APPROVED	APPROVED		
SHIM, BEARING RETAINER (WORM SHAFT), MATERIAL: PTFE, THICKNESS: 0,10 MM							
DRAWING NO.	KPJB-AI-Y-0019	REV	0	DRAFTER	LEADER	MANAGER	PLN
REF. DRAWING							



PT. KOMIPO PEMBANGKITAN JAWA BALI		DATE : JULY 16, 2025		SCALE : 1 : 1	
TANJUNG JATI B CFPP UNIT 3&4 2X660 MW		PT. KOMIPO PEMBANGKITAN JAWA BALI			PT. PLN
		DESIGNED	CHECKED	APPROVED	APPROVED
SHIM, BEARING RETAINER (WORM SHAFT), MATERIAL: PTFE, THICKNESS: 0,20 MM					
DRAWING NO.	KPJB-AI-Y-0020	REV	0		
REF. DRAWING		DRAFTER	LEADER	MANAGER	PLN

221121

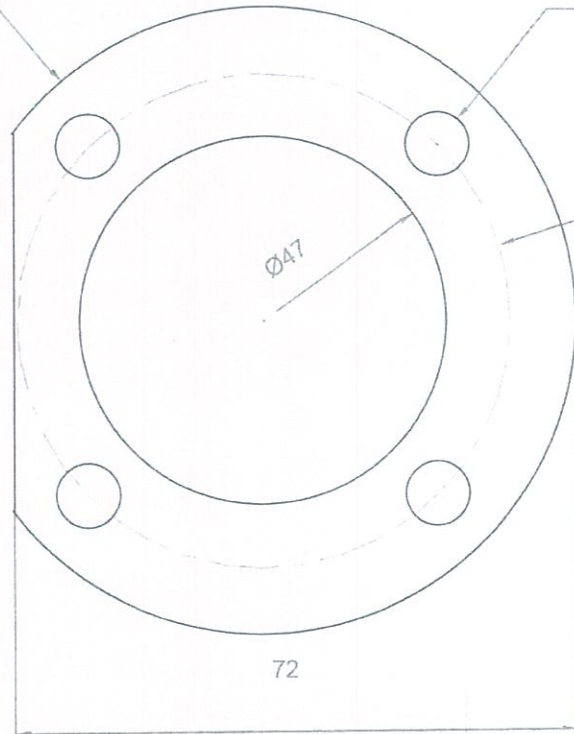
Ø80

Ø8

PCD.63

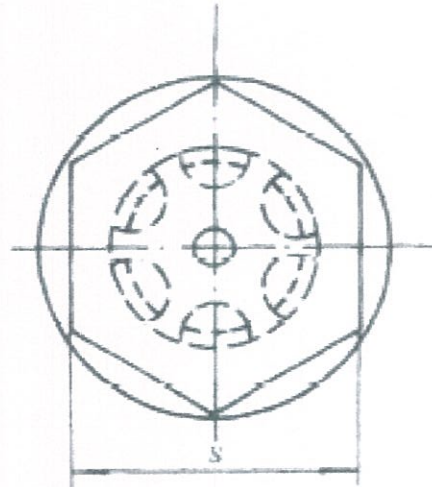
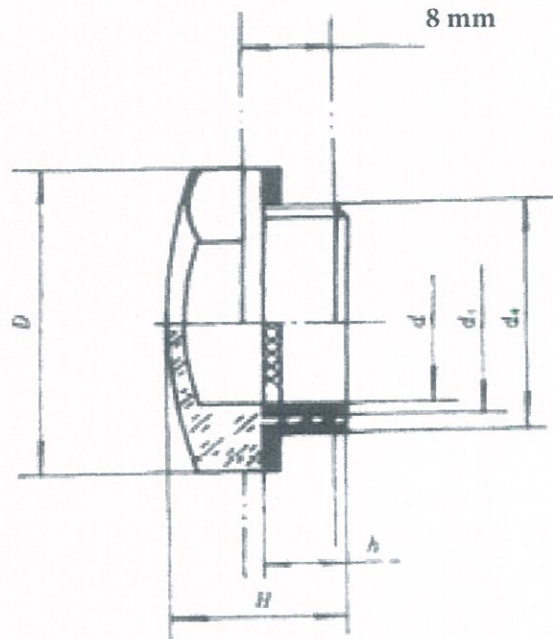
Ø47

72



PT. KOMIPO PEMBANGKITAN JAWA BALI		DATE : JULY 16, 2025		SCALE : 1 : 1	
TANJUNG JATI B CFPP UNIT 3&4 2X660 MW		PT. KOMIPO PEMBANGKITAN JAWA BALI			PT. PLN
		DESIGNED	CHECKED	APPROVED	APPROVED
SHIM, BEARING RETAINER (WORM SHAFT), MATERIAL: PTFE, THICKNESS: 0,50 MM					
DRAWING NO.	KPIB-AI-Y-0021	REV	0		
REF. DRAWING		DRAFTER	LEADER	MANAGER	PLN

217295



$d=20$

$d_0=M27X1.5$

$D=36$

$d_1=22$

$S=12$

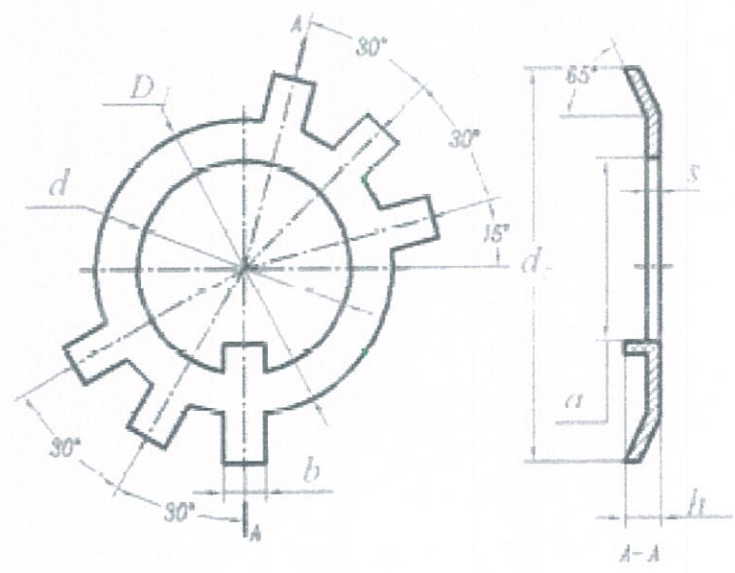
$H=18$

$H_1=30$

$h=10$

PT. KOMIPO PEMBANGKITAN JAWA BALI		DATE : JULY 16, 2025		SCALE : 1 : 1	
TANJUNG JATI B CFPP UNIT 3&4 2X660 MW		PT. KOMIPO PEMBANGKITAN JAWA BALI			PT. PLN
		DESIGNED	CHECKED	APPROVED	APPROVED
LUBRICATING OIL, GEAR, OIL LEVELER (IK-545/IK-525)					
DRAWING NO.	KPJB-AI-Y-0015	REV	0		
REF. DRAWING		DRAFTER	LEADER	MANAGER	PLN

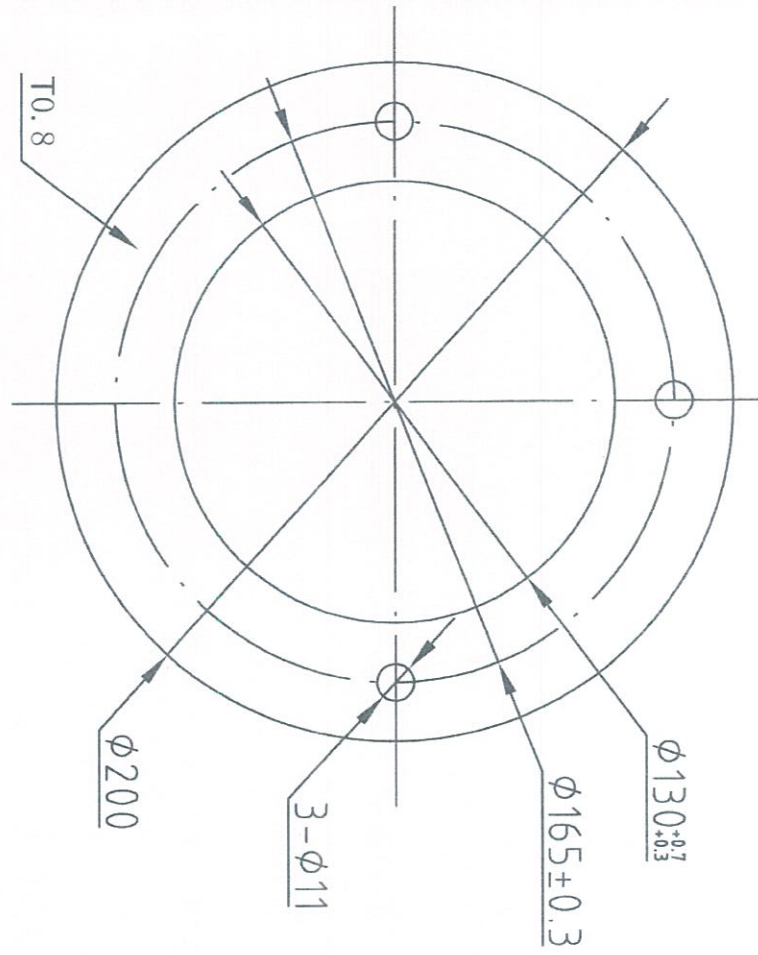
217294



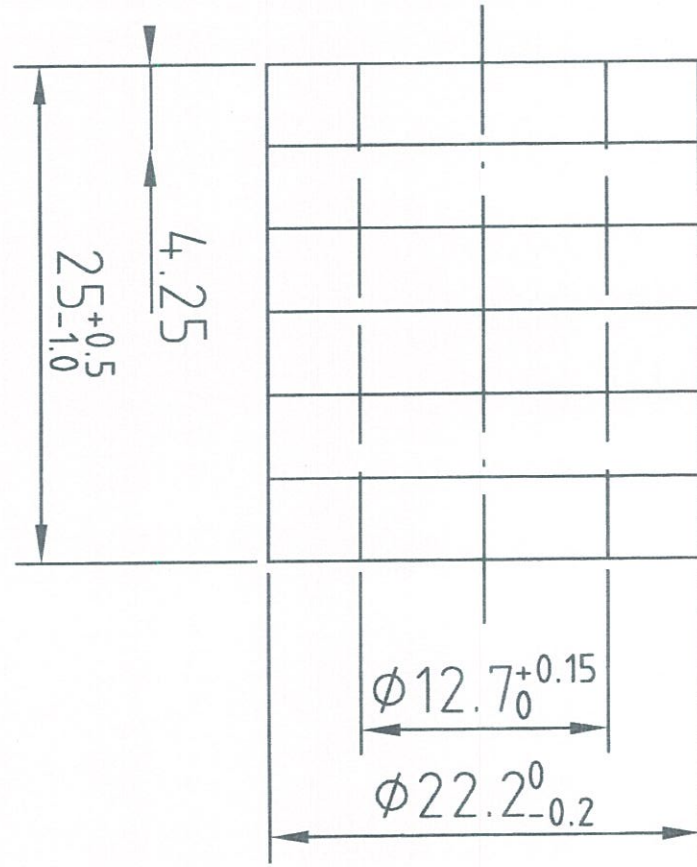
- d=24.5
- dc=45
- D1=34
- S=1
- h=4
- b=4.8
- a=21

PT. KOMIPO PEMBANGKITAN JAWA BALI		DATE : JULY 16, 2025	SCALE 1 : 1		
TANJUNG JATI B CFPP UNIT 3&4 2X660 MW		PT. KOMIPO PEMBANGKITAN JAWA BALI		PT. PLN	
		DESIGNED	CHECKED	APPROVED	APPROVED
WASHER, LOCK, BEARING LOCK WASHER (IK-545/IK-525), MATERIAL: A-36					
DRAWING NO.	KPJB-AI-Y-0016	REV	0		
REF. DRAWING		DRAFTER	LEADER	MANAGER	PLN

219996

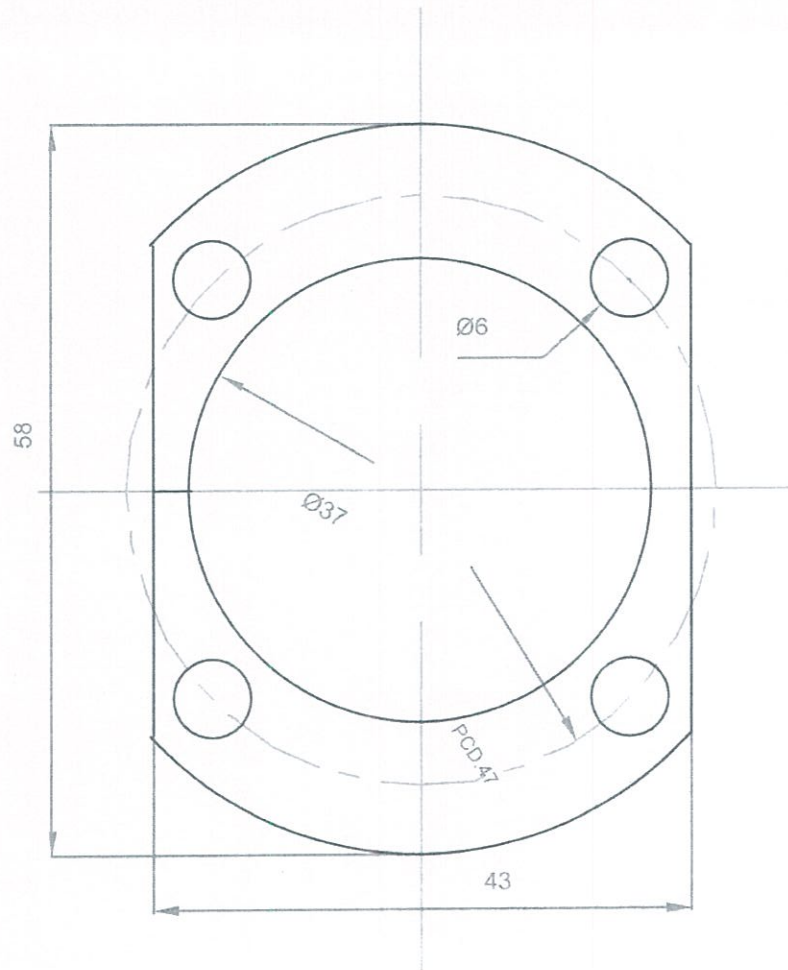


PT. KOMIPO PEMBANGKITAN JAWA BALI		DATE : JULY 16, 2025		SCALE 1 : 1	
TANJUNG JATI B CFPP UNIT 3&4 2X660 MW		PT. KOMIPO PEMBANGKITAN JAWA BALI			PT. PLN
		DESIGNED	CHECKED	APPROVED	APPROVED
GASKET, HOUSING (CHANGE GEAR), MATERIAL: PAPER					
		DRAWING NO. KPJB-A1-Y-0012	REV 0	DRAFTER	LEADER
REF. DRAWING					



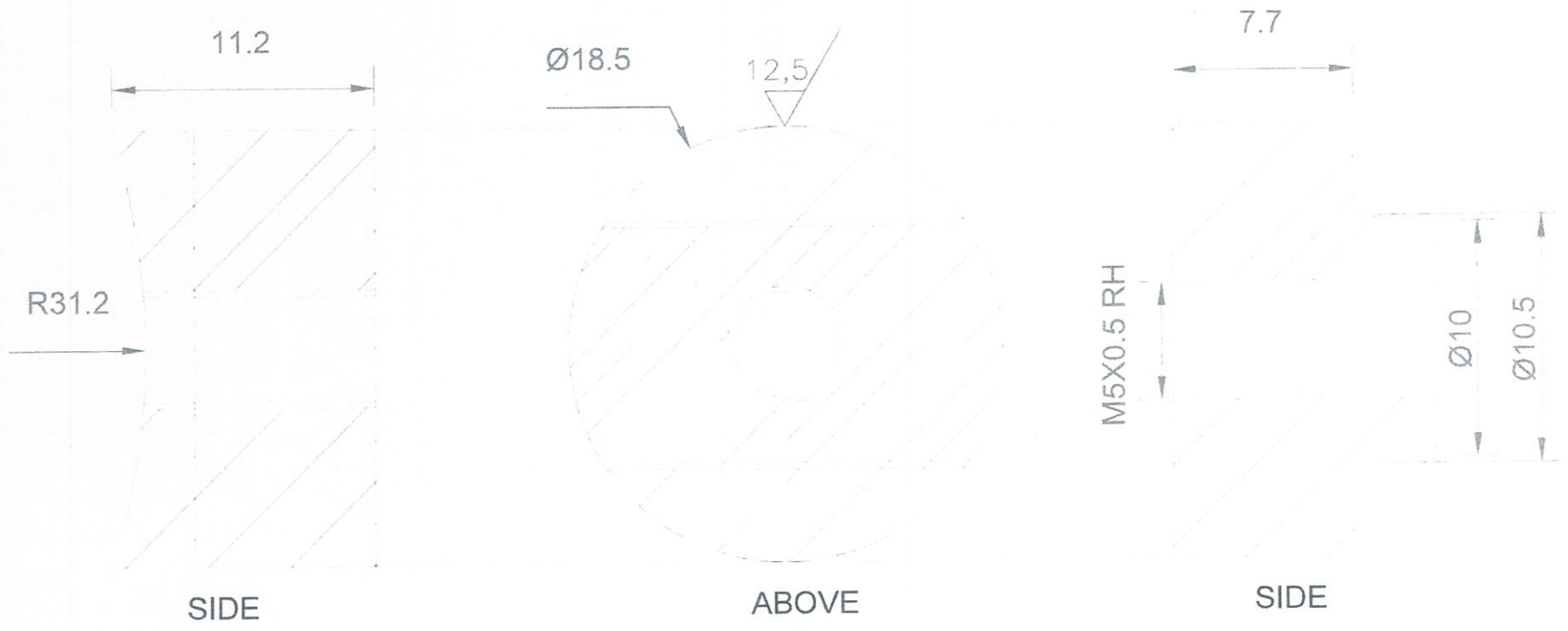
PT. KOMIPO PEMBANGKITAN JAWA BALI		DATE : JULY 16, 2025		SCALE : 1 : 1	
TANJUNG JATI B CFPP UNIT 3&4 2X660 MW		PT. KOMIPO PEMBANGKITAN JAWA BALI			PT. PLN
		DESIGNED	CHECKED	APPROVED	APPROVED
PACKING ASSEMBLY, PACKING, VALVE, VALVE STEM PACKING, 600 SERIES, IK-525/545, MATERIAL: FLEXIBLE GRAPHITE					
DRAWING NO.	KPJB-AI-Y-0018	REV	0		
REF. DRAWING		DRAFTER	LEADER	MANAGER	PLN

218227

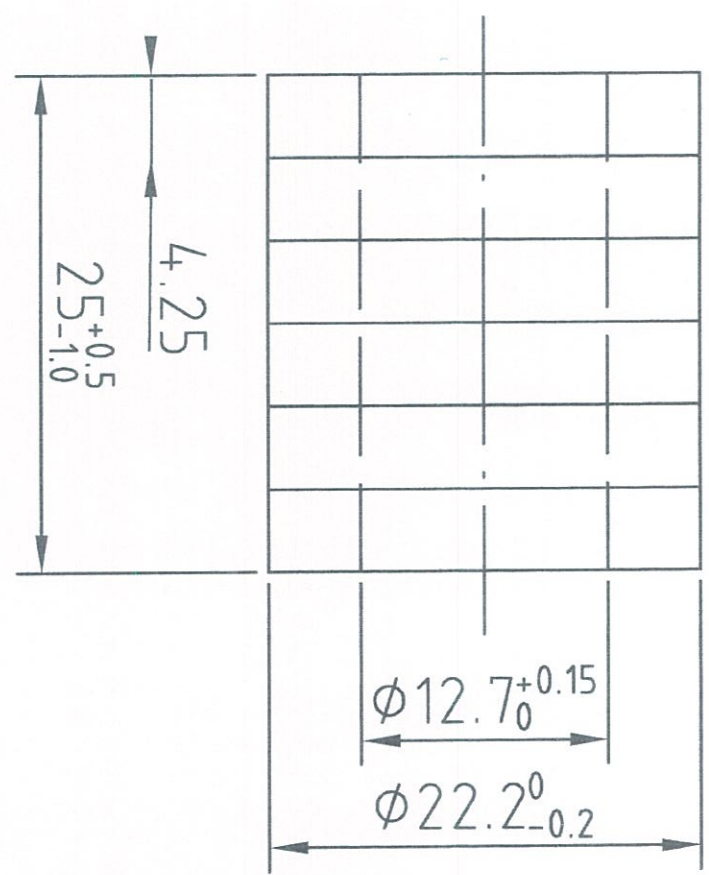


PT. KOMIPO PEMBANGKITAN JAWA BALI		DATE : JULY 16, 2025		SCALE : 1 : 1	
TANJUNG JATI B CFPP UNIT 3&4 2X660 MW		PT. KOMIPO PEMBANGKITAN JAWA BALI		PT. PLN	
		DESIGNED	CHECKED	APPROVED	APPROVED
SHIM, IR3D/Z, MATERIAL: POLYETHYLENE, THICKNESS: 0,40 MM					
DRAWING NO.	KPJB-AI-Y-0022	REV	0		
REF. DRAWING		DRAFTER	LEADER	MANAGER	PLN

206562

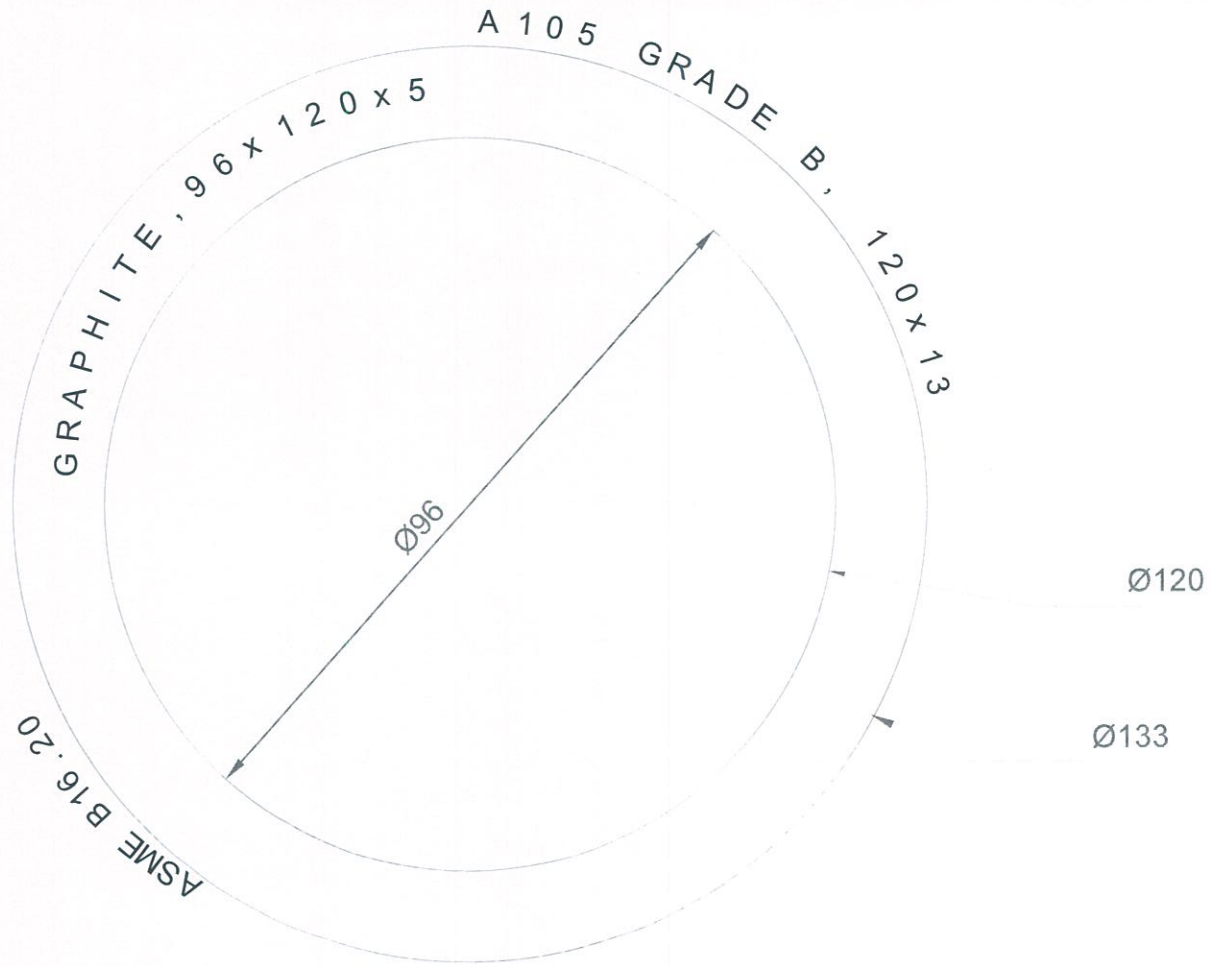


PT. KOMIPO PEMBANGKITAN JAWA BALI		DATE : JULY 16, 2025		SCALE : 1 : 1	
TANJUNG JATI B CFPP UNIT 3&4 2X660 MW		PT. KOMIPO PEMBANGKITAN JAWA BALI			PT. PLN
		DESIGNED	CHECKED	APPROVED	APPROVED
DRIVE PIN, IR3D/Z, MATERIAL: 1Cr18Ni9Ti					
DRAWING NO.	KPJB-AI-Y-0023	REV	0		
REF. DRAWING		DRAFTER	LEADER	MANAGER	PLN



PT. KOMIPO PEMBANGKITAN JAWA BALI		DATE : JULY 16, 2025	SCALE : 1 : 1		
TANJUNG JATI B CFPP UNIT 3&4 2X660 MW		PT. KOMIPO PEMBANGKITAN JAWA BALI		PT. PLN	
		DESIGNED	CHECKED	APPROVED	APPROVED
PACKING ASSEMBLY, PACKING, VALVE, VALVE STEM PACKING, 600 SERIES, IR3D/Z MATERIAL: FLEXIBLE GRAPHITE					
DRAWING NO.	KPJB-AI-Y-0024	REV	0		
REF. DRAWING		DRAFTER	LEADER	MANAGER	PLN

220864



PT. KOMIPO PEMBANGKITAN JAWA BALI		DATE : JULY 16, 2025	SCALE : 1 : 1		
TANJUNG JATI B CFPP UNIT 3&4 2X660 MW		PT. KOMIPO PEMBANGKITAN JAWA BALI		PT. PLN	
		DESIGNED	CHECKED	APPROVED	APPROVED
GASKET, GASKET SPIRAL WOUND, SEALING ELEMENT (GRAPHITE, 98x120x5MM), OUTER RING (A105 GRADE B, 120X133X3MM) ASME B16.20		<i>[Signature]</i>	<i>[Signature]</i>	<i>[Signature]</i>	
DRAWING NO.	KPJB-AI-Y-0025	REV	0		
REF. DRAWING		DRAFTER	LEADER	MANAGER	PLN